

SIMPLE SWITCHER® Regulators Take Over Automotive Applications

National Semiconductor
Application Note 1930
Ricardo Capetillo, Frederik Dostal
January 7, 2009



Power management applications, typically located on the front line of the automotive electronics system, can be subject to wide input operating voltage extremes resulting from load-dump and cold-cranking conditions. Careful selection of the power management electronics can provide added margin and protection to the automotive electronics system. The simplest design is provided by a power management switch-mode power supply, such as the LM2267x/80 family of SIMPLE SWITCHER® regulators, which integrates a power MOSFET and sustains a wide steady-state input voltage range.

Load Dump

Load dump occurs when the automobile battery is disconnected while the engine and the alternator are running. The resultant voltage transient may be as high as 120V, and 400 ms in duration. With such a severe voltage transient, this presents a challenge to the engineer designing the power management system. It is not economically practical to design a power supply solution that operates up to 120V only to accommodate load-dump line transients. Modern automobiles typically have a centralized load-dump protection scheme that limits the voltage during load-dump conditions to much lower voltages. Diode shunt devices such as transient voltage suppression diodes (TVS) may be used to clamp the maximum voltage a power supply will see at its input. Other protection circuits involving high-side MOSFETs, as described in Application Note AN-1533, also can be used to protect the application during load-dump situations. However, even with the use of these transient protection devices, the selected power management IC must provide an added margin of protection.

A typical input voltage waveform during a load-dump condition is shown in *Figure 1*.

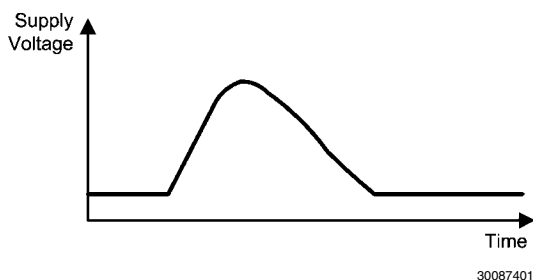


FIGURE 1. Typical Load-Dump Profile

Comparing different design solutions for reliability, simplicity, and cost often supports the selection of a power management

IC with a maximum input operating voltage of approximately 40V. The new LM2267x/80 SIMPLE SWITCHER family provides a maximum input operating voltage of 42V to allow additional protection headroom.

Cold Cranking

During the startup of a combustion engine, also known as cold crank, the battery supplies a large current to the electric starter motor. Under this condition, the battery voltage sags dramatically. *Figure 2* shows a typical cold-cranking profile. The initial voltage collapse to 'V low' is due to the initial peak current needed to start turning the combustion engine. Once the combustion engine is turning, the voltage of the battery plateaus to the 'V plateau' voltage level and finally, when the electric starter motor is disabled, the battery voltage rises to its charging voltage level.

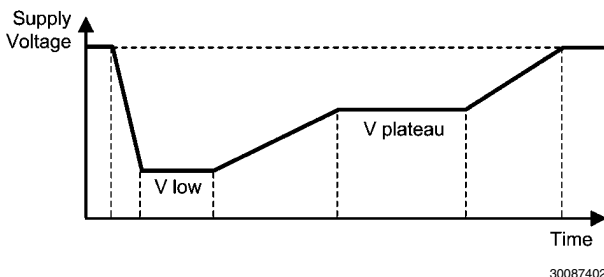


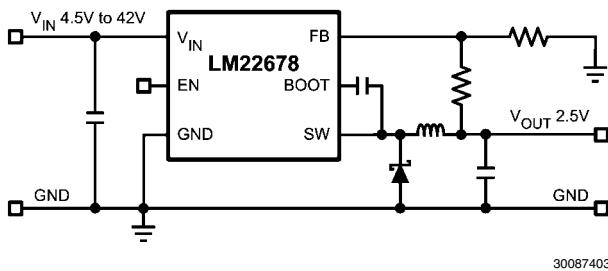
FIGURE 2. Typical Cold-Cranking Profile

It is becoming increasingly important for automotive subsystems to operate during engine cold-cranking conditions. To increase fuel economy, some new automobiles are being equipped with automated start-stop systems that shut down the combustion engine when the automobile is stopped at a traffic light or in a traffic jam. As the break pedal or the clutch is released, the electric starter motor cold cranks the battery to get the combustion engine operating. For safety and convenience, the power management system must sustain the input operating voltage levels, in such start-stop systems, to insure continuous operation of electronic components found in navigation systems, dashboard electronics, LED break lights, or headlights. This requires power management solutions capable of operation at very low minimum input operating voltages.

For systems where the 'V low' voltage level is 4.5V or above, the LM2267x SIMPLE SWITCHER family provides a good solution. See *Table 1* and *Figure 3* for a list of devices, features, and an example circuit of the new SIMPLE SWITCHER family.

TABLE 1. Series of New SIMPLE SWITCHER Regulators with Very Wide Input Voltage Range from 4.5V to 42V

Device	Current	RT/SYNC	Enable	Soft-Start	IADJ
LM22671	0.5A	X	X	X	
LM22674	0.5A		X		
LM22672	1A	X	X	X	
LM22675	1A		X		
LM22680	2A	X	X	X	
LM22670	3A	X	X		
LM22673	3A			X	X
LM22676	3A		X		
LM22677	5A	X	X		
LM22678	5A		X		
LM22679	5A			X	X

**FIGURE 3. Example Circuit with Very Wide Input Voltage Range and Low Component Count**

Wide Input Voltage Range Rules

Earlier generations of SIMPLE SWITCHER regulator families remain popular in automotive applications due to their ease of use, low solution component count, and wide input voltage range. The newest LM2267x/80 SIMPLE SWITCHER family meets and exceeds these requirements while adding further refined features such as a higher switching frequency, an even wider input operating voltage range, and improved WEBENCH® online simulation design support.

AECQ100 qualification for the LM2267x/80 is planned. Please contact National Semiconductor for more details.

Notes

For more National Semiconductor product information and proven design tools, visit the following Web sites at:

Products		Design Support	
Amplifiers	www.national.com/amplifiers	WEBENCH® Tools	www.national.com/webench
Audio	www.national.com/audio	App Notes	www.national.com/appnotes
Clock and Timing	www.national.com/timing	Reference Designs	www.national.com/refdesigns
Data Converters	www.national.com/adc	Samples	www.national.com/samples
Interface	www.national.com/interface	Eval Boards	www.national.com/evalboards
LVDS	www.national.com/lvds	Packaging	www.national.com/packaging
Power Management	www.national.com/power	Green Compliance	www.national.com/quality/green
Switching Regulators	www.national.com/switchers	Distributors	www.national.com/contacts
LDOs	www.national.com/ldo	Quality and Reliability	www.national.com/quality
LED Lighting	www.national.com/led	Feedback/Support	www.national.com/feedback
Voltage Reference	www.national.com/vref	Design Made Easy	www.national.com/easy
PowerWise® Solutions	www.national.com/powerwise	Solutions	www.national.com/solutions
Serial Digital Interface (SDI)	www.national.com/sdi	Mil/Aero	www.national.com/milaero
Temperature Sensors	www.national.com/tempsensors	Solar Magic®	www.national.com/solarmagic
Wireless (PLL/VCO)	www.national.com/wireless	Analog University®	www.national.com/AU

THE CONTENTS OF THIS DOCUMENT ARE PROVIDED IN CONNECTION WITH NATIONAL SEMICONDUCTOR CORPORATION ("NATIONAL") PRODUCTS. NATIONAL MAKES NO REPRESENTATIONS OR WARRANTIES WITH RESPECT TO THE ACCURACY OR COMPLETENESS OF THE CONTENTS OF THIS PUBLICATION AND RESERVES THE RIGHT TO MAKE CHANGES TO SPECIFICATIONS AND PRODUCT DESCRIPTIONS AT ANY TIME WITHOUT NOTICE. NO LICENSE, WHETHER EXPRESS, IMPLIED, ARISING BY ESTOPPEL OR OTHERWISE, TO ANY INTELLECTUAL PROPERTY RIGHTS IS GRANTED BY THIS DOCUMENT.

TESTING AND OTHER QUALITY CONTROLS ARE USED TO THE EXTENT NATIONAL DEEMS NECESSARY TO SUPPORT NATIONAL'S PRODUCT WARRANTY. EXCEPT WHERE MANDATED BY GOVERNMENT REQUIREMENTS, TESTING OF ALL PARAMETERS OF EACH PRODUCT IS NOT NECESSARILY PERFORMED. NATIONAL ASSUMES NO LIABILITY FOR APPLICATIONS ASSISTANCE OR BUYER PRODUCT DESIGN. BUYERS ARE RESPONSIBLE FOR THEIR PRODUCTS AND APPLICATIONS USING NATIONAL COMPONENTS. PRIOR TO USING OR DISTRIBUTING ANY PRODUCTS THAT INCLUDE NATIONAL COMPONENTS, BUYERS SHOULD PROVIDE ADEQUATE DESIGN, TESTING AND OPERATING SAFEGUARDS.

EXCEPT AS PROVIDED IN NATIONAL'S TERMS AND CONDITIONS OF SALE FOR SUCH PRODUCTS, NATIONAL ASSUMES NO LIABILITY WHATSOEVER, AND NATIONAL DISCLAIMS ANY EXPRESS OR IMPLIED WARRANTY RELATING TO THE SALE AND/OR USE OF NATIONAL PRODUCTS INCLUDING LIABILITY OR WARRANTIES RELATING TO FITNESS FOR A PARTICULAR PURPOSE, MERCHANTABILITY, OR INFRINGEMENT OF ANY PATENT, COPYRIGHT OR OTHER INTELLECTUAL PROPERTY RIGHT.

LIFE SUPPORT POLICY

NATIONAL'S PRODUCTS ARE NOT AUTHORIZED FOR USE AS CRITICAL COMPONENTS IN LIFE SUPPORT DEVICES OR SYSTEMS WITHOUT THE EXPRESS PRIOR WRITTEN APPROVAL OF THE CHIEF EXECUTIVE OFFICER AND GENERAL COUNSEL OF NATIONAL SEMICONDUCTOR CORPORATION. As used herein:

Life support devices or systems are devices which (a) are intended for surgical implant into the body, or (b) support or sustain life and whose failure to perform when properly used in accordance with instructions for use provided in the labeling can be reasonably expected to result in a significant injury to the user. A critical component is any component in a life support device or system whose failure to perform can be reasonably expected to cause the failure of the life support device or system or to affect its safety or effectiveness.

National Semiconductor and the National Semiconductor logo are registered trademarks of National Semiconductor Corporation. All other brand or product names may be trademarks or registered trademarks of their respective holders.

Copyright© 2009 National Semiconductor Corporation

For the most current product information visit us at www.national.com



**National Semiconductor
Americas Technical
Support Center**
Email: support@nsc.com
Tel: 1-800-272-9959

**National Semiconductor Europe
Technical Support Center**
Email: europe.support@nsc.com
German Tel: +49 (0) 180 5010 771
English Tel: +44 (0) 870 850 4288

**National Semiconductor Asia
Pacific Technical Support Center**
Email: ap.support@nsc.com

**National Semiconductor Japan
Technical Support Center**
Email: jpn.feedback@nsc.com