

LMZ10504 4A Demo Board SIMPLE SWITCHER® Power Module Quick Start Guide

National Semiconductor
Application Note 2030
Ricardo Capetillo
January 22, 2010



Introduction

The LMZ10504 SIMPLE SWITCHER® power module is a complete, easy-to-use DC-DC solution capable of driving up to a 4A load with exceptional power conversion efficiency, output voltage accuracy, line and load regulation. The LMZ10504 is available in an innovative package that enhances thermal performance and allows for hand or machine soldering.

The LMZ10504 can accept an input voltage rail between 2.95V and 5.5V and deliver an adjustable and highly accurate output voltage as low as 0.8V. One megahertz fixed frequency PWM switching provides a predictable EMI characteristic. Two external compensation components can be adjusted to set the fastest response time, while allowing the option to use ceramic and/or electrolytic output capacitors. Externally programmable soft-start capacitor facilitates controlled startup. The LMZ10504 is a reliable and robust solution with the following features: lossless cycle-by-cycle peak current limit to protect for over current or short-circuit fault, thermal shut-down, input under-voltage lock-out, and pre-biased startup.

Packaging Highlights

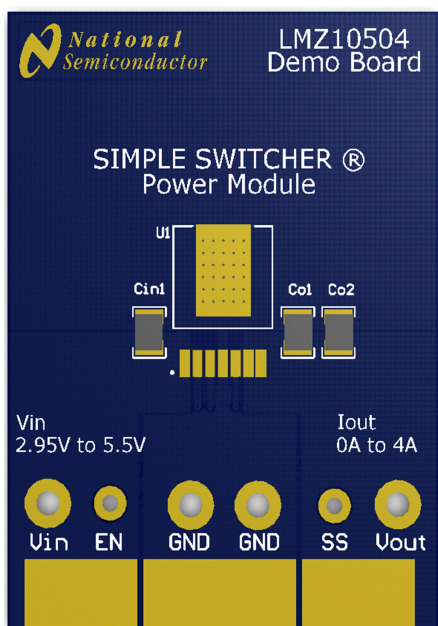
- Single exposed pad and standard pin out for easy mounting and manufacturing
- 10.2 x 13.8 x 4.6 mm (0.4 x 0.39 x 0.18 in) package
- 20W maximum total output power
- 1.7" x 2.3" (4.3 cm x 5.8 cm) reduced size demo board form factor

Demo Board Features

- Power input voltage range 2.95V-5.5V
- Input UVLO at 2.7V
- Adjustable output voltage range 0.8V to 5V
- Up to 4A output current
- Integrated shielded inductor in module
- Efficiency up to 96% at 1A load
- All ceramic capacitor design
- Partial compensation allows adjustment of the control loop
- Starts into pre-biased loads
- $\pm 1.63\%$ maximum feedback voltage accuracy over temperature
- $\pm 2.5\%$ maximum feedback voltage accuracy over full line, load, and temperature conditions
- Thermal Shutdown
- Only 9 external passives plus module
- Two layer low cost assembly

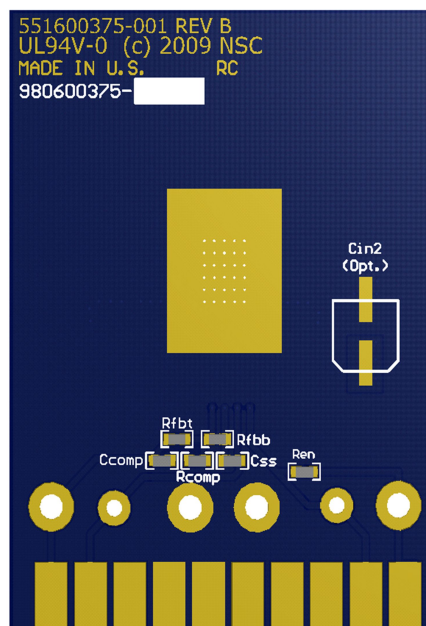
Typical Applications

- Point-of-load conversions from 3.3V and 5V rails
- Space constrained applications
- Extreme temperatures/no air flow environments
- Noise sensitive applications (i.e. transceiver, medical)
- Industrial controls
- Networking equipment



Top Layer

30114211



Bottom Layer

30114212

Absolute Maximum Module Ratings

V _{IN} to GND	-0.3V to 6V
EN, FB, SS to GND	-0.3V to 6V

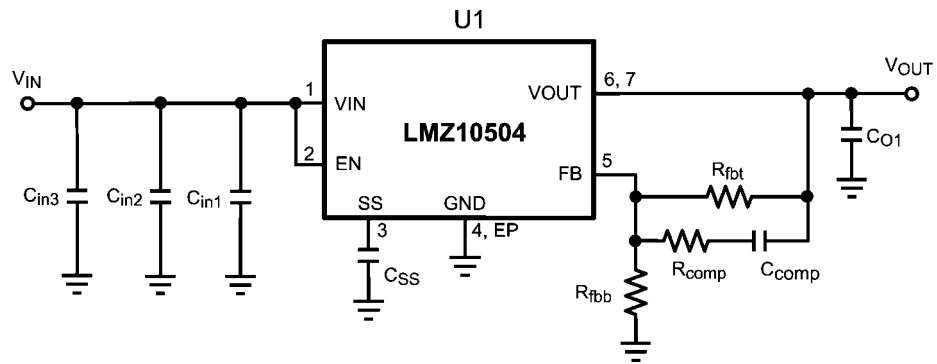
Module Operating Ratings

V _{IN}	2.95V to 5.5V
Junction Temperature Range (T _J)	-40°C to +125°C

Demo Board Operating Ratings

V _{IN}	2.95V to 5.5V
V _{OUT}	2.5V
I _{OUT}	0A to 4A
Softstart time	4 ms
Operating Ambient Temperature Range (T _A)	- 40°C to +94°C (at full 4A load)
θ _{JA}	30°C/W
θ _{JC}	1.9°C/W
Board Dimensions	1.7 x 2.3 (4.3 cm x 5.8 cm)
Number of Layers	2

Demo Board Schematic



30114203

Demo Board Bill of Materials

Ref Des	Description	Case Size	Manufacturer	Manufacturer P/N	Quantity
U1	SIMPLE SWITCHER®	TO-PMOD	National Semiconductor	LMZ10504	1
C _{in1} , C _{o1} , C _{o2}	47 μ F, X5R, 6.3V	1210	TDK	C3225X5R0J476M	3
C _{in2}	220 μ F, 10V, AL-Elec	E	Panasonic	EEE-FPA221XAP	0*
C _{comp}	120 pF, 5%, C0G, 50V	603	TDK	C1608C0G1H121J	1
C _{ss}	10 nF, 5%, C0G, 25V	603	TDK	C1608C0G1E103J	1
R _{fbt}	75 k Ω	603	Vishay Dale	CRCW060375K0FKEA	1
R _{fb}	34.8 k Ω	603	Vishay Dale	CRCW060334K8FKEA	1
R _{comp}	1.1 k Ω	603	Vishay Dale	CRCW06031K10FKEA	1
R _{en}	100 k Ω	603	Vishay Dale	CRCW0603100KFKEA	1
VIN, GND, VOUT	Turret Terminal	1502-2	Keystone	1502-2K-ND	4
EN, SS	Turret Terminal	1593-2	Keystone	1593-2K-ND	2

* Not installed

TABLE 1. Output Voltage Setting (R_{fbt} = 75 k Ω)

V _{OUT}	R _{fb}
3.3 V	23.7 k Ω
2.5 V	34.8 k Ω
1.8 V	59 k Ω
1.5 V	84.5 k Ω
1.2 V	150 k Ω
0.9 V	590 k Ω

Demo Board Hookup

VOUT Connect the load to VOUT and one of the GND posts. The module can source up to a 4A load current.

VIN Connect VIN to a positive voltage in the 2.95 to 5.5V range. Connect the negative terminal of the source supply to one of the posts labeled GND.

EN The enable is configured with a 100 k Ω pull up resistor, which enables the LMZ10504, but also allows the user to disable the LMZ10504, by pulling low on the EN post.

Quiescent current If the enable post is pulled low, the module will be disabled and about 260 μ A of supply current will flow into VIN (pin 1). To enable the device, leave the enable

post open, there will be approximately 12 mA of no-load quiescent current into the VIN post. (VIN to ground voltage at the post set to 3.3V).

Demo Board Passive Components

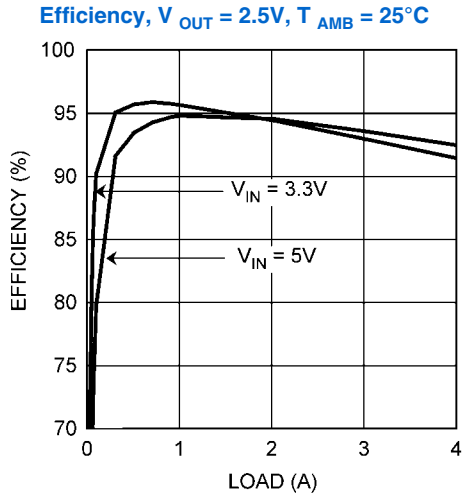
Soft-start capacitor The soft-start capacitor controls the rise time of the output voltage when power is first applied and following the clearing of a fault mode.

Feedback divider Regulator output voltage is programmed though the selection of the two resistors, R_{fb} and R_{fbt}. C_{comp} R_{comp} is located in parallel with the upper feedback divider resistor, R_{fbt}. These components adjust the control loop and will improve the step response to abrupt changes in load current and input voltage.

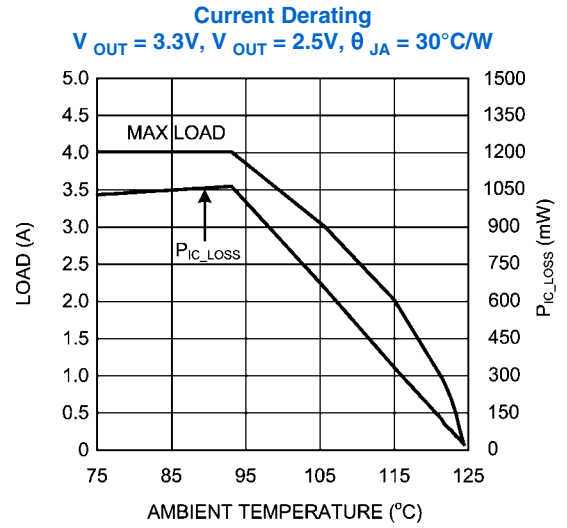
Output Capacitor Parallel connections of two 47 μ F 6.3V multilayer ceramic are used for the output capacitor.

Input Capacitor A 47 μ F 6.3V multilayer ceramic (C_{in1}) supplies the fast switching current generated from the quick rise time of the internal MOSFET. C_{in1} is also the energy reservoir for the input line. Additionally, C_{in2} is not installed, but is a placeholder for an aluminum capacitor to reduce the resonance of the input line produced by the inductance and resistance in the cables connecting the bench power supply to the evaluation board and the input capacitors.

Performance Characteristics

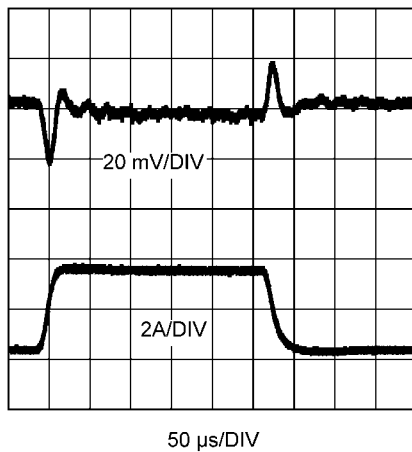


30114204



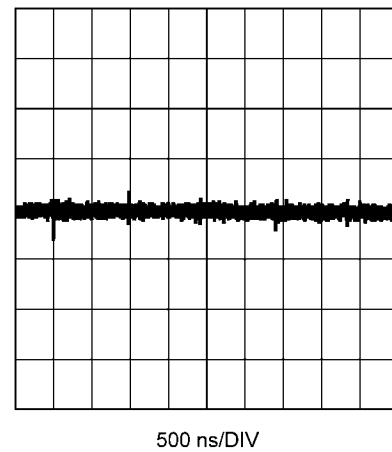
30114205

Load Transient Response
 $V_{OUT} = 5V$, $V_{OUT} = 2.5V$, $I_{OUT} = 0.4A$ to $3.6A$ step
 20 mV/DIV, 20 MHz Bandwidth Limited

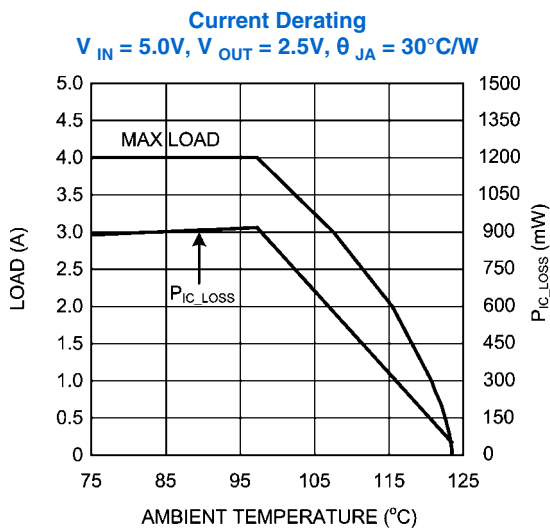


30114206

Output Voltage Ripple
 $V_{OUT} = 3.3V$, $V_{OUT} = 2.5V$, $I_{OUT} = 4A$, 20 mV/DIV

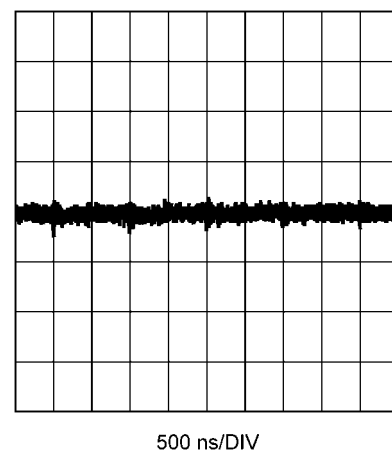


30114207



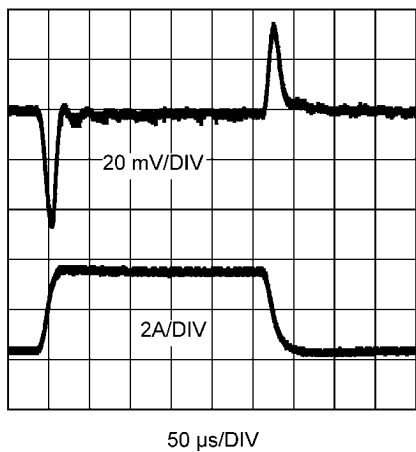
30114208

Output Voltage Ripple
 $V_{IN} = 5V$, $V_{OUT} = 2.5V$, $I_{OUT} = 4A$, 20 mV/DIV



30114209

Load Transient Response
 $V_{IN} = 3.3V$, $V_{OUT} = 2.5V$, $I_{OUT} = 0.4A$ to $3.6A$ step
20 mV/DIV, 20 MHz Bandwidth Limited



30114210

Notes

For more National Semiconductor product information and proven design tools, visit the following Web sites at:
www.national.com

Products		Design Support	
Amplifiers	www.national.com/amplifiers	WEBENCH® Tools	www.national.com/webench
Audio	www.national.com/audio	App Notes	www.national.com/appnotes
Clock and Timing	www.national.com/timing	Reference Designs	www.national.com/refdesigns
Data Converters	www.national.com/adac	Samples	www.national.com/samples
Interface	www.national.com/interface	Eval Boards	www.national.com/evalboards
LVDS	www.national.com/lvds	Packaging	www.national.com/packaging
Power Management	www.national.com/power	Green Compliance	www.national.com/quality/green
Switching Regulators	www.national.com/switchers	Distributors	www.national.com/contacts
LDOs	www.national.com/ldo	Quality and Reliability	www.national.com/quality
LED Lighting	www.national.com/led	Feedback/Support	www.national.com/feedback
Voltage References	www.national.com/vref	Design Made Easy	www.national.com/easy
PowerWise® Solutions	www.national.com/powerwise	Applications & Markets	www.national.com/solutions
Serial Digital Interface (SDI)	www.national.com/sdi	Mil/Aero	www.national.com/milaero
Temperature Sensors	www.national.com/tempsensors	SolarMagic™	www.national.com/solarmagic
PLL/VCO	www.national.com/wireless	PowerWise® Design University	www.national.com/training

THE CONTENTS OF THIS DOCUMENT ARE PROVIDED IN CONNECTION WITH NATIONAL SEMICONDUCTOR CORPORATION ("NATIONAL") PRODUCTS. NATIONAL MAKES NO REPRESENTATIONS OR WARRANTIES WITH RESPECT TO THE ACCURACY OR COMPLETENESS OF THE CONTENTS OF THIS PUBLICATION AND RESERVES THE RIGHT TO MAKE CHANGES TO SPECIFICATIONS AND PRODUCT DESCRIPTIONS AT ANY TIME WITHOUT NOTICE. NO LICENSE, WHETHER EXPRESS, IMPLIED, ARISING BY ESTOPPEL OR OTHERWISE, TO ANY INTELLECTUAL PROPERTY RIGHTS IS GRANTED BY THIS DOCUMENT.

TESTING AND OTHER QUALITY CONTROLS ARE USED TO THE EXTENT NATIONAL DEEMS NECESSARY TO SUPPORT NATIONAL'S PRODUCT WARRANTY. EXCEPT WHERE MANDATED BY GOVERNMENT REQUIREMENTS, TESTING OF ALL PARAMETERS OF EACH PRODUCT IS NOT NECESSARILY PERFORMED. NATIONAL ASSUMES NO LIABILITY FOR APPLICATIONS ASSISTANCE OR BUYER PRODUCT DESIGN. BUYERS ARE RESPONSIBLE FOR THEIR PRODUCTS AND APPLICATIONS USING NATIONAL COMPONENTS. PRIOR TO USING OR DISTRIBUTING ANY PRODUCTS THAT INCLUDE NATIONAL COMPONENTS, BUYERS SHOULD PROVIDE ADEQUATE DESIGN, TESTING AND OPERATING SAFEGUARDS.

EXCEPT AS PROVIDED IN NATIONAL'S TERMS AND CONDITIONS OF SALE FOR SUCH PRODUCTS, NATIONAL ASSUMES NO LIABILITY WHATSOEVER, AND NATIONAL DISCLAIMS ANY EXPRESS OR IMPLIED WARRANTY RELATING TO THE SALE AND/OR USE OF NATIONAL PRODUCTS INCLUDING LIABILITY OR WARRANTIES RELATING TO FITNESS FOR A PARTICULAR PURPOSE, MERCHANTABILITY, OR INFRINGEMENT OF ANY PATENT, COPYRIGHT OR OTHER INTELLECTUAL PROPERTY RIGHT.

LIFE SUPPORT POLICY

NATIONAL'S PRODUCTS ARE NOT AUTHORIZED FOR USE AS CRITICAL COMPONENTS IN LIFE SUPPORT DEVICES OR SYSTEMS WITHOUT THE EXPRESS PRIOR WRITTEN APPROVAL OF THE CHIEF EXECUTIVE OFFICER AND GENERAL COUNSEL OF NATIONAL SEMICONDUCTOR CORPORATION. As used herein:

Life support devices or systems are devices which (a) are intended for surgical implant into the body, or (b) support or sustain life and whose failure to perform when properly used in accordance with instructions for use provided in the labeling can be reasonably expected to result in a significant injury to the user. A critical component is any component in a life support device or system whose failure to perform can be reasonably expected to cause the failure of the life support device or system or to affect its safety or effectiveness.

National Semiconductor and the National Semiconductor logo are registered trademarks of National Semiconductor Corporation. All other brand or product names may be trademarks or registered trademarks of their respective holders.

Copyright© 2010 National Semiconductor Corporation

For the most current product information visit us at www.national.com



**National Semiconductor
Americas Technical
Support Center**
Email: support@nsc.com
Tel: 1-800-272-9959

**National Semiconductor Europe
Technical Support Center**
Email: europe.support@nsc.com

**National Semiconductor Asia
Pacific Technical Support Center**
Email: ap.support@nsc.com

**National Semiconductor Japan
Technical Support Center**
Email: jpn.feedback@nsc.com