

# LM49250 Evaluation Board User Guide

National Semiconductor  
Application Note 1680  
Nisha Patel  
March 9, 2010



## Introduction

The LM49250 is a fully integrated audio subsystem designed for stereo cell phone applications. The LM49250 combines 2.5W stereo Class D speaker drivers with stereo ground referenced headphone drivers, a class AB earpiece driver, National 3D enhancement, volume control and input mixer into a single device. The filterless class D amplifiers deliver 1.19W/channel into an 8Ω load with <1% THD+N from a 5V supply.

The LM49250 features a new circuit technology that utilizes a charge pump to generate a negative supply voltage. This allows the outputs to be biased about ground, thereby eliminating output-coupling capacitors typically used with normal single-ended loads. To supply the required voltage level to the ground referenced amplifier, an LDO has been integrated. For improved noise immunity, the LM49250 features fully differential left, right and mono inputs. The three inputs can be mixed/multiplexed to either the loudspeaker, headphone or earpiece amplifiers. The left and right differential inputs can be used as separate single-ended inputs, mixing multiple stereo audio sources. The mixer, volume control, and device mode select are controlled through an I<sup>2</sup>C compatible interface.

Output short circuit and thermal overload protection prevent the device from being damaged during fault conditions. Superior click and pop suppression eliminates audible transients on power-up/down and during shutdown.

The LM49250 Evaluation board (shown in Figure 1) allows the user to easily evaluate the performance and characteristics of the LM49250 device. It provides connectors for audio inputs, audio outputs, I<sup>2</sup>C control, power supply, and shutdown control.

## Quick Start

1. Connect a shunt across the center pin (I<sup>2</sup>C VDD) and VDD pin of J9 (I<sup>2</sup>CVDD = VDD).
2. Connect a shunt across the center RESET pin and the "+" terminal of J4 (I<sup>2</sup>C reset pin).

3. Connect a 4Ω or 8Ω speaker across the "+" and "-" pins of J2 (left loudspeaker output) and J3 (right loudspeaker output).
4. Connect stereo headphones to the headphone jack (U2).
5. Connect a 16Ω or 32Ω speaker across the "+" and "-" pins of J1 (earpiece output).
6. Connect a 3.6V power supply to the VDD pin of J8, and the power supply ground source to the GND pin of J8.
7. Apply a positive audio signal source to the "+" terminals of J5 (right input), J6 (left input), and J7 (mono input), and a negative audio signal source to the "-" terminals of J5 (right input), J6 (left input), and J7 (mono input).
8. Connect the USB interface card to a PC with the USB cable. Connect cable attached to USB interface card to the I<sup>2</sup>C interface jumper (J10) on demo board.
9. Open LM49250 I<sup>2</sup>C interface software.
10. Turn on power supply and audio source.
11. In the LM49250 I<sup>2</sup>C interface software (see Figure 2) select:
  - a. "ON" for Earpiece, Left Loudspeaker, Right Loudspeaker, Left Headphone, and Right Headphone
  - b. Mode "2" for Loudspeaker Output Mode, Headphone Output Mode, and Earpiece Output Mode
12. Select Chip Power to "ON" to enable the device.
13. Adjust the Left, Right, and Mono Volume Control to obtain the desired output level.

## Operating Conditions

- Temperature Range  $-40^{\circ}\text{C} \leq T_A \leq +85^{\circ}\text{C}$
- Supply Voltage  $(V_{DD} = V_{DD(LS)} = V_{DD(CP)})$   
 $2.7\text{V} \leq V_{DD} \leq 5.5\text{V}$
- I<sup>2</sup>C Supply Voltage  $1.7\text{V} \leq I^2CV_{DD} \leq 5.5\text{V}$   
 $I^2CV_{DD} \leq V_{DD}$



**FIGURE 1. Evaluation Board Schematic**

TABLE 1. Board Connectors

Designator	Label	Function
J1	EP	Mono BTL earpiece audio output
J2	LS_L	Left loudspeaker class D audio output
J3	LS_R	Right loudspeaker class D audio output
J4	RESET	I <sup>2</sup> C Reset Pin - For normal operation short the center RESET pin to the “+” pin. To reset the PWR_ON bit in the shutdown control register short the center RESET pin to the “-” terminal.
J5	IN_R	Right, single ended or differential, audio input terminal
J6	IN_L	Left, single ended or differential, audio input terminal
J7	IN_M	Mono differential audio input terminal
J8	VDD GND	Power Supply Connection
J9	I <sup>2</sup> CV <sub>DD</sub>	If a separate I <sup>2</sup> C power supply voltage is used: Connect the positive voltage source to the center I <sup>2</sup> CV <sub>DD</sub> terminal and the ground source to the pin on J9 labeled GND. If a separate I <sup>2</sup> C power supply is not used: Connect the center I <sup>2</sup> CV <sub>DD</sub> to the pin on J9 labeled V <sub>DD</sub> .
J10		I <sup>2</sup> C signal terminals. Pin 1 is for the SCL signal, pin 2 is for the ADR signal, pin 3 is for the SDA signal, pin 4 is for I <sup>2</sup> C V <sub>DD</sub> , and pin 5 is ground (as labeled on the evaluation board).
J11	HP_R	Right ground referenced headphone output terminal
J12	HP_L	Left ground referenced headphone output terminal

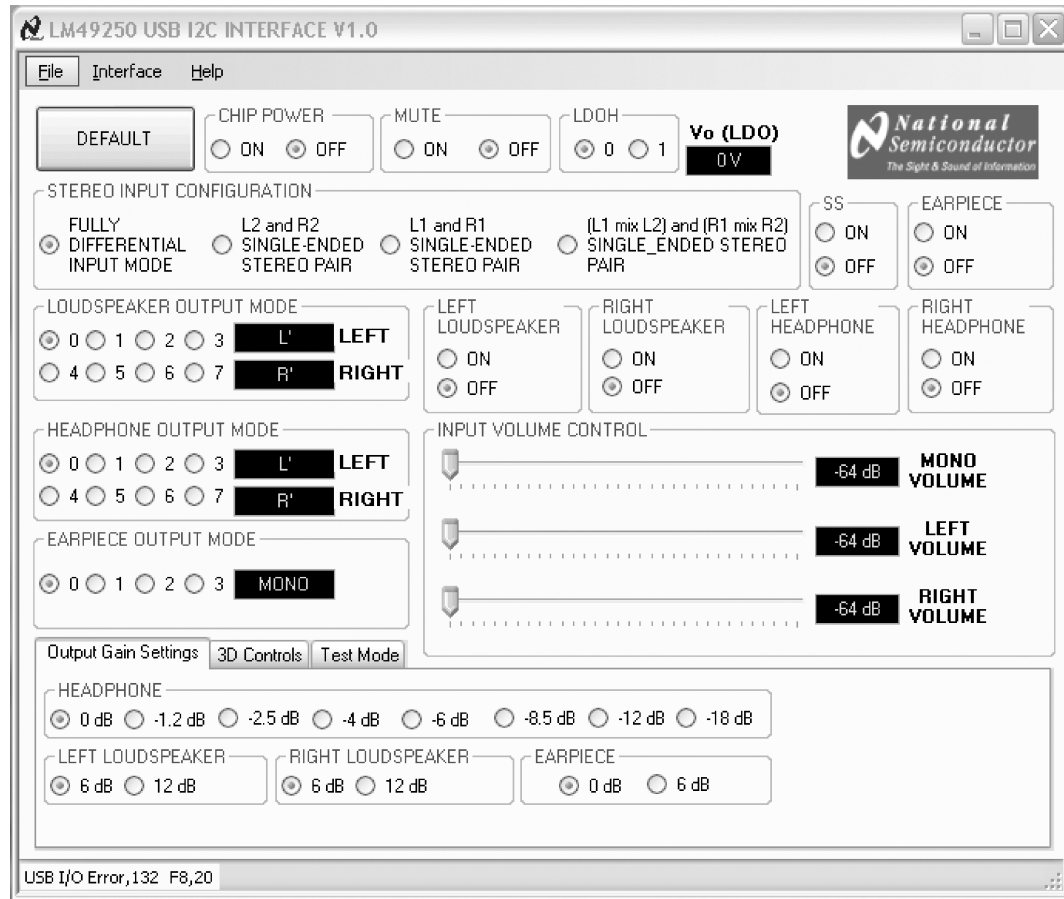
TABLE 2. Evaluation Board Bill of Materials

Designator	Part Description	Manufacturer	Part Number
C1 – C6	ceramic capacitor 1μF 16V X7R 1206 10%	muRata	GRM319R71C105KC11D
C7, C13, C14, C15	ceramic capacitor 2.2μF 16V X5R 0805	muRata	GRM21BR61C225KA88L
C8, C9, C10	ceramic capacitor 2.2μF 16V X5R 0805	muRata	GRM21BR61C225KA88L
C11, C12	ceramic capacitor 68nF 16V X7R 0805	muRata	GRM188R71C683KA01D
C16	ceramic capacitor 1μF 16V X7R 0805	muRata	GRM21BR71C105KA01L
R1, R2	resistor 0W 1/8W 5% 0805 SMD		

## I<sup>2</sup>C Software Interface

The LM49250 evaluation board is controlled through an I<sup>2</sup>C compatible USB interface. The LM49250 I<sup>2</sup>C interface soft-

ware provides a user friendly interface to easily evaluate the functionality of the device. Each button corresponds to bits in an I<sup>2</sup>C command byte. See LM49250 datasheet for detailed I<sup>2</sup>C information.



30029111

FIGURE 2. LM49250 I<sup>2</sup>C Software Interface

### Default

The DEFAULT button sets the LM49250 and the interface software to its default state. In the default state all output amplifiers, spread spectrum, and 3D controls are off, all output modes are set to 0, the fully differential input mode is selected, all input gains are set to -64dB, right and left loudspeaker output gain is 6dB, and headphone and earpiece output gain are set to 0dB. Each time the power supply to the device is cycled, the interface must be reset to its default state.

### Chip Power

The Chip Power button enables or disables the entire device. Even if an individual amplifier channel is enabled, the device will not output any audio if the Chip Power button is set to "OFF".

### LDOH

The LDOH button enables and disables the internal LDO. The LDO is used to drive the ground referenced headphone am-

plifiers. This allows the speaker and headphone amplifiers to operate from separate power supplies. The separate power supplies allow the speaker amplifiers to operate from a higher voltage for maximum headroom, while the headphone amplifiers operate from a lower voltage, improving power dissipation.

If the LDO and the Chip Power is enabled, 2.25V will be seen at the VO(LDO) pin. However, if the LDO is disabled but either headphone output is enabled, 2.25V will be seen at the VO (LDO) pin (see Table 3).

TABLE 3. LDO Disabling Options

LDOH	HPR_ON/HPL_ON	PWR_ON	V <sub>O(LDO)</sub> (V)
0	0	X	0
0	1	1	2.25
1	X	0	VDD
1	1	0	2.25
0	1	0	

## Spread Spectrum

The LM49250 features a filterless spread spectrum modulation scheme. The switching frequency varies which reduces the wideband spectral content. This improves EMI emissions radiated by the speaker and associated cables and traces. The spread spectrum function can be turned on and off through the “SS” section of the interface software.

## Input Audio Signal Selection

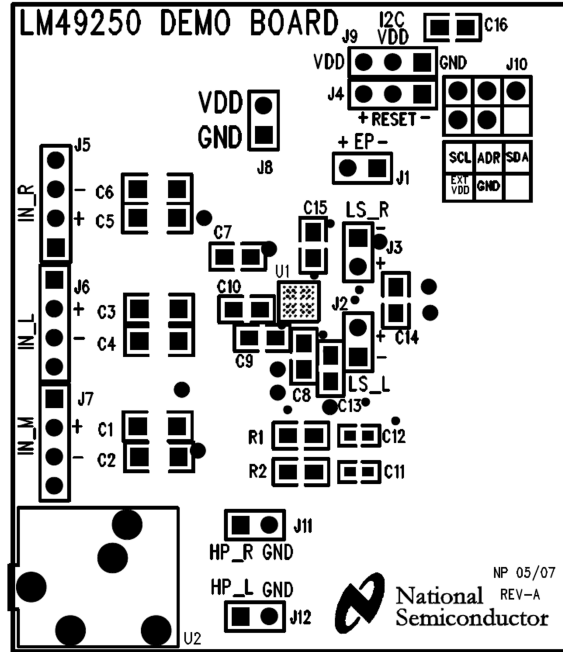
The LM49250 has a single mono differential input and left and right stereo inputs that can be configured for both single ended and differential audio signals. The stereo input configurations can be set in the “STEREO INPUT CONFIGURATION” portion of the software interface. Select “FULLY DIFFERENTIAL INPUT MODE” to configure the left and right inputs for differential operation. Select “L2 and R2 SINGLE-ENDED STEREO PAIR” to configure the device to accept single ended audio inputs connected to L2 and R2. Select “L1 and R1 SINGLE-ENDED STEREO PAIR” to configure the device to accept single ended audio inputs connected to L1 and R2. Select “(L1 mix L2) and (R1 mix R2) SINGLE ENDED

STEREO PAIR” to configure the device to accept two single ended stereo sources, connected to both input pairs.

## Volume Control and Gain Setting

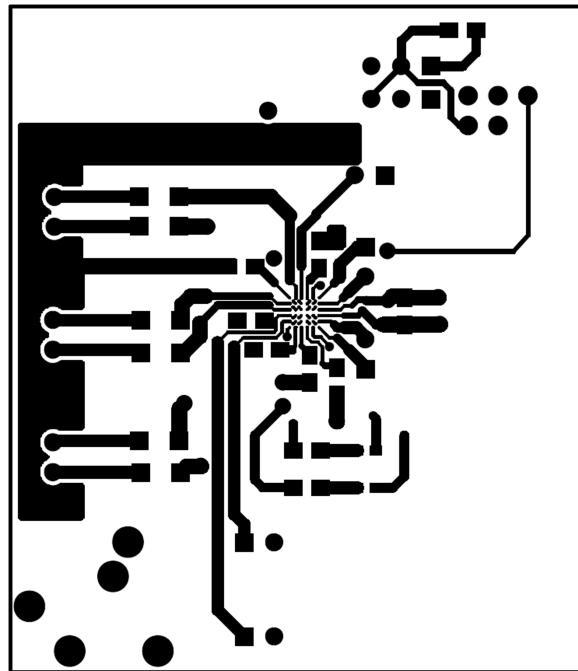
Each channel of the LM49250 has two separate gain stages. Each input stage (mono, left and right) features a 32 step volume control that can be configured through the “INPUT VOLUME CONTROL” section of the interface software. The output gain settings can be set under the “Output Gain Settings” tab in the interface software. The loudspeaker output gain for the left and right channels are set independently, while the headphone gain is the same for both left and right channels. The earpiece output stage has two gain settings, 0dB and 6dB. Each loud speaker output stage has two gain settings, 6dB and 12dB. The headphone output stage has 8 gain settings, 0dB, -1.2dB, -2.5dB, -4dB, -6dB, -8.5dB, -12dB and -18dB. In single-ended input mode with only one stereo signal applied, the loudspeaker and headphone output stage gain settings are increased by 6dB. The total gain for a given signal path can be calculated by adding the input volume control gain to the output gain setting.

## Demonstration Board Layout



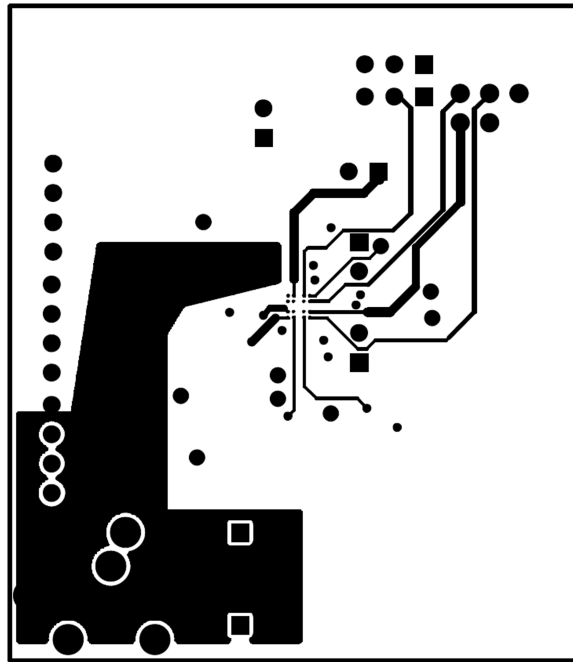
Top Silkscreen

30029110



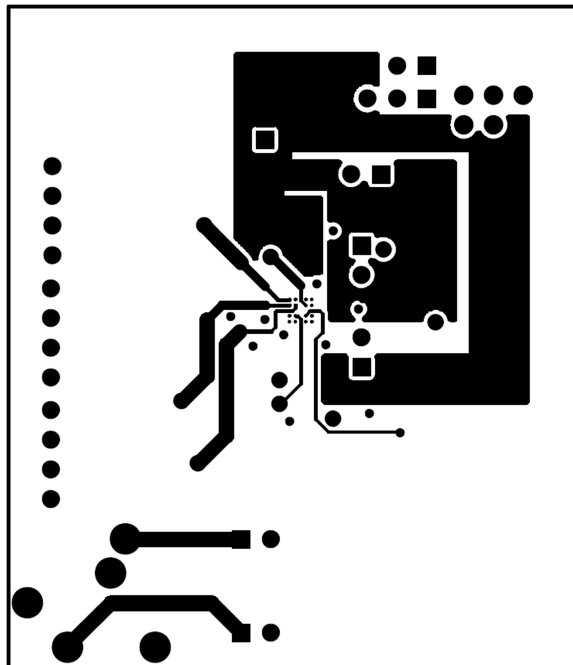
Top Layer

30029109



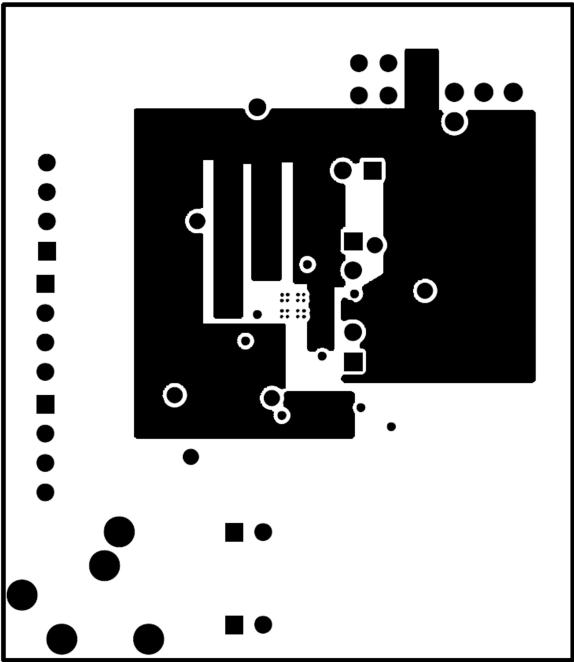
30029107

Layer 2



30029108

Layer 3



Bottom Layer

30029106



## Revision History

Rev	Date	Description
1.0	03/09/10	Initial WEB released.

For more National Semiconductor product information and proven design tools, visit the following Web sites at:  
[www.national.com](http://www.national.com)

Products		Design Support	
Amplifiers	<a href="http://www.national.com/amplifiers">www.national.com/amplifiers</a>	WEBENCH® Tools	<a href="http://www.national.com/webench">www.national.com/webench</a>
Audio	<a href="http://www.national.com/audio">www.national.com/audio</a>	App Notes	<a href="http://www.national.com/appnotes">www.national.com/appnotes</a>
Clock and Timing	<a href="http://www.national.com/timing">www.national.com/timing</a>	Reference Designs	<a href="http://www.national.com/refdesigns">www.national.com/refdesigns</a>
Data Converters	<a href="http://www.national.com/adc">www.national.com/adc</a>	Samples	<a href="http://www.national.com/samples">www.national.com/samples</a>
Interface	<a href="http://www.national.com/interface">www.national.com/interface</a>	Eval Boards	<a href="http://www.national.com/evalboards">www.national.com/evalboards</a>
LVDS	<a href="http://www.national.com/lvds">www.national.com/lvds</a>	Packaging	<a href="http://www.national.com/packaging">www.national.com/packaging</a>
Power Management	<a href="http://www.national.com/power">www.national.com/power</a>	Green Compliance	<a href="http://www.national.com/quality/green">www.national.com/quality/green</a>
Switching Regulators	<a href="http://www.national.com/switchers">www.national.com/switchers</a>	Distributors	<a href="http://www.national.com/contacts">www.national.com/contacts</a>
LDOs	<a href="http://www.national.com/ldo">www.national.com/ldo</a>	Quality and Reliability	<a href="http://www.national.com/quality">www.national.com/quality</a>
LED Lighting	<a href="http://www.national.com/led">www.national.com/led</a>	Feedback/Support	<a href="http://www.national.com/feedback">www.national.com/feedback</a>
Voltage References	<a href="http://www.national.com/vref">www.national.com/vref</a>	Design Made Easy	<a href="http://www.national.com/easy">www.national.com/easy</a>
PowerWise® Solutions	<a href="http://www.national.com/powerwise">www.national.com/powerwise</a>	Applications & Markets	<a href="http://www.national.com/solutions">www.national.com/solutions</a>
Serial Digital Interface (SDI)	<a href="http://www.national.com/sdi">www.national.com/sdi</a>	Mil/Aero	<a href="http://www.national.com/milaero">www.national.com/milaero</a>
Temperature Sensors	<a href="http://www.national.com/tempsensors">www.national.com/tempsensors</a>	SolarMagic™	<a href="http://www.national.com/solarmagic">www.national.com/solarmagic</a>
PLL/VCO	<a href="http://www.national.com/wireless">www.national.com/wireless</a>	PowerWise® Design University	<a href="http://www.national.com/training">www.national.com/training</a>

THE CONTENTS OF THIS DOCUMENT ARE PROVIDED IN CONNECTION WITH NATIONAL SEMICONDUCTOR CORPORATION ("NATIONAL") PRODUCTS. NATIONAL MAKES NO REPRESENTATIONS OR WARRANTIES WITH RESPECT TO THE ACCURACY OR COMPLETENESS OF THE CONTENTS OF THIS PUBLICATION AND RESERVES THE RIGHT TO MAKE CHANGES TO SPECIFICATIONS AND PRODUCT DESCRIPTIONS AT ANY TIME WITHOUT NOTICE. NO LICENSE, WHETHER EXPRESS, IMPLIED, ARISING BY ESTOPPEL OR OTHERWISE, TO ANY INTELLECTUAL PROPERTY RIGHTS IS GRANTED BY THIS DOCUMENT.

TESTING AND OTHER QUALITY CONTROLS ARE USED TO THE EXTENT NATIONAL DEEMS NECESSARY TO SUPPORT NATIONAL'S PRODUCT WARRANTY. EXCEPT WHERE MANDATED BY GOVERNMENT REQUIREMENTS, TESTING OF ALL PARAMETERS OF EACH PRODUCT IS NOT NECESSARILY PERFORMED. NATIONAL ASSUMES NO LIABILITY FOR APPLICATIONS ASSISTANCE OR BUYER PRODUCT DESIGN. BUYERS ARE RESPONSIBLE FOR THEIR PRODUCTS AND APPLICATIONS USING NATIONAL COMPONENTS. PRIOR TO USING OR DISTRIBUTING ANY PRODUCTS THAT INCLUDE NATIONAL COMPONENTS, BUYERS SHOULD PROVIDE ADEQUATE DESIGN, TESTING AND OPERATING SAFEGUARDS.

EXCEPT AS PROVIDED IN NATIONAL'S TERMS AND CONDITIONS OF SALE FOR SUCH PRODUCTS, NATIONAL ASSUMES NO LIABILITY WHATSOEVER, AND NATIONAL DISCLAIMS ANY EXPRESS OR IMPLIED WARRANTY RELATING TO THE SALE AND/OR USE OF NATIONAL PRODUCTS INCLUDING LIABILITY OR WARRANTIES RELATING TO FITNESS FOR A PARTICULAR PURPOSE, MERCHANTABILITY, OR INFRINGEMENT OF ANY PATENT, COPYRIGHT OR OTHER INTELLECTUAL PROPERTY RIGHT.

#### LIFE SUPPORT POLICY

**NATIONAL'S PRODUCTS ARE NOT AUTHORIZED FOR USE AS CRITICAL COMPONENTS IN LIFE SUPPORT DEVICES OR SYSTEMS WITHOUT THE EXPRESS PRIOR WRITTEN APPROVAL OF THE CHIEF EXECUTIVE OFFICER AND GENERAL COUNSEL OF NATIONAL SEMICONDUCTOR CORPORATION.** As used herein:

Life support devices or systems are devices which (a) are intended for surgical implant into the body, or (b) support or sustain life and whose failure to perform when properly used in accordance with instructions for use provided in the labeling can be reasonably expected to result in a significant injury to the user. A critical component is any component in a life support device or system whose failure to perform can be reasonably expected to cause the failure of the life support device or system or to affect its safety or effectiveness.

National Semiconductor and the National Semiconductor logo are registered trademarks of National Semiconductor Corporation. All other brand or product names may be trademarks or registered trademarks of their respective holders.

Copyright© 2010 National Semiconductor Corporation

For the most current product information visit us at [www.national.com](http://www.national.com)



**National Semiconductor  
Americas Technical  
Support Center**  
Email: [support@nsc.com](mailto:support@nsc.com)  
Tel: 1-800-272-9959

**National Semiconductor Europe  
Technical Support Center**  
Email: [europe.support@nsc.com](mailto:europe.support@nsc.com)

**National Semiconductor Asia  
Pacific Technical Support Center**  
Email: [ap.support@nsc.com](mailto:ap.support@nsc.com)

**National Semiconductor Japan  
Technical Support Center**  
Email: [jpn.feedback@nsc.com](mailto:jpn.feedback@nsc.com)