

3A LM20k Reference Designs

National Semiconductor
Application Note 1747
Daniel Tennant and Dennis Hudgins
November 9, 2007



Introduction

The LM20123, LM20133, and LM20143 are a full-featured family of high performance 3A synchronous buck converters. These devices are tailored to operate over an input voltage range of 2.95V to 5.5V and each can be optimized to meet many different performance requirements. The LM20123 operates at a fixed frequency and only requires 11 components to generate a solution. The LM20143 is similar to the LM20123 except the frequency of the device can be varied from 460 kHz to 1.5 MHz with an external resistor. This gives the power supply designer the flexibility to trade-off inductor size and efficiency. The LM20133 features a synchronization input pin that synchronizes the internal oscillator to an external signal to keep the switching regulators operating with the same phase which is critical in many noise sensitive designs. The reference designs discussed will show how the 3A devices can be optimized for size, efficiency and transient response. The trade-offs made for each design will be discussed the various 3A devices. Test results for including efficiency, output voltage ripple, and transient response will be shown for each design.

Solution Optimized for Efficiency

The LM20143 was selected for a high-efficiency design because the operating frequency can be adjusted to minimize switching losses. A low switching frequency will minimize the switching losses; however, this will also require a solution with a higher value inductance with a higher DC series resistance (DCR). Since the LM20k family of devices feature very low switching losses a switching frequency of 620 kHz was selected. This choice of operating frequency balances the inductance DCR losses with the switching frequency losses to give a small, highly efficient solution. This design can also work with the LM20133 synchronizing to 620 kHz.

INDUCTOR SELECTION

As per the datasheet recommendations, the inductor value should initially be chosen to give a peak-to-peak ripple current equal to roughly 30% of the maximum output current. The peak-to-peak inductor ripple current can be calculated by the equation:

$$\Delta I_{P-P} = \frac{(V_{IN} - V_{OUT}) \times D}{L \times f_{SW}} \quad (1)$$

Rearranging the above equation and solving for the inductance reveals that for this application ($V_{IN} = 5V$, $V_{OUT} = 3.3V$, $D = V_{IN}/V_{OUT} = .66$, $f_{SW} = 620 \text{ kHz}$, and $I_{OUT} = 3A$) the nominal inductance value is roughly 2 μH . Once an inductance value is calculated, an actual inductor needs to be selected based on a trade-off between physical size, efficiency, and current

carrying capability. The purpose of this design is to maximize the efficiency therefore, the choice of small value inductors with lower series resistance (DCR) can be examined provided the output current plus one-half the peak to peak ripple current does not exceed the device current limit. Examining several inductor vendors a TDK SPM6530T-1R5M100 inductor was selected. This 1.5 μH inductor results in a peak-to-peak ripple current of 1.2A when the converter is operating from 5V and 3.3V. For the a design targeting high efficiency the TDK SPM6530T-1R5M100 inductor offers a good balance between efficiency (9.7 m Ω DCR), size, and saturation current rating (10A I_{SAT} rating).

OUTPUT CAPACITOR SELECTION

The value of the output capacitor in a buck regulator influences the voltage ripple that will be present on the output voltage, as well as the large signal output voltage response to a load transient. Given the peak-to-peak inductor current ripple (which can be calculated using equation 1) the output voltage ripple can be approximated by the equation:

$$\Delta V_{OUT} = \Delta I_{P-P} \times \left[R_{ESR} + \frac{1}{8 \times f_{SW} \times C_{OUT}} \right] \quad (2)$$

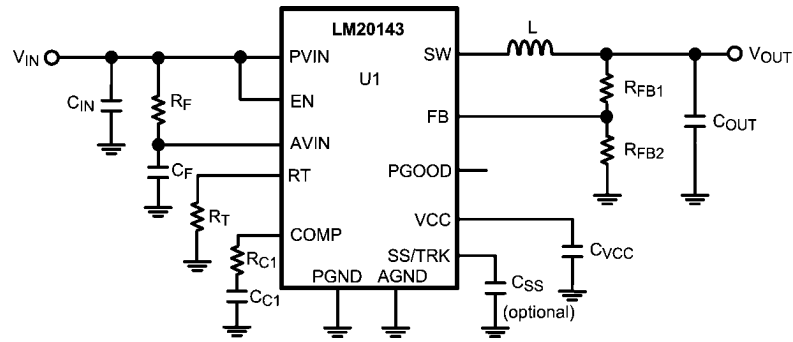
The variable R_{ESR} above refers to the ESR of the output capacitor. As can be seen in the above equation, the ripple voltage on the output can be divided into two parts, one of which is attributed to the AC ripple current flowing through the ESR of the output capacitor and another due to the AC ripple current actually charging and discharging the output capacitor. The output capacitor also has an effect on the amount of droop that is seen on the output voltage in response to a load transient event.

For this design a TDK 100 μF ceramic capacitor is selected for the output capacitor to provide good transient and DC performance in a relatively small package. From the technical specifications of this capacitor, the ESR at the 1.5 MHz switching frequency is roughly 2 m Ω , and the effective in-circuit capacitance is approximately 45 μF (reduced from 100 μF due to the 3.3V DC bias). With these values, the peak-to-peak voltage ripple on the output when operating from a 5V input can be calculated to be 8 mV.

COMPENSATION SELECTION

The compensation network was selected using the excel calculator to give a crossover frequency of 50 kHz. For this target crossover frequency, operating conditions, and filter components the excel design tool (available online) suggests a value of C_{C1} of 2.7 nF and a value of R_{C1} of 9.31 k Ω .

The final schematic for a 5V or 3.3V conversion optimized for efficiency is shown in Figure 1.



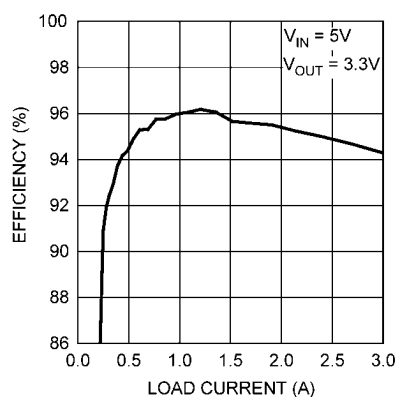
30043807

FIGURE 1. 3.3V Output Solution Optimized for Efficiency

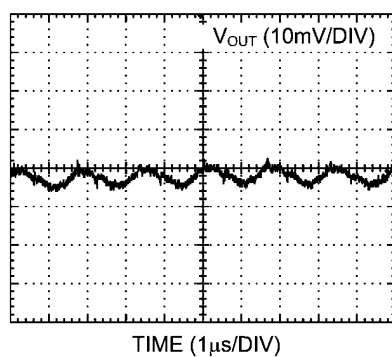
High Efficiency Bill of Materials ($V_{IN} = 5V$, $V_{OUT} = 3.3V$, $I_{OUT(MAX)} = 3A$)

Designator	Description	Part Number	Manufacturer	Qty
U1	Synchronous Buck Regulator	LM20143	National Semiconductor	1
C_{IN}	47 μF , 1206, X5R, 6.3V	C3216JB0J476M	TDK	1
C_{OUT}	100 μF , 1210, X5R, 6.3V	C3225X5R0J107M	TDK	1
L	1.5 μH , 9.7 m Ω	SPM6530T-1R5M100	TDK	1
R_F	1 Ω , 0603	CRCW06031R0J-e3	Vishay-Dale	1
C_F	1 μF , 0603, X7R, 10V	GRM188R71A105KA01	Murata	1
C_{VCC}	1 μF , 0603, X7R, 10V	GRM188R71A105KA01	Murata	1
R_{C1}	9.31 k Ω , 0603	CRCW06039312F	Vishay-Dale	1
C_{C1}	2.7 nF, 0603, X7R, 25V	VJ0603Y272KXA	Vishay-Vitramon	1
C_{SS}	33 nF, 0603, X7R, 25V	VJ0603Y333KXXA	Vishay-Vitramon	1
R_{FB1}	30.9 k Ω , 0603	CRCW06033092F	Vishay-Dale	1
R_{FB2}	10 k Ω , 0603	CRCW06031002F-e3	Vishay-Dale	1
R_T	196 k Ω , 0603	CRCW06031963F	Vishay-Dale	1

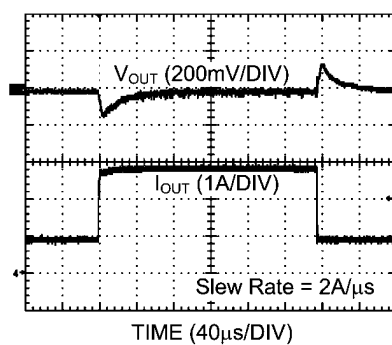
The calculated component PCB area for this design is 104 mm². The efficiency vs. I_{OUT} , output voltage ripple, and transient response are shown below for this solution.



30043808

FIGURE 2. Efficiency vs I_{OUT} 

30043809

FIGURE 3. Output Voltage Ripple

30043810

FIGURE 4. Transient Response

Optimizing a Solution for Size

For the smallest possible solution size the fixed frequency LM20123 device was selected since the 1.5 MHz free running oscillator minimizes both the component count and inductor size. To minimize the solution size careful attention needs to be paid to the selection of the external components such as the inductor, input, and output capacitors.

INDUCTOR SELECTION

The inductor should be sized for approximately 30% ripple current. For $V_{IN} = 5V$, $V_{OUT} = 1.2V$, $f_{SW} = 1.5\text{ MHz}$, and $I_{OUT} = 3A$, the ideal inductance value can be calculated from equation 1 to be $0.68\text{ }\mu\text{H}$. Once an inductance value is calculated, an actual inductor needs to be selected based on a tradeoff between physical size, efficiency, and current carrying capability. Since the purpose of this design is minimize the size, it is possible to select inductor values smaller than $0.68\text{ }\mu\text{H}$, as long as the output current plus one-half the peak to peak ripple current does not exceed the device current limit. After examining several inductor vendors, a Coilcraft LPS4018-561 inductor was selected. This $0.56\text{ }\mu\text{H}$ inductor results in a peak-to-peak ripple current of $1.09A$ and 909 mA when the converter is operating from $5V$ and $3.3V$ respectively. For a

design where size is critical, the Coilcraft LPS4018-561 inductor offers an extremely small size ($3.9\text{mm} \times 3.9\text{mm}$) with relatively low DC losses ($30\text{ m}\Omega\text{ DCR}$), and saturation current rating ($5.2A\text{ }I_{SAT}$ rating) that exceeds the device current limit.

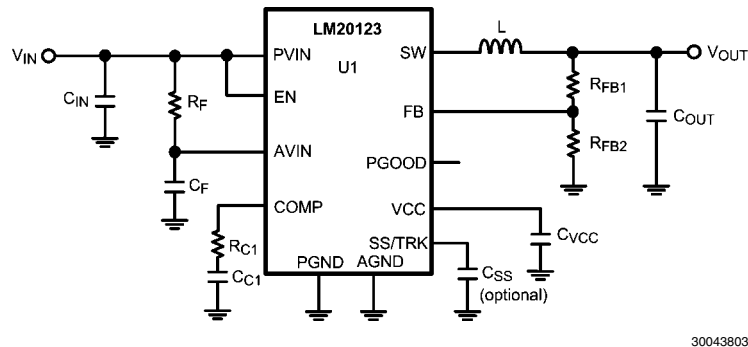
OUTPUT CAPACITOR SELECTION

A TDK $47\text{ }\mu\text{F}$ ceramic capacitor is selected for the output capacitor to provide good transient and DC performance in a relatively small package. From the technical specifications of this capacitor, the ESR at the 1.5 MHz switching frequency is roughly $3\text{ m}\Omega$, and the effective in-circuit capacitance is approximately $28\text{ }\mu\text{F}$ (reduced from $47\text{ }\mu\text{F}$ due to the $1.2V$ DC bias). With these values, the peak-to-peak voltage ripple on the output when operating from a $5V$ input can be calculated to be 6 mV .

COMPENSATION SELECTION

The compensation network was selected using the excel calculator to give a crossover frequency of 119 kHz . For this target crossover frequency, operating conditions, and filter components selected above, the excel calculator suggested a value of C_{C1} of 2.2 nF and a value of R_{C1} of $3.65\text{ k}\Omega$.

The final schematic for a $5V$ to $1.2V$ or $3.3V$ to $1.2V$ solution is shown in Figure 1.



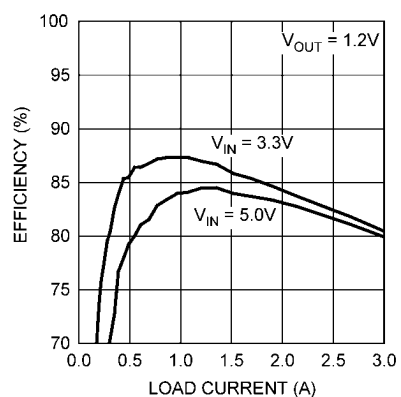
30043803

FIGURE 5. 1.2V Output Solution Optimized for Size

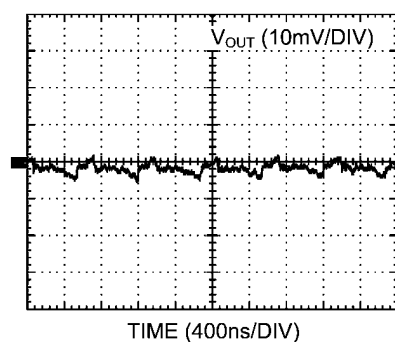
Bill of Materials (Small solution size, $V_{IN} = 5V$, $V_{OUT} = 1.2V$, $I_{OUT(MAX)} = 3A$)

Designator	Description	Part Number	Manufacturer	Qty
U1	Synchronous Buck Regulator	LM20123	National Semiconductor	1
C_{IN}	$47\text{ }\mu\text{F}$, 1206, X5R, 6.3V	C3216JB0J476M	TDK	1
C_{OUT}	$47\text{ }\mu\text{F}$, 1206, X5R, 6.3V	C3216JB0J476M	TDK	1
L	$.56\text{ }\mu\text{H}$, $30\text{m}\Omega$	LPS4018-561MLC	Coilcraft	1
R_F	$1\text{ }\Omega$, 0402	CRCW04021R0J-e3	Vishay-Dale	1
C_F	$1\text{ }\mu\text{F}$, 0402, X5R, 10V	GRM155R61A105KE15	Murata	1
C_{VCC}	$1\text{ }\mu\text{F}$, 0402, X5R, 10V	GRM155R61A105KE15	Murata	1
R_{C1}	$3.65\text{ k}\Omega$, 0402	CRCW04023652F-e3	Vishay-Dale	1
C_{C1}	2.2 nF , 0402, X7R, 25V	VJ0402Y222KXXA	Vishay-Vitramon	1
C_{SS}	33 nF , 0402, X5R, 25V	VJ0402G333KXJA	Vishay-Vitramon	1
R_{FB1}	$4.99\text{ k}\Omega$, 0402	CRCW04024992F-e3	Vishay-Dale	1
R_{FB2}	$10\text{ k}\Omega$, 0402	CRCW04021002F-e3	Vishay-Dale	1

The calculated component PCB area for this design is 64 mm^2 . The efficiency vs. I_{OUT} , output voltage ripple, and transient response are shown below for this solution.

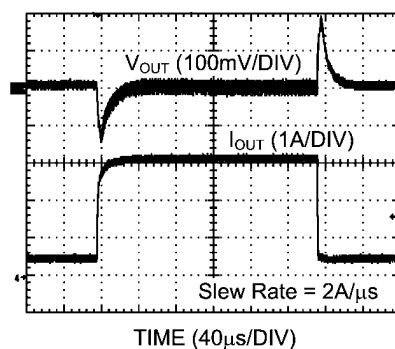


30043804

FIGURE 6. Efficiency vs I_{OUT} 

30043805

FIGURE 7. Output Voltage Ripple



30043806

FIGURE 8. Transient Response

Solution Optimized for Transient Response

To optimize the transient response the switching frequency should be as high as possible. A high switching frequency allows the crossover frequency to be maximized and the inductor size to be minimized. A small inductor permits also permits the inductor current to quickly ramp during a load step change.

INDUCTOR SELECTION

Again selecting the inductor to be sized for approximately 30% ripple current for $V_{IN} = 5V$, $V_{OUT} = 1.2V$, $f_{SW} = 1.5 MHz$, and $I_{OUT} = 3A$, the ideal inductance value can be calculated from equation 1 to be $0.68 \mu H$. Once an inductance value is calculated, an actual inductor needs to be selected based on a tradeoff between physical size, efficiency, and current carrying capability. Since the purpose of this design is to select the smallest possible inductor values smaller than $0.68 \mu H$ can be examined as long as the output current plus one-half the peak to peak ripple current does not exceed the device current limit. Examining several inductor vendors a TDK SPM6530T-R47M170 inductor was selected. This $0.47 \mu H$ inductor results in a peak-to-peak ripple current of $1.29A$ and

$1.08A$ when the converter is operating from $5V$ and $3.3V$ respectively. For optimization of the transient response, the TDK SPM6530T-R47M170 inductor offers a good balance between efficiency ($3.3 m\Omega$ DCR), size, and saturation current rating ($17A I_{SAT}$ rating).

OUTPUT CAPACITOR SELECTION

A Sanyo $470 \mu F$ POSCAP capacitor with $10 m\Omega$ of series resistance (ESR) is selected for the output capacitor to provide good transient and DC performance in a relatively small package. If desired the output voltage ripple can be further reduced by placing a $47 \mu F$ ceramic capacitor in parallel with the Sanyo POSCAP.

COMPENSATION SELECTION

The compensation network was selected using the excel design tool (available online) to give a crossover frequency of $110 kHz$. For this target crossover frequency, operating conditions, and filter components a value for C_{C1} of $0.47 nF$ and a value for R_{C1} of $57.6 k\Omega$ were selected. Since the output capacitor value and ESR are large an additional capacitor C_{C2} is recommended. For this design C_{C2} is $100pF$.

The final schematic for a $5V$ to $1.2V$ or $3.3V$ to $1.2V$ conversion is shown in Figure 1.

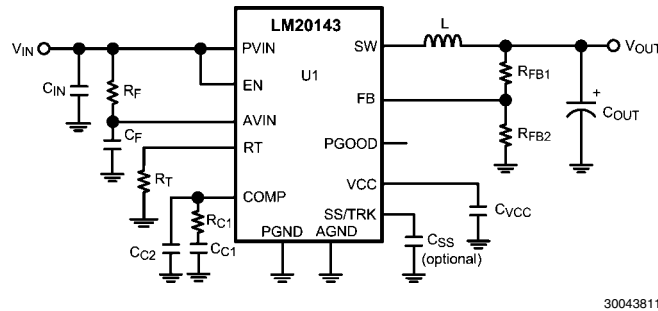
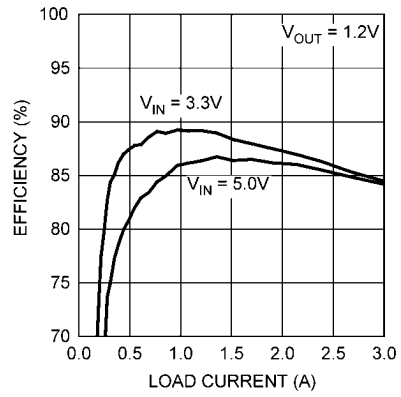


FIGURE 9. 1.2V Output Solution Optimized for Load Transients

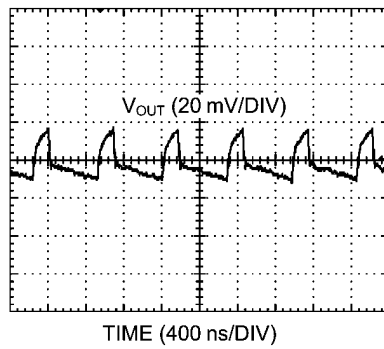
Transient Response Bill of Materials ($V_{IN} = 5V$, $V_{OUT} = 3.3V$, $I_{OUT(MAX)} = 3A$, $f_{SW} = 500 kHz$)

Designator	Description	Part Number	Manufacturer	Qty
U1	Synchronous Buck Regulator	LM20143	National Semiconductor	1
C _{IN}	47 μF , 1206, X5R, 6.3V	C3216JB0J476M	TDK	1
C _{OUT}	470 μF , D4D, 6.3V	4TPD470M	Sanyo	1
L	0.47 μH , 3.3 $m\Omega$	SPM6530T-R47M170	TDK	1
R _F	1 Ω , 0603	CRCW06031R0J-e3	Vishay-Dale	1
C _F	1 μF , 0603, X7R, 10V	GRM188R71A105KA01	Murata	1
C _{VCC}	1 μF , 0603, X7R, 10V	GRM188R71A105KA01	Murata	1
R _{C1}	57.6k Ω , 0603	CRCW06035762F-e3	Vishay-Dale	1
C _{C1}	.47nF, 0603, X7R, 25V	VJ0603Y471KXXA	Vishay-Vitramon	1
C _{C2}	100 pF, 0603, 50V, COG	GRM1885C1H101JA01	Murata	1
C _{SS}	33 nF, 0603, X7R, 25V	VJ0603Y333KXXA	Vishay-Vitramon	1
R _{FB1}	4.99 k Ω , 0603	CRCW06034992F-e3	Vishay-Dale	1
R _{FB2}	10 k Ω , 0603	CRCW06031002F-e3	Vishay-Dale	1
R _T	48.7 k Ω , 0603	CRCW06034872F-e3	Vishay-Dale	1

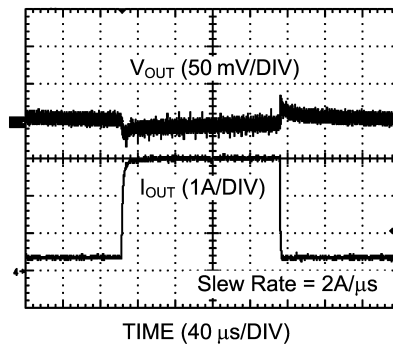
The calculated component PCB area for this design is $126 mm^2$. The efficiency vs. I_{OUT} , output voltage ripple, and transient response are shown below for this solution.



30043812

FIGURE 10. Efficiency vs I_{OUT} 

30043813

FIGURE 11. Output Voltage Ripple

30043814

FIGURE 12. Transient Response

Notes

For more National Semiconductor product information and proven design tools, visit the following Web sites at:

Products		Design Support	
Amplifiers	www.national.com/amplifiers	WEBENCH	www.national.com/webench
Audio	www.national.com/audio	Analog University	www.national.com/AU
Clock Conditioners	www.national.com/timing	App Notes	www.national.com/appnotes
Data Converters	www.national.com/adc	Distributors	www.national.com/contacts
Displays	www.national.com/displays	Green Compliance	www.national.com/quality/green
Ethernet	www.national.com/ethernet	Packaging	www.national.com/packaging
Interface	www.national.com/interface	Quality and Reliability	www.national.com/quality
LVDS	www.national.com/lvds	Reference Designs	www.national.com/refdesigns
Power Management	www.national.com/power	Feedback	www.national.com/feedback
Switching Regulators	www.national.com/switchers		
LDOs	www.national.com/ldo		
LED Lighting	www.national.com/led		
PowerWise	www.national.com/powerwise		
Serial Digital Interface (SDI)	www.national.com/sdi		
Temperature Sensors	www.national.com/tempsensors		
Wireless (PLL/VCO)	www.national.com/wireless		

THE CONTENTS OF THIS DOCUMENT ARE PROVIDED IN CONNECTION WITH NATIONAL SEMICONDUCTOR CORPORATION ("NATIONAL") PRODUCTS. NATIONAL MAKES NO REPRESENTATIONS OR WARRANTIES WITH RESPECT TO THE ACCURACY OR COMPLETENESS OF THE CONTENTS OF THIS PUBLICATION AND RESERVES THE RIGHT TO MAKE CHANGES TO SPECIFICATIONS AND PRODUCT DESCRIPTIONS AT ANY TIME WITHOUT NOTICE. NO LICENSE, WHETHER EXPRESS, IMPLIED, ARISING BY ESTOPPEL OR OTHERWISE, TO ANY INTELLECTUAL PROPERTY RIGHTS IS GRANTED BY THIS DOCUMENT.

TESTING AND OTHER QUALITY CONTROLS ARE USED TO THE EXTENT NATIONAL DEEMS NECESSARY TO SUPPORT NATIONAL'S PRODUCT WARRANTY. EXCEPT WHERE MANDATED BY GOVERNMENT REQUIREMENTS, TESTING OF ALL PARAMETERS OF EACH PRODUCT IS NOT NECESSARILY PERFORMED. NATIONAL ASSUMES NO LIABILITY FOR APPLICATIONS ASSISTANCE OR BUYER PRODUCT DESIGN. BUYERS ARE RESPONSIBLE FOR THEIR PRODUCTS AND APPLICATIONS USING NATIONAL COMPONENTS. PRIOR TO USING OR DISTRIBUTING ANY PRODUCTS THAT INCLUDE NATIONAL COMPONENTS, BUYERS SHOULD PROVIDE ADEQUATE DESIGN, TESTING AND OPERATING SAFEGUARDS.

EXCEPT AS PROVIDED IN NATIONAL'S TERMS AND CONDITIONS OF SALE FOR SUCH PRODUCTS, NATIONAL ASSUMES NO LIABILITY WHATSOEVER, AND NATIONAL DISCLAIMS ANY EXPRESS OR IMPLIED WARRANTY RELATING TO THE SALE AND/OR USE OF NATIONAL PRODUCTS INCLUDING LIABILITY OR WARRANTIES RELATING TO FITNESS FOR A PARTICULAR PURPOSE, MERCHANTABILITY, OR INFRINGEMENT OF ANY PATENT, COPYRIGHT OR OTHER INTELLECTUAL PROPERTY RIGHT.

LIFE SUPPORT POLICY

NATIONAL'S PRODUCTS ARE NOT AUTHORIZED FOR USE AS CRITICAL COMPONENTS IN LIFE SUPPORT DEVICES OR SYSTEMS WITHOUT THE EXPRESS PRIOR WRITTEN APPROVAL OF THE CHIEF EXECUTIVE OFFICER AND GENERAL COUNSEL OF NATIONAL SEMICONDUCTOR CORPORATION. As used herein:

Life support devices or systems are devices which (a) are intended for surgical implant into the body, or (b) support or sustain life and whose failure to perform when properly used in accordance with instructions for use provided in the labeling can be reasonably expected to result in a significant injury to the user. A critical component is any component in a life support device or system whose failure to perform can be reasonably expected to cause the failure of the life support device or system or to affect its safety or effectiveness.

National Semiconductor and the National Semiconductor logo are registered trademarks of National Semiconductor Corporation. All other brand or product names may be trademarks or registered trademarks of their respective holders.

Copyright© 2007 National Semiconductor Corporation

For the most current product information visit us at www.national.com



**National Semiconductor
Americas Customer
Support Center**
Email:
new.feedback@nsc.com
Tel: 1-800-272-9959

**National Semiconductor Europe
Customer Support Center**
Fax: +49 (0) 180-530-85-86
Email: europe.support@nsc.com
Deutsch Tel: +49 (0) 69 9508 6208
English Tel: +49 (0) 870 24 0 2171
Français Tel: +33 (0) 1 41 91 8790

**National Semiconductor Asia
Pacific Customer Support Center**
Email: ap.support@nsc.com

**National Semiconductor Japan
Customer Support Center**
Fax: 81-3-5639-7507
Email: jpn.feedback@nsc.com
Tel: 81-3-5639-7560