

LM3406HV Evaluation Board with 2 Wire Dimming

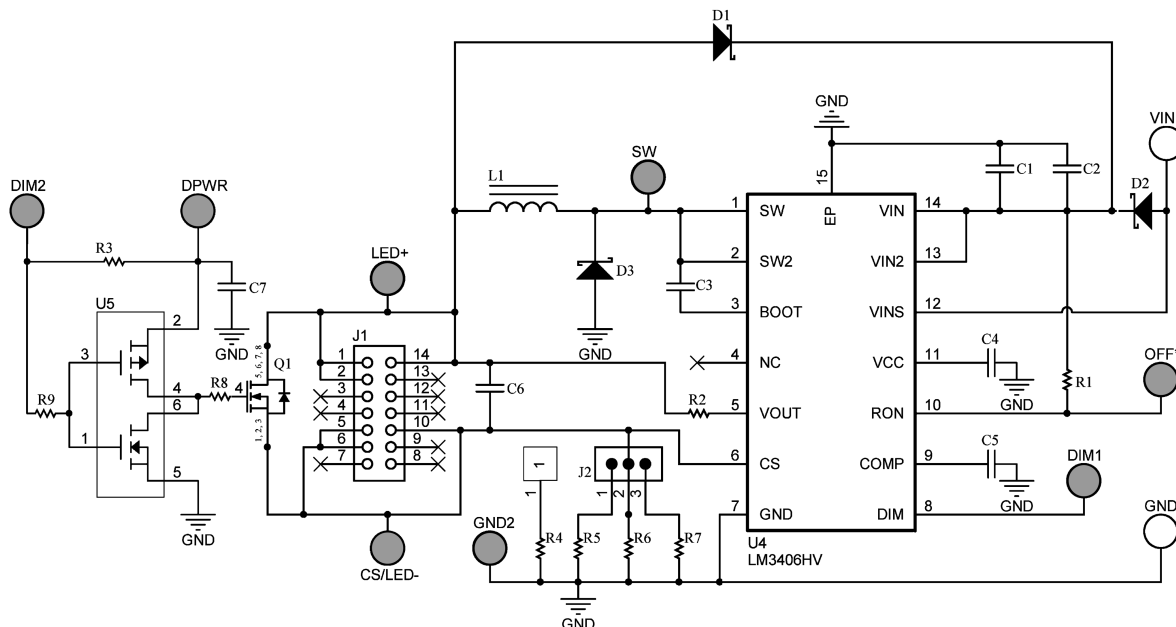
National Semiconductor
Application Note 1993
Clinton Jensen
January 18, 2010



Introduction

The LM3406HV is a buck regulator controlled current source designed to drive a series string of high power, high bright-

ness LEDs (HBLEDs) such as the Luxeon™ K2 Emitter at forward currents of up to 1.5A. The converter's output voltage adjusts as needed to maintain a constant current through the LED array.



30103301

FIGURE 1. Complete Circuit Schematic

Circuit Performance

The LM3406HV circuit and BOM that come pre-installed on the evaluation board are optimized to run from an input voltage of 24V, but the circuit can operate from a wide input voltage range of 6.0V to 75V. The current output ranges from 0.35A to 1.5A. shows the program jumper settings used to program currents of 0.35A, 0.7A, 1A, and 1.5A.

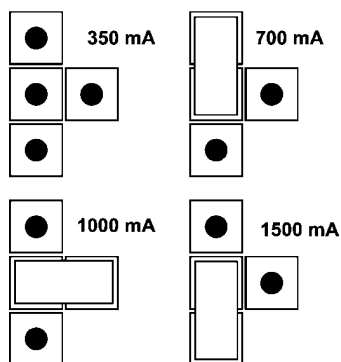
The LM3406HV is a step-down regulator with an output voltage range extending from a V_{O-MIN} of 200 mV (the reference voltage) to a V_{O-MAX} determined by the ratio of the minimum off time (typically 230 ns) to the switching frequency. The regulator can maintain the output current through any number of LEDs as long as the combined forward voltage of the array does not exceed V_{O-MAX} . V_{O-MAX} can be calculated with the following formula:

$$V_{O-MAX} = V_{IN-MIN} \times (1 - f_{SW} \times t_{OFF-MIN})$$

For example, if V_{IN} is $24V \pm 10\%$, then V_{IN-MIN} is 21.6V. For a switching frequency of 500 kHz the maximum output voltage for the converter is $21.6 \times [1 - (5 \times 10^5) \times (230 \times 10^{-9})] = 19.1V$. Output voltage is calculated with the following formula:

$$V_O = n \times V_F + 0.2V$$

Where 'n' is the number of series-connected LEDs, V_F is the forward voltage of each LED, and 0.2V represents the voltage across the current sense resistor. For InGaP LEDs (white, blue, blue-green) V_F is typically 3.5V, and with a limit of $(19.1 - 0.2) = 18.9V$ the LM3406HV could drive as many as five in series. For AlInGaP LEDs (red, orange, amber) V_F is typically



30103302

FIGURE 2. Setting Output Current, J2

2.5V, so a V_{O-MAX} of 18.9V would allow as many as seven to be driven in series.

Connecting the LED Array

The LM3406HV Evaluation Board includes test posts for connecting the LED/LED Array. Connect the open anode of the array to LED+ and the cathode of the array to CS/LED-. Keep the leads from the board to the LED(s) as short as possible to minimize inductance.

Setting the LED Current

The default forward current I_F delivered to the LED array when no program jumper is installed on **J2** is 0.35A, set by resistor **R6**. The higher LED currents are set when the program jumper puts resistors **R4**, **R5** or **R7** in parallel with **R6**. For users that wish to program a current other than one of the four default levels, or for users who want the best accuracy at a given current, the program jumper **J2** should be removed, and **R6** changed according to the following equation:

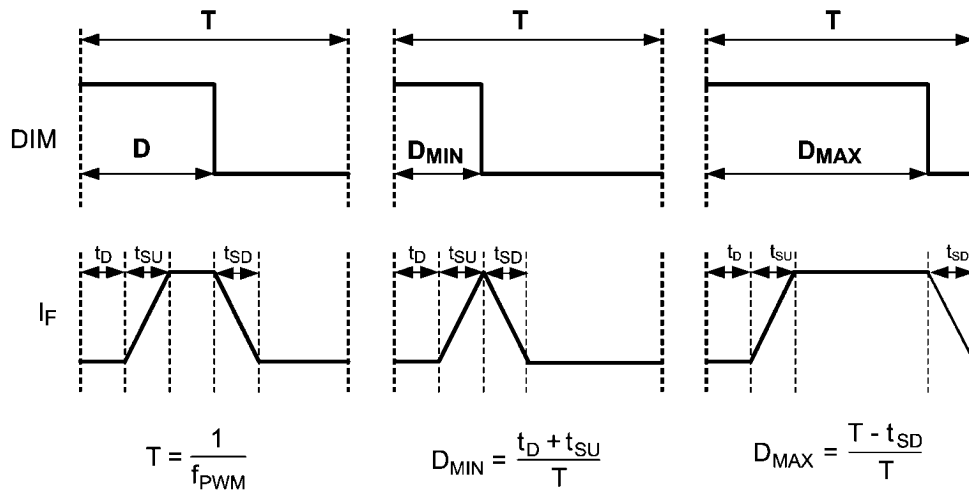
$$R_{35} = 0.2 / I_F$$

This resistor should be rated to handle the power dissipation of the LED current. For example, the closest 5% tolerance

resistor to set an LED current of 0.35A is 0.56Ω. In steady state this resistor will dissipate $(0.35^2 \times 0.56) = 69$ mW, indicating that a resistor with a 1/8W rating is more than capable of dissipating the power.

Pulse Width Modulation (PWM) Dimming

The **DIM1** terminal on the PCB provides an input for a logic-level pulse width modulation signal for dimming of the LED array. In order to fully enable and disable the LM3406HV the PWM signal should have a maximum logic low level of 0.8V and a minimum logic high level of 2.2V. Graphical representations of minimum and maximum PWM duty cycle are illustrated in [Figure 3](#). The interval t_D represents the delay from a logic high at the DIM pin to the rise in output current. The quantities t_{SU} and t_{SD} represent the time needed for the output current to slew up to steady state and slew down to zero, respectively. It is important to note that t_D is a property of the LM3406HV and remains fixed in all applications. The slew rates t_{SU} and t_{SD} are a function of the external circuit parameters V_{IN} , V_O , I_F , inductance (L) and the LM3406HV parameter $t_{OFF-MIN}$. Response times for a circuit driving three white LEDs at 1A from 24V are shown in the Typical Performance Characteristics section, but the user should test every new circuit to determine the actual PWM dimming response.



30103304

FIGURE 3. PWM Dimming Limits

The logic of **DIM1** is active low, hence the LM3406HV will deliver regulated output current when the voltage at **DIM1** is high, and the current output is disabled when the voltage at **DIM1** is low. Connecting a constant logic low will disable the output. Note that an internal pullup ensures that the LM3406HV is enabled if the DIM pin is open-circuited. The **DIM1** function disables only the power MOSFET, leaving all other circuit blocks functioning to minimize the converter response time, t_D .

The **DIM2** terminal provides a second method for PWM dimming by connecting to the gate of MOSFET **Q1** through the driver **U5**. **Q1** provides a parallel path for the LED current. Shunting the output current through a parallel MOSFET reduces the PWM dimming delays because the inductor current remains continuous, providing faster response time for higher frequency and/or greater resolution in the PWM dimming sig-

nal. The trade-off in this method is that the full current flows through **Q1** while the LED is off, resulting in lower efficiency. The LM3406HV evaluation board includes an output capacitor to reduce output current ripple which is not initially populated, but the drawback of this output capacitor if used is that it causes significant delays when using parallel MOSFET dimming. The output capacitor should be removed to take full advantage of parallel MOSFET dimming.

The logic of **DIM2** is active low, hence the regulated output current flows through the LED array when the voltage at **DIM2** is high, and the current flows through the shunt FET when the voltage at **DIM2** is low. Connecting a constant logic low to the **DIM2** will turn off the LED but will not shut down the LM3406HV. A voltage of up to 30V must be applied to the **DPWR** pin to operate **U5**.

2 Wire Input Dimming

The LM3406HV evaluation board has been designed for 2 wire dimming for systems that present a square wave input voltage for dimming purposes. A diode, D2, separates the VIN pins from the VINS pin. When the input voltage at VINS falls to 70% or less of the voltage at VIN the device stops switching and enters dim mode. The capacitors C1 and C2 hold up the voltage at the VIN pins during this time so that the LM3406HV is enabled and responds quickly when the voltage at VINS again exceeds 70% of the voltage at VIN.

Low Power Shutdown

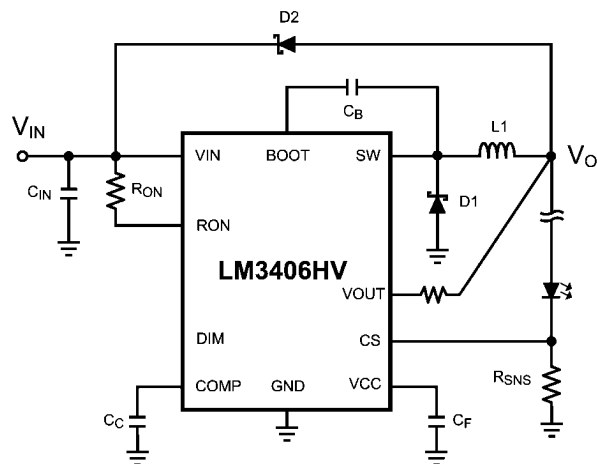
The LM3406HV can be placed into a low power shutdown (typically 240 μ A) by grounding the **OFF*** terminal. During normal operation this terminal should be left open-circuit.

Output Open Circuit

The LM3406HV will begin to operate as soon as VIN is greater than 6V and the DIM and RON pins are not grounded. If the regulator is powered and enabled but no LED array is connected, the output voltage will rise to V_{IN} . The output of the circuit is rated to 50V (beyond the maximum input voltage) and will not suffer damage, however care should be taken not to connect an LED array if the output voltage is higher than the target forward voltage of the LED array in steady state.

If the LEDs are disconnected or one of the LEDs fails open-circuit while the LM3406HV is operating, the output voltage will experience a surge as the current in the output inductor

seeks a discharge path. The output capacitor (if present) can absorb some of this energy, however circuits with little or no output capacitance can experience a voltage spike that exceeds the rating of the VOUT pin. The evaluation board uses a 10 k Ω resistor in series with the VOUT pin to limit current flowing into the pin. Alternatively, a diode connected from V_{IN} to V_O as shown in Figure 4 will clamp the spike to V_{IN} plus a diode drop and is included on the evaluation board.



30103305

FIGURE 4. Schottky Diode Protection for Open-Circuit

Bill of Materials

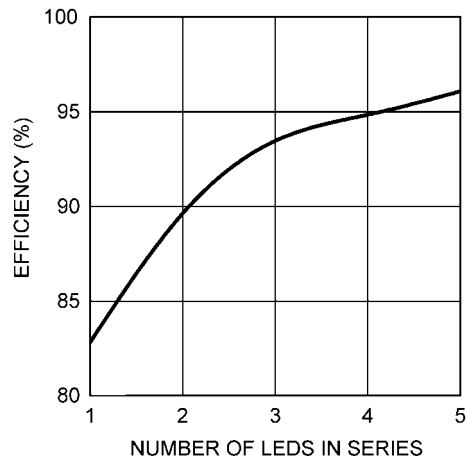
ID	Part Number	Type	Size	Parameters	Qty	Vendor
U1	LM3406HV	Buck LED Driver	eTSSOP-14	75V, 1.5A	1	NSC
U5	FDC6333C	MOSFET N-CH/P-CH	SSOT-6	30V, 2.5A	1	Fairchild Semiconductor
D1	B1100-13-F	Schottky Diode	SMA	100V, 1A	1	Diodes Inc.
D2, D3	MBRS3100T3G	Schottky Diode	SMC	100V, 3A	2	ON Semiconductor
Q1	SI4464DY-E3	MOSFET	SOIC-8	200V, 1.7A	1	Vishay
C1 C2	C5750X7R2A475M	Capacitor	2220	4.7 μ F, 100V	2	TDK
C3	GRM188R71C223K01D	Capacitor	0603	0.022 μ F, 16V	1	Murata
C4, C5, C7	GRM188R71C104K01D	Capacitor	0603	0.1 μ F, 16V	3	Murata
C6		Capacitor	1812	OPEN		
L1	MSS1038-333MLB	Inductor	MSS1038	33 μ H, 1.8A	1	Coilcraft
R1	CRCW0805143KFA	Resistor	0805	143 k Ω 1%	1	Vishay
R2	CRCW06031K00JNEA	Resistor	0603	1 k Ω 5%	1	Vishay
R3	CRCW060310K0FKA	Resistor	0603	10 k Ω 1%	1	Vishay
R4	ERJ-6RQFR30V	Resistor	0805	0.3 Ω 1%	1	Panasonic
R5	ERJ-6RQFR16V	Resistor	0805	0.16 Ω 1%	1	Panasonic
R6	ERJ-6RQFR56V	Resistor	0805	0.56 Ω 1%	1	Panasonic
R7	ERJ-6RQFR62V	Resistor	0805	0.62 Ω 1%	1	Panasonic
R8, R9	CRCW06031R00FNEA	Resistor	0603	1 Ω 1%	2	Vishay

ID	Part Number	Type	Size	Parameters	Qty	Vendor
CS/LED-, DIM1, DIM2, DPWR, GND2, LED+, OFF*, SW	1502-2	Terminal	Keystone 1598-2		8	Keystone
VIN, GND	575-8	Terminal	575-8		2	Keystone

Typical Performance Characteristics

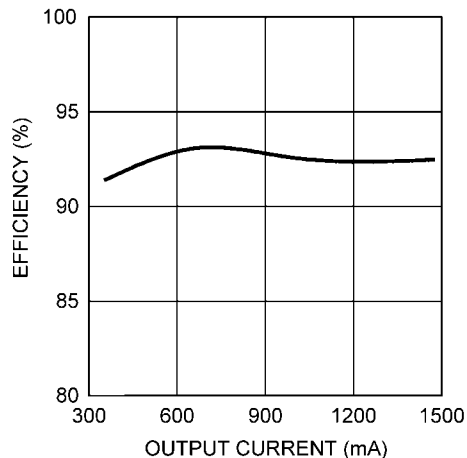
$V_{IN} = 24V$, $I_F = 1A$, $T_A = 25^\circ C$, and the load consists of three InGaN LEDs in series unless otherwise noted.

Efficiency Vs. Number of InGaN LEDs in Series



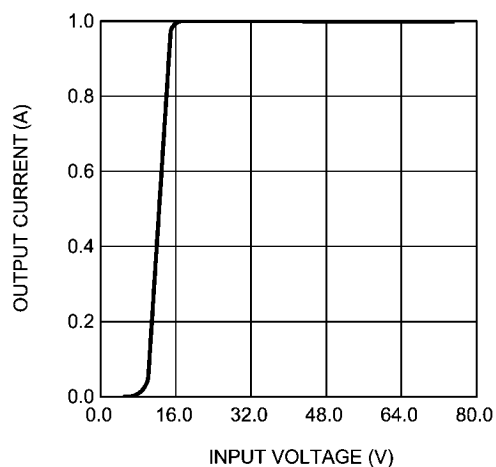
30103308

Efficiency Vs. Output Current



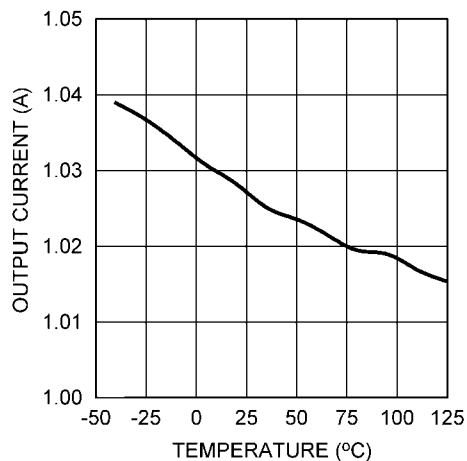
30103309

I_F vs V_{IN}



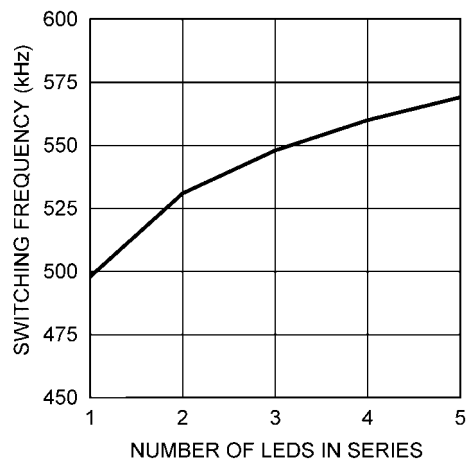
30103310

I_F vs T_A



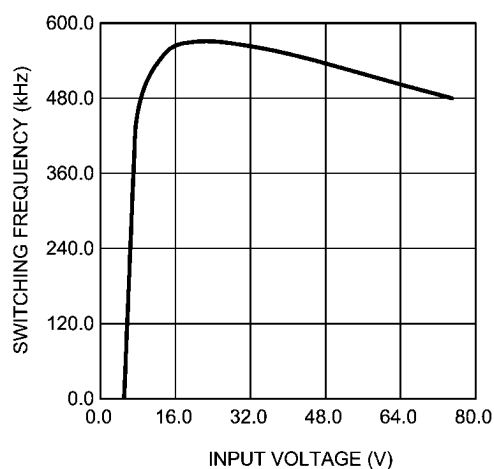
30103311

Switching Frequency vs Number of InGaN LEDs in Series



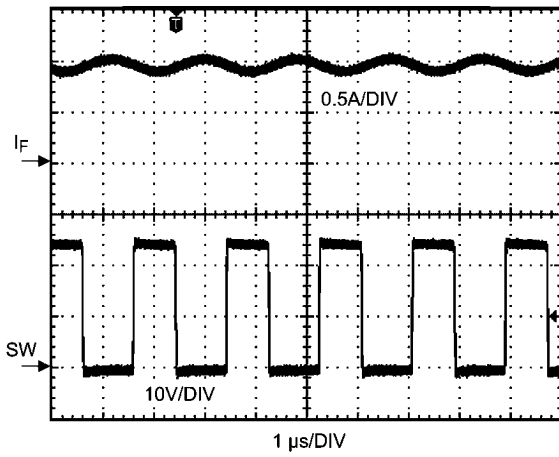
30103312

Switching Frequency vs V_{IN}



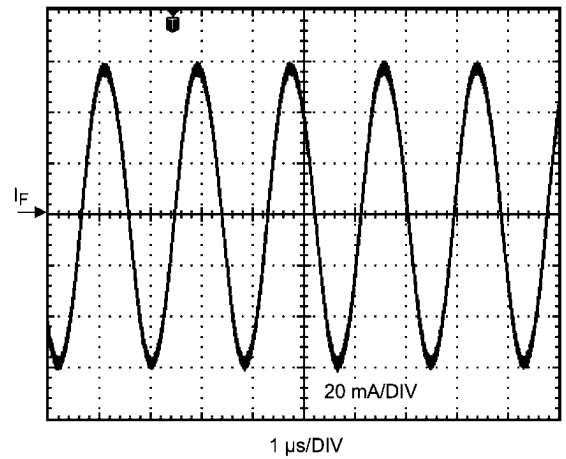
30103313

Switch Node and Output Current (DC Coupled)



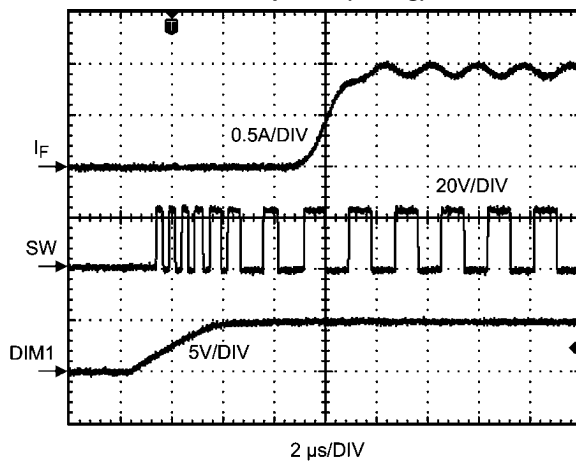
30103314

Output Current (AC Coupled)



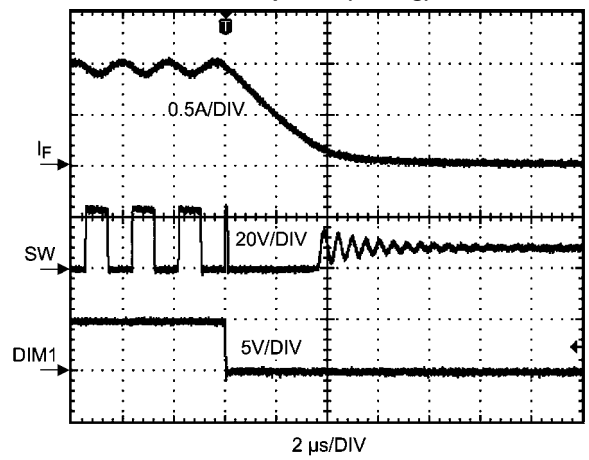
30103315

DIM1 Response (Rising)



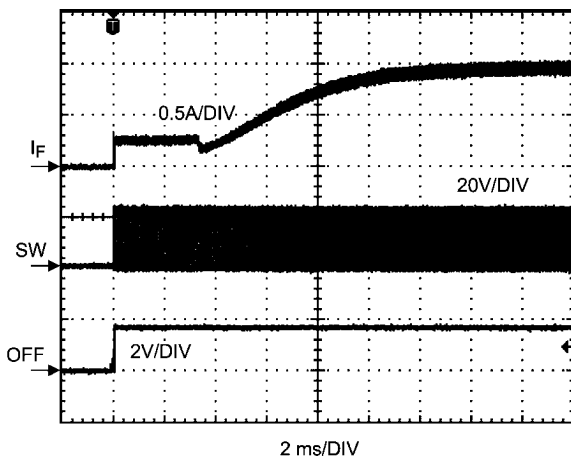
30103316

DIM1 Response (Falling)



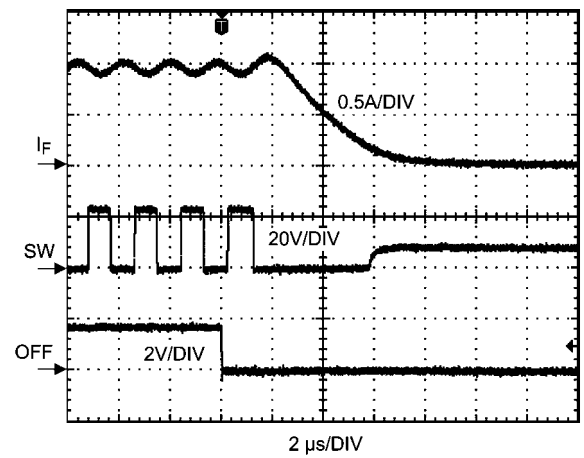
30103317

Start Up using OFF Terminal

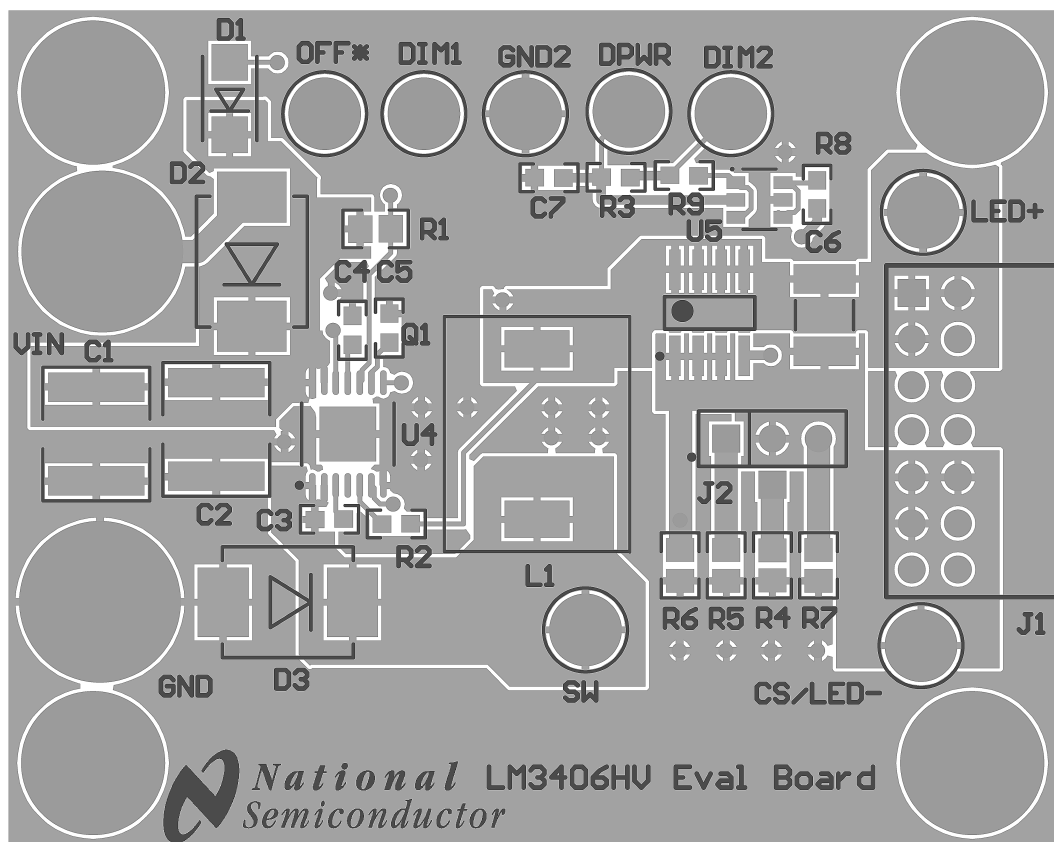


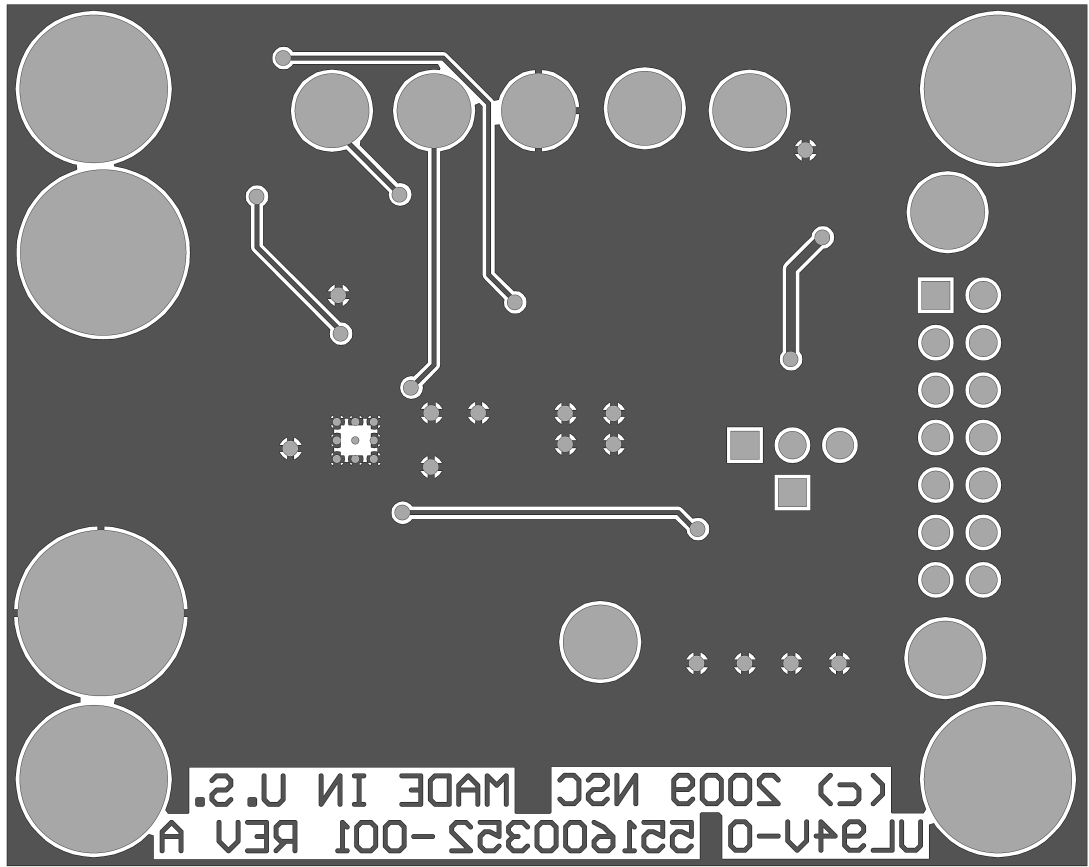
30103318

Shutdown using OFF Terminal



30103319





Bottom Layer and Bottom Overlay

30103307

Notes

Notes

For more National Semiconductor product information and proven design tools, visit the following Web sites at:
www.national.com

Products		Design Support	
Amplifiers	www.national.com/amplifiers	WEBENCH® Tools	www.national.com/webench
Audio	www.national.com/audio	App Notes	www.national.com/appnotes
Clock and Timing	www.national.com/timing	Reference Designs	www.national.com/refdesigns
Data Converters	www.national.com/adc	Samples	www.national.com/samples
Interface	www.national.com/interface	Eval Boards	www.national.com/evalboards
LVDS	www.national.com/lvds	Packaging	www.national.com/packaging
Power Management	www.national.com/power	Green Compliance	www.national.com/quality/green
Switching Regulators	www.national.com/switchers	Distributors	www.national.com/contacts
LDOs	www.national.com/ldo	Quality and Reliability	www.national.com/quality
LED Lighting	www.national.com/led	Feedback/Support	www.national.com/feedback
Voltage References	www.national.com/vref	Design Made Easy	www.national.com/easy
PowerWise® Solutions	www.national.com/powerwise	Applications & Markets	www.national.com/solutions
Serial Digital Interface (SDI)	www.national.com/sdi	Mil/Aero	www.national.com/milaero
Temperature Sensors	www.national.com/tempsensors	SolarMagic™	www.national.com/solarmagic
PLL/VCO	www.national.com/wireless	PowerWise® Design University	www.national.com/training

THE CONTENTS OF THIS DOCUMENT ARE PROVIDED IN CONNECTION WITH NATIONAL SEMICONDUCTOR CORPORATION ("NATIONAL") PRODUCTS. NATIONAL MAKES NO REPRESENTATIONS OR WARRANTIES WITH RESPECT TO THE ACCURACY OR COMPLETENESS OF THE CONTENTS OF THIS PUBLICATION AND RESERVES THE RIGHT TO MAKE CHANGES TO SPECIFICATIONS AND PRODUCT DESCRIPTIONS AT ANY TIME WITHOUT NOTICE. NO LICENSE, WHETHER EXPRESS, IMPLIED, ARISING BY ESTOPPEL OR OTHERWISE, TO ANY INTELLECTUAL PROPERTY RIGHTS IS GRANTED BY THIS DOCUMENT.

TESTING AND OTHER QUALITY CONTROLS ARE USED TO THE EXTENT NATIONAL DEEMS NECESSARY TO SUPPORT NATIONAL'S PRODUCT WARRANTY. EXCEPT WHERE MANDATED BY GOVERNMENT REQUIREMENTS, TESTING OF ALL PARAMETERS OF EACH PRODUCT IS NOT NECESSARILY PERFORMED. NATIONAL ASSUMES NO LIABILITY FOR APPLICATIONS ASSISTANCE OR BUYER PRODUCT DESIGN. BUYERS ARE RESPONSIBLE FOR THEIR PRODUCTS AND APPLICATIONS USING NATIONAL COMPONENTS. PRIOR TO USING OR DISTRIBUTING ANY PRODUCTS THAT INCLUDE NATIONAL COMPONENTS, BUYERS SHOULD PROVIDE ADEQUATE DESIGN, TESTING AND OPERATING SAFEGUARDS.

EXCEPT AS PROVIDED IN NATIONAL'S TERMS AND CONDITIONS OF SALE FOR SUCH PRODUCTS, NATIONAL ASSUMES NO LIABILITY WHATSOEVER, AND NATIONAL DISCLAIMS ANY EXPRESS OR IMPLIED WARRANTY RELATING TO THE SALE AND/OR USE OF NATIONAL PRODUCTS INCLUDING LIABILITY OR WARRANTIES RELATING TO FITNESS FOR A PARTICULAR PURPOSE, MERCHANTABILITY, OR INFRINGEMENT OF ANY PATENT, COPYRIGHT OR OTHER INTELLECTUAL PROPERTY RIGHT.

LIFE SUPPORT POLICY

NATIONAL'S PRODUCTS ARE NOT AUTHORIZED FOR USE AS CRITICAL COMPONENTS IN LIFE SUPPORT DEVICES OR SYSTEMS WITHOUT THE EXPRESS PRIOR WRITTEN APPROVAL OF THE CHIEF EXECUTIVE OFFICER AND GENERAL COUNSEL OF NATIONAL SEMICONDUCTOR CORPORATION. As used herein:

Life support devices or systems are devices which (a) are intended for surgical implant into the body, or (b) support or sustain life and whose failure to perform when properly used in accordance with instructions for use provided in the labeling can be reasonably expected to result in a significant injury to the user. A critical component is any component in a life support device or system whose failure to perform can be reasonably expected to cause the failure of the life support device or system or to affect its safety or effectiveness.

National Semiconductor and the National Semiconductor logo are registered trademarks of National Semiconductor Corporation. All other brand or product names may be trademarks or registered trademarks of their respective holders.

Copyright© 2010 National Semiconductor Corporation

For the most current product information visit us at www.national.com



**National Semiconductor
Americas Technical
Support Center**
Email: support@nsc.com
Tel: 1-800-272-9959

**National Semiconductor Europe
Technical Support Center**
Email: europe.support@nsc.com

**National Semiconductor Asia
Pacific Technical Support Center**
Email: ap.support@nsc.com

**National Semiconductor Japan
Technical Support Center**
Email: jpn.feedback@nsc.com