

LM2655 2.5A Synchronous Switching Regulator Evaluation Board

Introduction

The LM2655 is a high efficiency current -mode controlled PWM step down switching regulator. Efficiencies > 90% are obtained with synchronous operation.

Internal low ON resistance MOSFET and an external N-channel MOSFET provide the highest efficiency design. For cost saving at the expense of some efficiency, the external MOSFET can be replaced with a suitable Schottky diode. (Asynchronous operation). The IC uses patented current sensing circuitry that eliminates the need for an external current sense resistor. A programmable soft start limits start-up current surges and provides a means of sequencing multiple power supplies.

The evaluation board can be obtained by ordering part number LM2655EVAL from your local National Semiconductor sales office, or National's website at <http://www.national.com>.

Evaluation Board Design

The LM2655 evaluation board is designed to supply 2.5V at a maximum of 2.5A. The input voltage is from 4V to 14V. The board can be loaded with an SO-8 MOSFET as the lower switching element for lower switching losses than a Schottky Diode would provide by itself. The Schottky Diode, D1, improves efficiency.

Components were selected based on the design procedure in the LM2655 data sheet. The feedback resistors can be adjusted to achieve different output voltages. Use the formula:

$$R_{FB1} = R_{FB2} * (V_{out} - V_{ref}) / V_{ref}$$

where $V_{ref} = 1.238V$.

PCB layout is critical to reduce noises and ensure specified performance. See the LM2655 datasheet for layout guidelines. The artwork for this evaluation board is included in this document.

The schematic of the evaluation board is shown in *Figure 2* and the parts list is given in *Table 2*.

The LM2655 has both under voltage and over voltage shut-down protection on the output as well as under voltage lock out on the input. When the under voltage protection occurs, the output voltage can be pulled below ground by the induc-

National Semiconductor
Application Note 1215
Robert Wood
October 2002



tor. In applications that must be protected from reverse polarity, an output clamping diode can be added across C_{OUT} .

Soft Start

Soft start in the LM2655 provides delay and current ramp-up rate control at startup. Both are a function of the value of C_{SS} . After a delay, pulses begin with the current limit set to zero then ramped up to full. The total time for soft start process is estimated as:

$$T_{SS} = C_{SS} (.6V/2\mu A) + C_{SS} (2V-.6V)/10\mu A$$

Which reduces to $T_{SS} = C_{SS} (440,000)$

TABLE 1. Examples:

C_{SS}	T_{SS}
470pF	225.5μs
1nF	451μs
2.2nF	992μs
4.7nF	2.07ms

To begin with, use 4.7nF. This will assure the circuit will get up and running under full load.

If the output voltage does not attain 80% of its intended voltage when the under voltage lockout is enabled, (C_{SS} too small) the regulator will latch off. The actual time required for the output voltage to rise will depend upon the value of the inductor, output capacitor, the load on start up, and the supply voltage, as well as the value of C_{SS} . The calculated value of T_{SS} approximates the time that the under voltage and over voltage lock out circuitry will be delayed from the application of power.

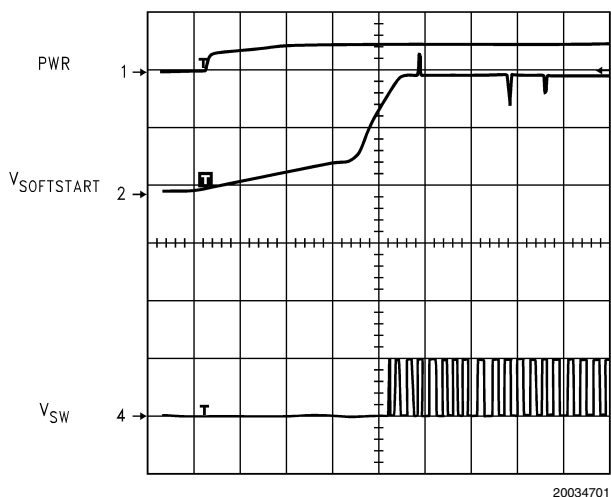
LDelay

A capacitor at L_{delay} provides an additional delay in enabling the undervoltage latch after the output voltage has reached 80% of its nominal. The value of the capacitor C_{delay} is determined by the equation:

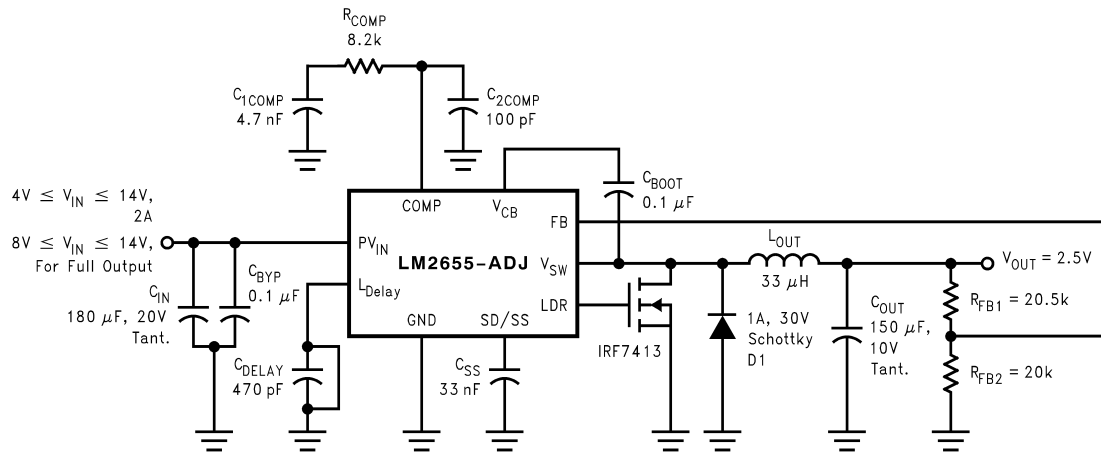
$$T_{delay} (mS) = C_{delay} (nF) * .4$$

200pF is a good start point for this component.

LDelay (Continued)


FIGURE 1. Start-Up Waveform
TABLE 2. Parts List

Component	Value	Description	Model Number
C_{OUT}	150 μ F, 10V	Output Capacitor	595D1570010 (Sprague) (Vishay)
C_{IN}	180 μ F/20V	Input Capacitor	595D1870020 (Sprague) (Vishay)
C_{DELAY}	200pF, 0805	Delay	VJ0805Y221KXAA (Vishay)
C_{BYP}	0.1 μ F, 0805	Bypass Capacitor	VJ0805Y104KXAA (Vishay)
C_{SS}	4.7nF, 0805	Soft start	VJ0805Y472KXAA (Vishay)
Q1	3A, 30V	Synchronous N-FET	IRF7413 or Si 4874 (International Rectifier or Siliconix)
D1	1A, 30V (Schottky)	Catch Diode	MBRS130L (On Semiconductor)
L_{OUT}	15 μ H, 3A	Power Inductor	MIDCOM DUS5121-150
C_{OUT}	150 μ F, 10V	Output Capacitor	595D1570010 (Sprague) (Vishay)
C_{1COMP}	4.7nF, 0805	Compensation Capacitor	VJ0805Y472KXAA (Vishay)
C_{2COMP}	100pF, 0805	Compensation Capacitor	VJ0805Y100KXAA (Vishay)
C_{BOOT}	0.1 μ F, 50V, 0805	Bootstrap Capacitor	VJ0805Y104KXAA (Vishay)
R_{COMP}	8.2k, 0805	Compensation Resistor	CRCW08058251F (Dale)
R_{FB1}	15k, 0805	Upper Feedback Resistor	CRCW08051502F (Dale)
R_{FB2}	10k, 0805	Lower Feedback Resistor	CRCW08051002F (Dale)
U1	LM2655-ADJ	Voltage Regulator	LM2655MTC-ADJ (National Semiconductor)



$$V_{OUT} = 1.23 * (R_{FB1} + R_{FB2}) / R_{FB2}$$

C_{DELAY} is shorted to turn off undervoltage protection.

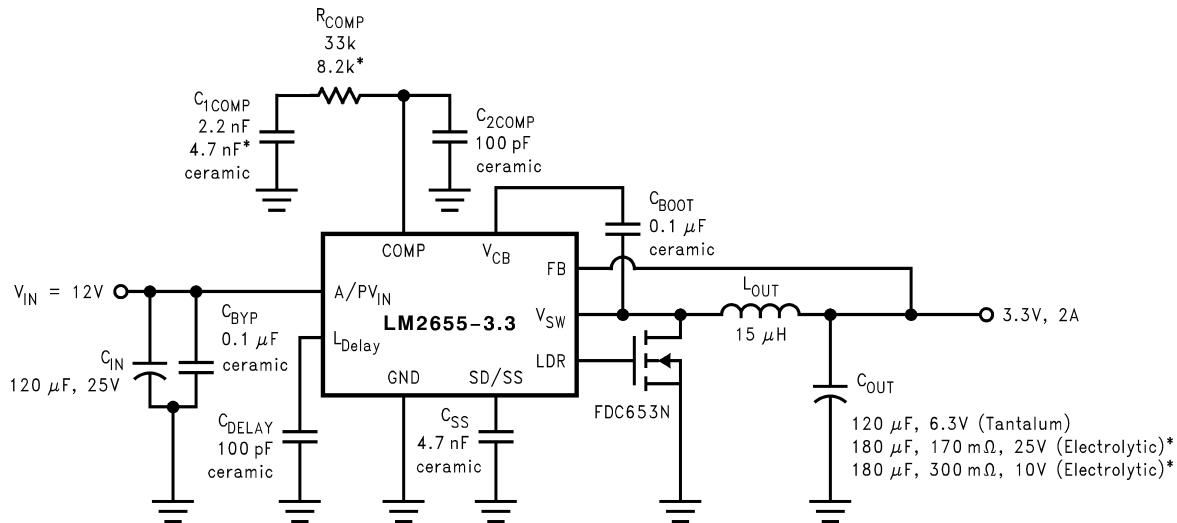
A jumper between SD/SS and ground provides on/off functionality.

Shipped in synchronous mode. Take MOSFET out to run in Asynchronous mode. Diode is large to accommodate synchronous and asynchronous operation.

D1 will limit output! Low V_{IN} ...
with 3A Diode V_{IN} Low Limit
is < 4V.

20034705

FIGURE 2. LM2655 Eval Board Schematic

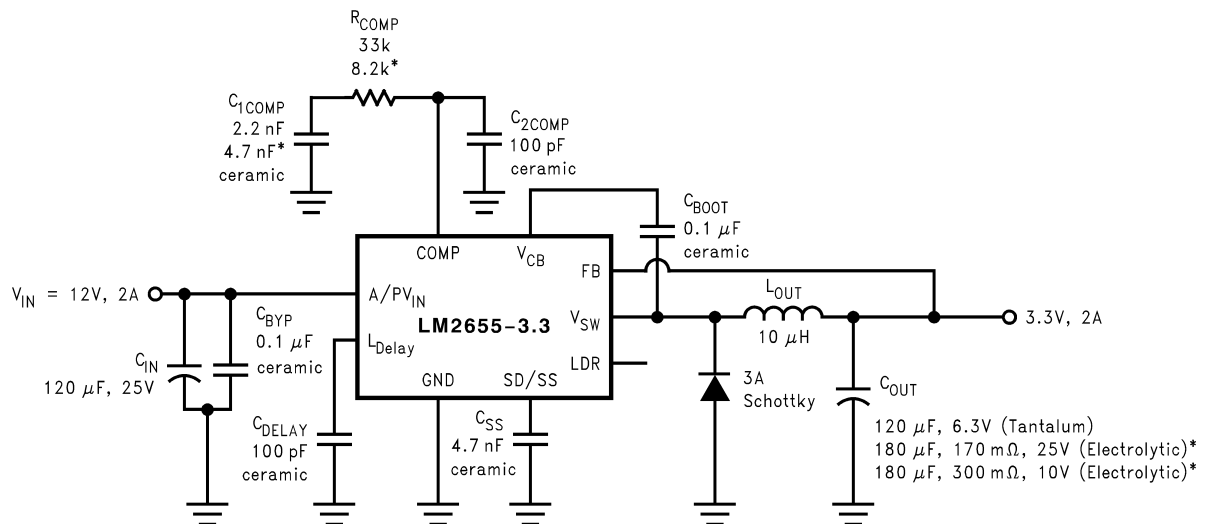


* If electrolytic capacitors are used, make compensation network $R_c = 8.2 \text{ k}\Omega$ and $C_c = 4.7 \text{ nF}$.

Efficiency $\cong 91\%$

20034703

FIGURE 3. LM2655 Buck Converter (12V to 3.3V, Synchronous)



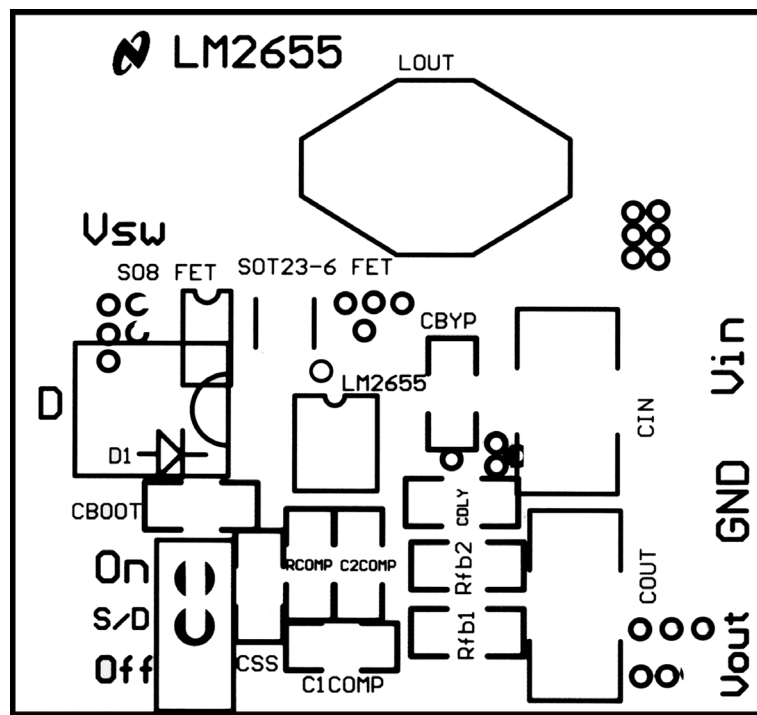
* If electrolytic capacitors are used, make compensation network $R_c = 8.2 k\Omega$ and $C_c = 4.7 nF$.

Efficiency $\cong 88\%$

20034704

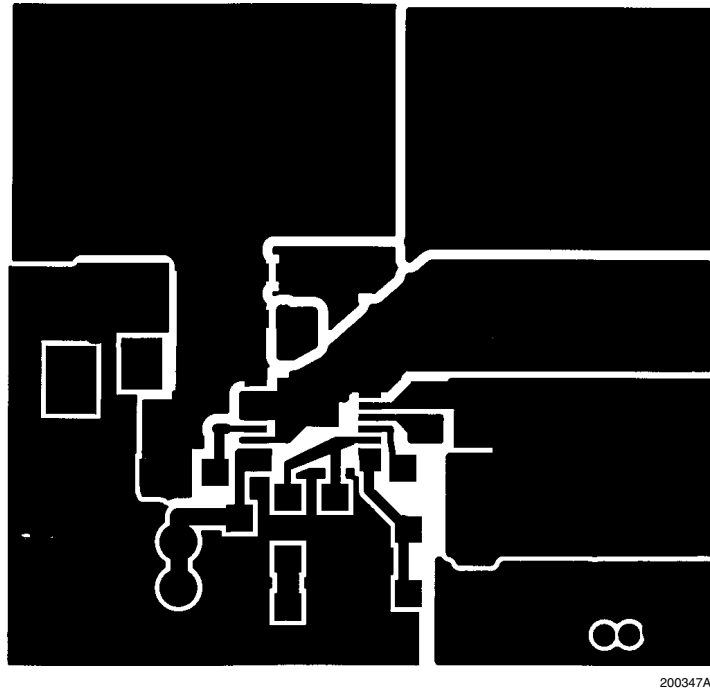
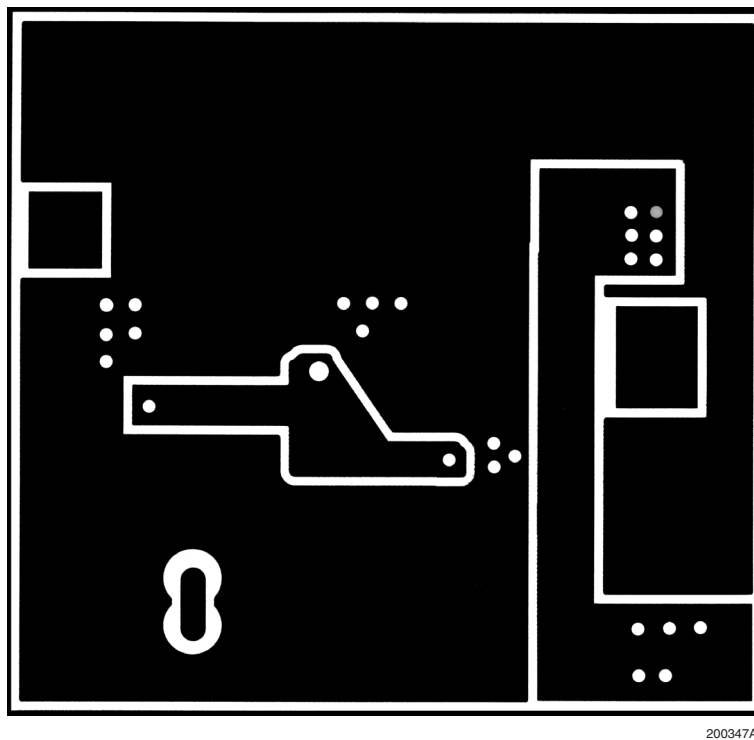
FIGURE 4. LM2655 Buck Converter (12V to 3.3V, Asynchronous)

Board Layout



200347A1

FIGURE 5. Slik Screen

Board Layout (Continued)**FIGURE 6. Top Layer****FIGURE 7. Bottom Layer**

Notes

LIFE SUPPORT POLICY

NATIONAL'S PRODUCTS ARE NOT AUTHORIZED FOR USE AS CRITICAL COMPONENTS IN LIFE SUPPORT DEVICES OR SYSTEMS WITHOUT THE EXPRESS WRITTEN APPROVAL OF THE PRESIDENT AND GENERAL COUNSEL OF NATIONAL SEMICONDUCTOR CORPORATION. As used herein:

1. Life support devices or systems are devices or systems which, (a) are intended for surgical implant into the body, or (b) support or sustain life, and whose failure to perform when properly used in accordance with instructions for use provided in the labeling, can be reasonably expected to result in a significant injury to the user.
2. A critical component is any component of a life support device or system whose failure to perform can be reasonably expected to cause the failure of the life support device or system, or to affect its safety or effectiveness.



National Semiconductor Corporation
Americas
Email: support@nsc.com

www.national.com

National Semiconductor Europe

Fax: +49 (0) 180-530 85 86
Email: europe.support@nsc.com
Deutsch Tel: +49 (0) 69 9508 6208
English Tel: +44 (0) 870 24 0 2171
Français Tel: +33 (0) 1 41 91 8790

National Semiconductor Asia Pacific Customer Response Group

Tel: 65-2544466
Fax: 65-2504466
Email: ap.support@nsc.com

National Semiconductor Japan Ltd.

Tel: 81-3-5639-7560
Fax: 81-3-5639-7507