

LM3595 Evaluation Board

National Semiconductor
Application Note 1290
May 2004



The LM3595 is a four output parallel white LED driver capable of delivering 25mA per output when driven with a fixed input voltage. The input voltage range is 3V to 5.5V and the desired output current is set through the use of one external resistor. The LM3595 has functionality for both PWM and analog brightness control. For PWM control, a PWM signal must be applied to the EN pin. A 50% duty cycle will yield 50% of the set output current. Care must be taken to make sure that the minimum on-time ($T_{ON} = 50\mu s$) is not exceeded. The following equations will ensure that minimum on-time is not violated:

$$D \times (1/f) > T_{ON}$$

$$f_{MAX} = D_{MIN} \div T_{ON}$$

For analog brightness control, the BR-ON pin must be driven high and a voltage from 0V to 3V on the BRGT pin will control the output current.

The output current under normal operation is set using the following equation:

$$\text{Eq. 1 for BR-ON} = 0V:$$

$$R_{SET} = 100 \cdot (1.22V / I_{OUT})$$

When analog brightness control is used, the output current is set using the following equation:

$$\text{Eq. 2 for BR-ON} = V_{IN}:$$

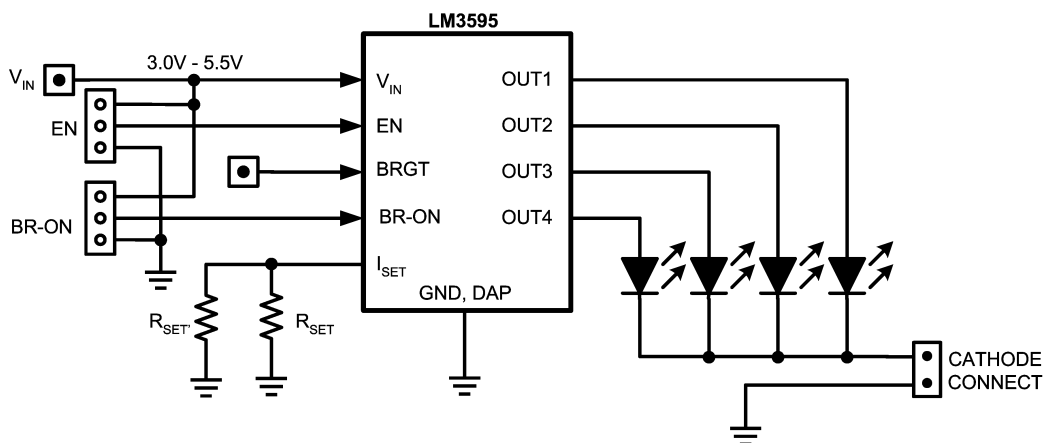
$$R_{SET} = 100 \cdot ((1.22V / I_{OUT \times (MAX)}) \cdot (V_{BRGT (MAX)} / 3V))$$

Present on the LM3595 evaluation board is a cathode connect jumper. Removing this jumper allow the output currents to be drawn through the corresponding output headers instead of through the diodes present on the board. Replacing the jumpers returns the board to normal operation.

The LM3595 comes in National's LLP-10 package. For more information regarding the LM3595, please refer to the data sheet

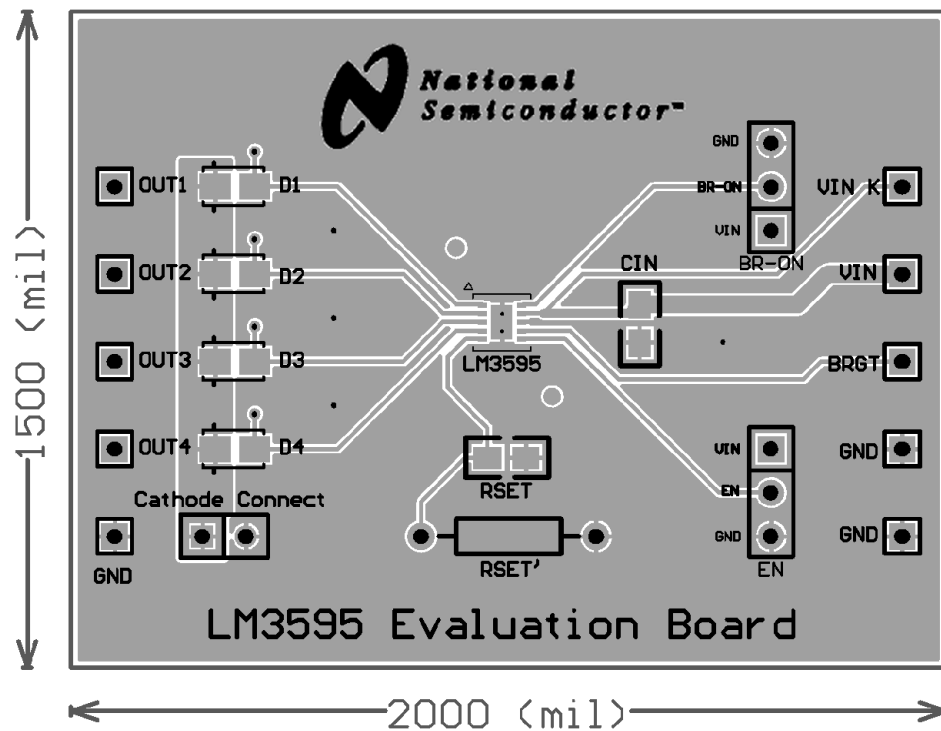
TABLE 1. Bill of Materials

Designator	Description	Manufacturer	Model Number
U1	LM3595 Parallel White LED Driver	National Semiconductor	LM3595
D1-4	White LEDs	Osram	LWM67C
C _{IN}	Input Capacitor (1μF ceramic capacitor)	TDK	C1608X5R1A105K

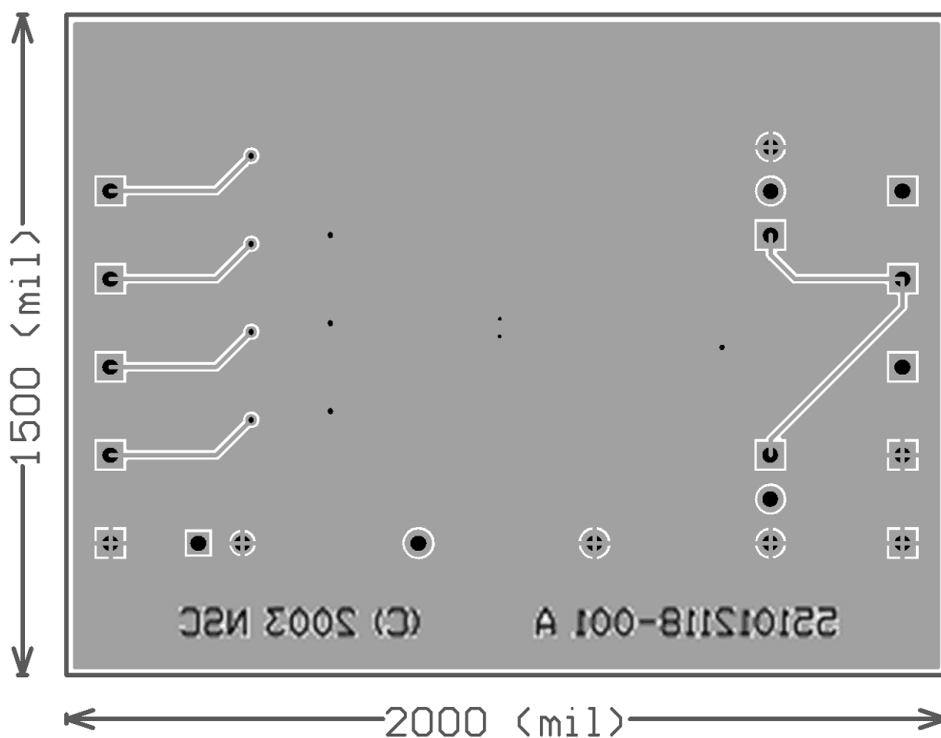


LM3595 Application Board Diagram

20076901



Typical Layout, Topside



Typical Layout, Bottomside Unmirrored

Notes

LIFE SUPPORT POLICY

NATIONAL'S PRODUCTS ARE NOT AUTHORIZED FOR USE AS CRITICAL COMPONENTS IN LIFE SUPPORT DEVICES OR SYSTEMS WITHOUT THE EXPRESS WRITTEN APPROVAL OF THE PRESIDENT AND GENERAL COUNSEL OF NATIONAL SEMICONDUCTOR CORPORATION. As used herein:

1. Life support devices or systems are devices or systems which, (a) are intended for surgical implant into the body, or (b) support or sustain life, and whose failure to perform when properly used in accordance with instructions for use provided in the labeling, can be reasonably expected to result in a significant injury to the user.
2. A critical component is any component of a life support device or system whose failure to perform can be reasonably expected to cause the failure of the life support device or system, or to affect its safety or effectiveness.

BANNED SUBSTANCE COMPLIANCE

National Semiconductor certifies that the products and packing materials meet the provisions of the Customer Products Stewardship Specification (CSP-9-111C2) and the Banned Substances and Materials of Interest Specification (CSP-9-111S2) and contain no "Banned Substances" as defined in CSP-9-111S2.



National Semiconductor
Americas Customer
Support Center
 Email: new.feedback@nsc.com
 Tel: 1-800-272-9959

www.national.com

National Semiconductor
Europe Customer Support Center
 Fax: +49 (0) 180-530 85 86
 Email: europe.support@nsc.com
 Deutsch Tel: +49 (0) 69 9508 6208
 English Tel: +44 (0) 870 24 0 2171
 Français Tel: +33 (0) 1 41 91 8790

National Semiconductor
Asia Pacific Customer
Support Center
 Email: ap.support@nsc.com

National Semiconductor
Japan Customer Support Center
 Fax: 81-3-5639-7507
 Email: jpn.feedback@nsc.com
 Tel: 81-3-5639-7560