

# LM3676 Evaluation Board

National Semiconductor  
Application Note 1536  
Jose Escobar  
October 14, 2008



## Introduction

The LM3676 evaluation board is a working demonstration of a step down DC-DC converter. This application note contains information about the evaluation board. For further information on buck converter topology, device electrical characteristics, and component selection please refer to the LM3676 datasheet.

## General Description

The LM3676 converts high input voltages to lower output voltages with high efficiency through an inductor based switching topology. The LM3676 has a mode-control pin that allows the user to select continuous Forced PWM mode over the complete load range or an intelligent Auto, PFM-PWM, mode that changes modes depending on the load. Setting the Mode pin

low ( $<0.4V$ ) places the LM3676 in Auto mode where hysteretic PFM extends the battery life through reduction of the quiescent current to  $16\mu A$  (typ.) during light loads and system standby. When the Mode pin is high ( $>1.0V$ ) the part offers superior efficiency under high load conditions ( $>100mA$ ) and the lowest output noise performance during Forced PWM. The LM3676 is available in both fixed and adjustable output voltage options ranging from  $1.0V$  to  $3.3V$  in a 8-lead non-pullback LLP package (3mm X 3mm).

## Operating Conditions

- $V_{IN}$  range:  $2.9V \leq V_{IN} \leq 5.5V$
- Recommended load current:  $0mA \leq I_{OUT} \leq 600mA$
- Ambient temperature ( $T_A$ ) range:  $-30C$  to  $+85C$
- Junction temperature ( $T_J$ ) range:  $-30C$  to  $+125C$

## Typical Application

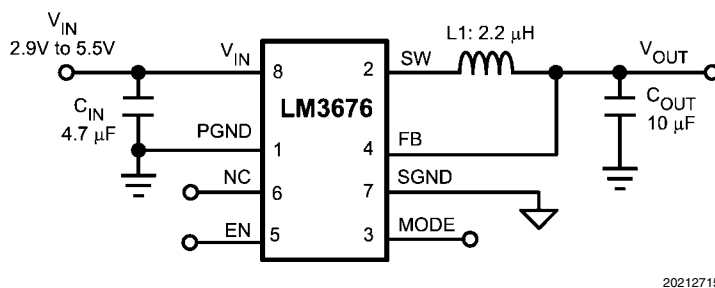


FIGURE 1. Typical Application Circuit: Fixed Voltage

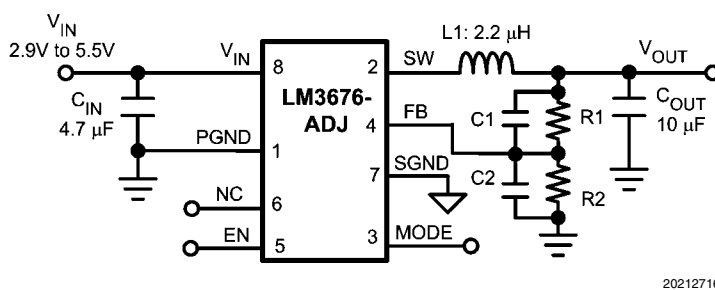


FIGURE 2. Typical Application Circuit: Adjustable Voltage

## Output Voltage Selection for LM3676SD-ADJ

The output voltage of the adjustable parts can be programmed through the resistor network connected from  $V_{OUT}$  to FB to GND. The resistor from FB to GND ( $R_2$ ) should be 200k $\Omega$  to keep the current drawn through this network small, but large enough that it is not susceptible to noise. If  $R_2$  is 200k $\Omega$ , and given the  $V_{FB}$  is 0.5V, then the current through the resistor feedback network will be 2.5 $\mu$ A. The output voltage formula is:

$$V_{OUT} = V_{FB} \left( \frac{R_1}{R_2} + 1 \right)$$

$V_{OUT}$ : output voltage (V)

$V_{FB}$ : feedback voltage (0.5V typical)

$R_1$ : feedback resistor from  $V_{OUT}$  to FB( $\Omega$ )

$R_2$ : feedback resistor from FB to GND ( $\Omega$ )

For the fixed output voltage parts the feedback resistors are internal. The bypass capacitors  $C_1$  and  $C_2$  in parallel with the feedback resistors are chosen for stable operation. Below are the formulas for  $C_1$  and  $C_2$ .

$$C_1 = \frac{1}{2 \times \pi \times R_1 \times 45 \text{ kHz}}$$

$$C_2 = \frac{1}{2 \times \pi \times R_2 \times 45 \text{ kHz}}$$

TABLE 1. LM3676-ADJ Configurations for Various  $V_{out}$  (Circuit of Figure 2)

$V_{OUT}$ (V)	$R_1$ (k $\Omega$ )	$R_2$ (k $\Omega$ )	$C_1$ (pF)	$C_2$ (pF)	L ( $\mu$ H)	$C_{IN}$ ( $\mu$ F)	$C_{OUT}$ ( $\mu$ F)
1.0	200	200	18	None	2.2	4.7	10
1.1	191	158	18	None	2.2	4.7	10
1.2	280	200	12	None	2.2	4.7	10
1.5	357	178	10	None	2.2	4.7	10
1.6	442	200	8.2	None	2.2	4.7	10
1.7	432	178	8.2	None	2.2	4.7	10
1.8	464	178	8.2	None	2.2	4.7	10
1.875	523	191	6.8	None	2.2	4.7	10
2.5	402	100	8.2	None	2.2	4.7	10
2.8	464	100	8.2	33	2.2	4.7	10
3.3	562	100	6.8	33	2.2	4.7	10

## Powering the LM3676 for Bench Measurement

When powering the LM3676 with a bench power supply, it is recommended to place a 100 $\mu$ F tantalum capacitor across the VIN and GND supply terminals of the bench power supply. This capacitor will reduce the input spike caused by the power

supply and long power cables. The combination of the power supply and inductance within the power cables produce a large voltage spike that may damage the device. In addition, consideration must given to the enable pin of the device. The enable should never be taken high, until minimum guaranteed operating voltage of 2.7V is reached. The enable pin should also never exceed the input voltage.

## Connection Diagram and Package Mark Information

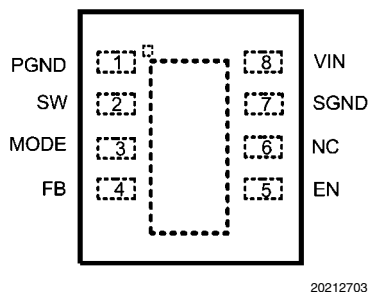
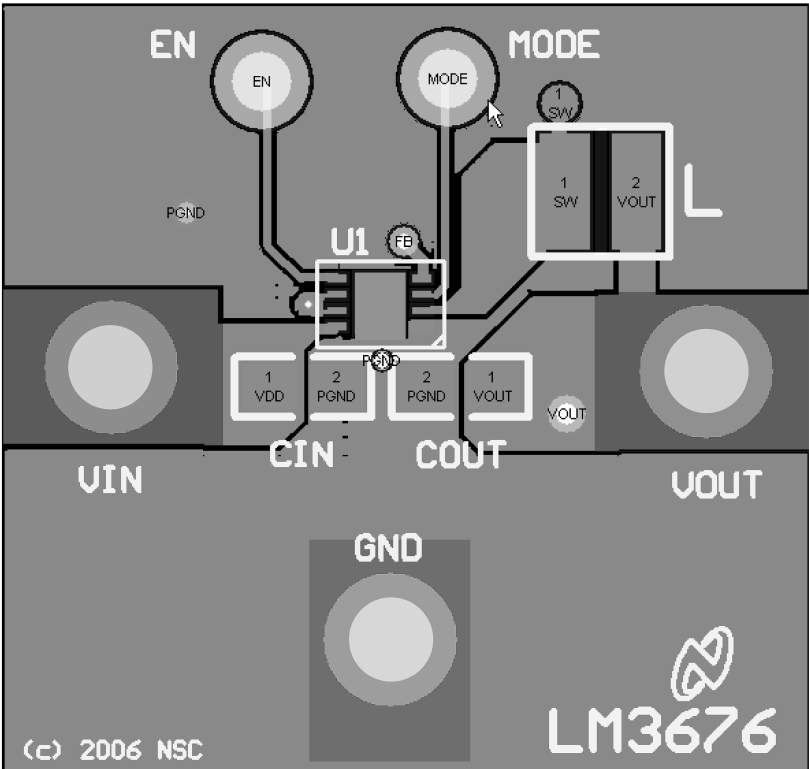


FIGURE 3. LLP, Top View

## Pin Descriptions (8-lead Non-Pullback LLP Package)

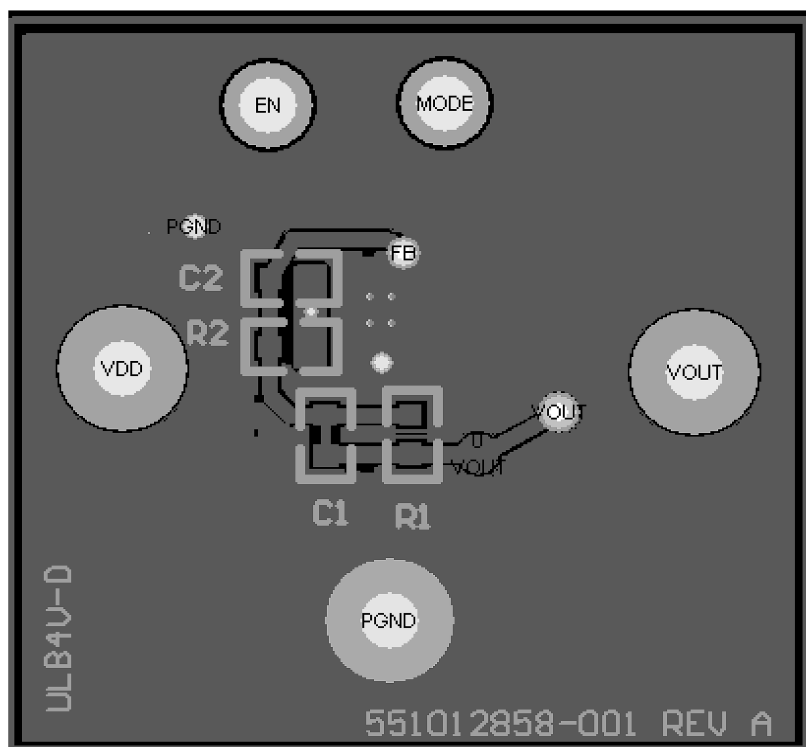
Pin #	Name	Description
1	PGND	Power supply input.
2	SW	Switching node connection to the internal PFET switch and NFET synchronous rectifier.
3	MODE	Mode Control Pin: > 1.0V selects continuous PWM mode ; < 0.4V selects Auto (PFM-PWM) mode. Do not leave this pin floating.
4	FB	Feedback analog input. Connect directly to the output filter capacitor for fixed voltage versions. For adjustable version external resistor dividers are required (Figure 2). The internal resistor dividers are disabled for the adjustable version.
5	EN	Enable pin. The device is in shutdown mode when voltage to this pin is <0.4V and enabled when >1.0V. Do not leave this pin floating.
6	NC	Not Connected. Keep Pin floating
7	SGND	Signal Ground Pin.
8	VIN	Power Supply input. Connect to the input filter capacitor (Figure 1).

Evaluation Board Layout



20212717

FIGURE 4. Top Layer (LLP-8 pin)



20212723

FIGURE 5. Bottom Layer (LLP-8 pin)

## BOM For Common Configurations

	Manufacture	Manufacture #	Description
<b>LM3676SD - 3.3V ADJUSTABLE</b>			
C1 (input C)	TDK	C2012XR0J475K	4.7 $\mu$ F, 6.3V, 0805, 10%
C2 (output C)	TDK	C2012X5R0J106K	10 $\mu$ F, 6.3V, 0805, 10%
L1 (inductor)	Coilcraft	DO3314-222MX	2.2 $\mu$ H inductor, 1.6A sat
R1 ( $V_{OUT}$ to $V_{FB}$ )	Vishay	CRCW06035623F	562k $\Omega$ , 0603, 1%
R2 ( $V_{FB}$ to GND)	Vishay	CRCW06031003F	100k $\Omega$ , 0603, 1%
C3 ( $V_{OUT}$ to $V_{FB}$ )	Vishay	VJ0603A6R8KXAA	6.8pF, 0603, 10%
C4 ( $V_{FB}$ to GND)	Vishay	VJ0603A330KXAA	33pF, 0603, 10%
$V_{IN}$ banana jack - red	Johnson Components	108-0902-001	connector, insulated banana jack (red)
$V_{OUT}$ banana jack - yellow	Johnson Components	108-0907-001	connector, insulated banana jack (yellow)
GND banana jack - black	Johnson Components	108-0903-001	connector, insulated banana jack (black)
Post for EN	Turrent	1573-2	Upright post from eval board
Post for $V_{IN}$	Turrent	1502-2	Upright post from eval board
Post for $V_{OUT}$	Turrent	1502-2	Upright post from eval board
Post for GND	Turrent	1502-2	Upright post from eval board

# Notes

For more National Semiconductor product information and proven design tools, visit the following Web sites at:

Products		Design Support	
Amplifiers	<a href="http://www.national.com/amplifiers">www.national.com/amplifiers</a>	WEBENCH	<a href="http://www.national.com/webench">www.national.com/webench</a>
Audio	<a href="http://www.national.com/audio">www.national.com/audio</a>	Analog University	<a href="http://www.national.com/AU">www.national.com/AU</a>
Clock Conditioners	<a href="http://www.national.com/timing">www.national.com/timing</a>	App Notes	<a href="http://www.national.com/appnotes">www.national.com/appnotes</a>
Data Converters	<a href="http://www.national.com/adac">www.national.com/adac</a>	Distributors	<a href="http://www.national.com/contacts">www.national.com/contacts</a>
Displays	<a href="http://www.national.com/displays">www.national.com/displays</a>	Green Compliance	<a href="http://www.national.com/quality/green">www.national.com/quality/green</a>
Ethernet	<a href="http://www.national.com/ethernet">www.national.com/ethernet</a>	Packaging	<a href="http://www.national.com/packaging">www.national.com/packaging</a>
Interface	<a href="http://www.national.com/interface">www.national.com/interface</a>	Quality and Reliability	<a href="http://www.national.com/quality">www.national.com/quality</a>
LVDS	<a href="http://www.national.com/lvds">www.national.com/lvds</a>	Reference Designs	<a href="http://www.national.com/refdesigns">www.national.com/refdesigns</a>
Power Management	<a href="http://www.national.com/power">www.national.com/power</a>	Feedback	<a href="http://www.national.com/feedback">www.national.com/feedback</a>
Switching Regulators	<a href="http://www.national.com/switchers">www.national.com/switchers</a>		
LDOs	<a href="http://www.national.com/ldo">www.national.com/ldo</a>		
LED Lighting	<a href="http://www.national.com/led">www.national.com/led</a>		
PowerWise	<a href="http://www.national.com/powerwise">www.national.com/powerwise</a>		
Serial Digital Interface (SDI)	<a href="http://www.national.com/sdi">www.national.com/sdi</a>		
Temperature Sensors	<a href="http://www.national.com/tempsensors">www.national.com/tempsensors</a>		
Wireless (PLL/VCO)	<a href="http://www.national.com/wireless">www.national.com/wireless</a>		

THE CONTENTS OF THIS DOCUMENT ARE PROVIDED IN CONNECTION WITH NATIONAL SEMICONDUCTOR CORPORATION ("NATIONAL") PRODUCTS. NATIONAL MAKES NO REPRESENTATIONS OR WARRANTIES WITH RESPECT TO THE ACCURACY OR COMPLETENESS OF THE CONTENTS OF THIS PUBLICATION AND RESERVES THE RIGHT TO MAKE CHANGES TO SPECIFICATIONS AND PRODUCT DESCRIPTIONS AT ANY TIME WITHOUT NOTICE. NO LICENSE, WHETHER EXPRESS, IMPLIED, ARISING BY ESTOPPEL OR OTHERWISE, TO ANY INTELLECTUAL PROPERTY RIGHTS IS GRANTED BY THIS DOCUMENT.

TESTING AND OTHER QUALITY CONTROLS ARE USED TO THE EXTENT NATIONAL DEEMS NECESSARY TO SUPPORT NATIONAL'S PRODUCT WARRANTY. EXCEPT WHERE MANDATED BY GOVERNMENT REQUIREMENTS, TESTING OF ALL PARAMETERS OF EACH PRODUCT IS NOT NECESSARILY PERFORMED. NATIONAL ASSUMES NO LIABILITY FOR APPLICATIONS ASSISTANCE OR BUYER PRODUCT DESIGN. BUYERS ARE RESPONSIBLE FOR THEIR PRODUCTS AND APPLICATIONS USING NATIONAL COMPONENTS. PRIOR TO USING OR DISTRIBUTING ANY PRODUCTS THAT INCLUDE NATIONAL COMPONENTS, BUYERS SHOULD PROVIDE ADEQUATE DESIGN, TESTING AND OPERATING SAFEGUARDS.

EXCEPT AS PROVIDED IN NATIONAL'S TERMS AND CONDITIONS OF SALE FOR SUCH PRODUCTS, NATIONAL ASSUMES NO LIABILITY WHATSOEVER, AND NATIONAL DISCLAIMS ANY EXPRESS OR IMPLIED WARRANTY RELATING TO THE SALE AND/OR USE OF NATIONAL PRODUCTS INCLUDING LIABILITY OR WARRANTIES RELATING TO FITNESS FOR A PARTICULAR PURPOSE, MERCHANTABILITY, OR INFRINGEMENT OF ANY PATENT, COPYRIGHT OR OTHER INTELLECTUAL PROPERTY RIGHT.

## LIFE SUPPORT POLICY

**NATIONAL'S PRODUCTS ARE NOT AUTHORIZED FOR USE AS CRITICAL COMPONENTS IN LIFE SUPPORT DEVICES OR SYSTEMS WITHOUT THE EXPRESS PRIOR WRITTEN APPROVAL OF THE CHIEF EXECUTIVE OFFICER AND GENERAL COUNSEL OF NATIONAL SEMICONDUCTOR CORPORATION.** As used herein:

Life support devices or systems are devices which (a) are intended for surgical implant into the body, or (b) support or sustain life and whose failure to perform when properly used in accordance with instructions for use provided in the labeling can be reasonably expected to result in a significant injury to the user. A critical component is any component in a life support device or system whose failure to perform can be reasonably expected to cause the failure of the life support device or system or to affect its safety or effectiveness.

National Semiconductor and the National Semiconductor logo are registered trademarks of National Semiconductor Corporation. All other brand or product names may be trademarks or registered trademarks of their respective holders.

Copyright© 2008 National Semiconductor Corporation

For the most current product information visit us at [www.national.com](http://www.national.com)



**National Semiconductor  
Americas Technical  
Support Center**  
Email: [support@nsc.com](mailto:support@nsc.com)  
Tel: 1-800-272-9959

**National Semiconductor Europe  
Technical Support Center**  
Email: [europe.support@nsc.com](mailto:europe.support@nsc.com)  
German Tel: +49 (0) 180 5010 771  
English Tel: +44 (0) 870 850 4288

**National Semiconductor Asia  
Pacific Technical Support Center**  
Email: [ap.support@nsc.com](mailto:ap.support@nsc.com)

**National Semiconductor Japan  
Technical Support Center**  
Email: [jpn.feedback@nsc.com](mailto:jpn.feedback@nsc.com)