

# LMV243 Single-Channel, Quad-Band GSM Power Controller Evaluation Board

National Semiconductor  
Application Note 1805  
Gerrit de Wagt  
April 25, 2008



## General Description

This board can be used to evaluate National Semiconductor's LMV243 Single-Channel, Quad-Band GSM Power Controller. The device is intended for use within an RF transmit power control loop in GSM mobile phones and supports GaAs HBT and bipolar RF single supply power amplifiers (PA's). The key value is its immunity to changes in the PA gain control function. It contains a 50 dB logarithmic amplifier detector and interfaces directly with the directional coupler. The operating frequency range of the device is from 450 MHz to 2 GHz.

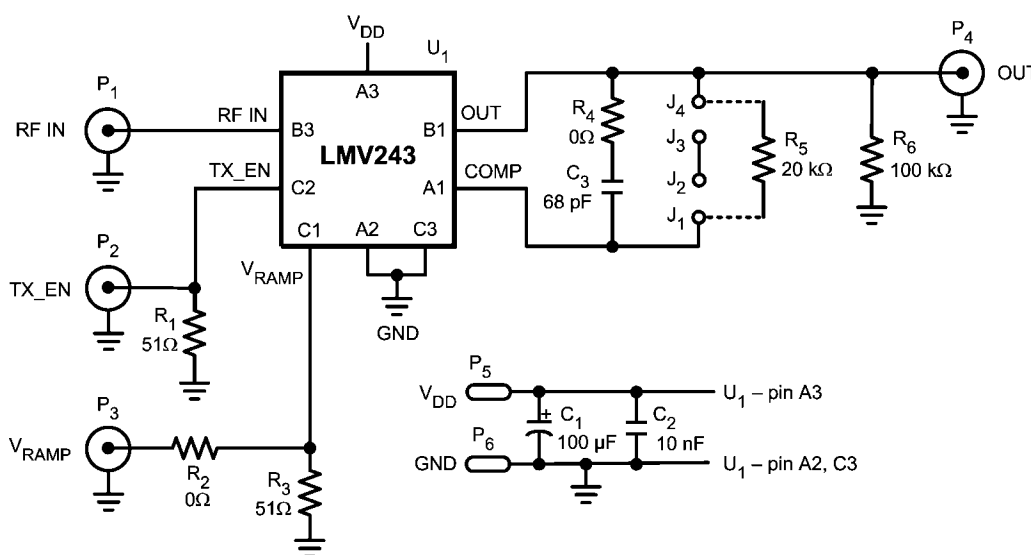
## Basic Operation

The LMV243 RF power controller provides an accurate temperature compensated DC output voltage (with a negative slope) that relates linearly to the applied RF input power in dBm. To evaluate the LMV243 in a simple straight forward way, the control loop is formed by the LMV243 and resistor

$R_5$  instead of LMV243, PA, and a directional coupler. In an actual closed loop TX control system, including a PA, resistor  $R_5$  should be removed. In an open loop measurement configuration the output voltage ramps down with increasing input power from a maximum voltage defined by  $V_{RAMP}$ . This maximum output voltage equals  $V_{OUT} = V_{RAMP} * R_5 / R_{RAMP}$ , where  $1/R_{RAMP}$  is the transconductance defined in the datasheet.

The single supply voltage ranges from 2.7V to 3.3V and can be applied through connectors  $P_5$  and  $P_6$ . The input interface consists of the RF input ( $P_1$ ), a ramp voltage applied through  $P_3$  and a digital input TX\_EN ( $P_2$ ) to perform the function "Shutdown/Transmit Enable." The device will be active in the case TX\_EN = HI, otherwise, the device is in a low power consumption shutdown mode. During shutdown the output will be in high impedance mode (tristate). A single external RC combination is used to provide stable operations that accommodates individual PA characteristics. This is done with resistor  $R_4$  and capacitor  $C_3$ .

## Schematic

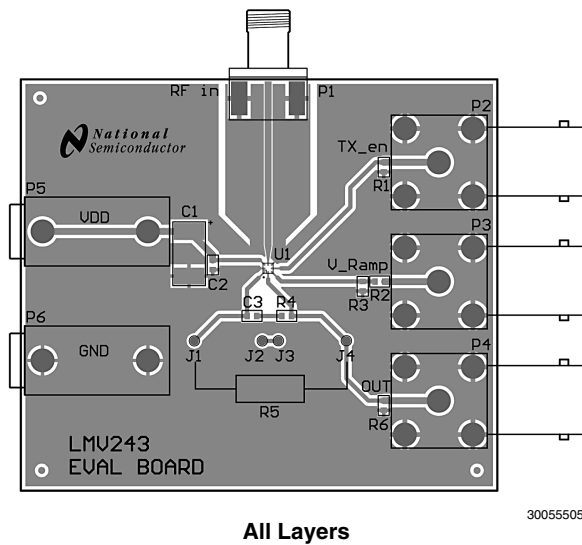


30055501

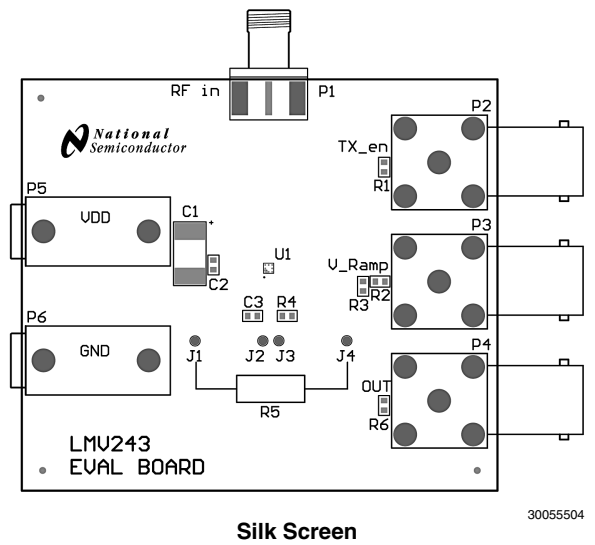
FIGURE 1. Schematic of the Evaluation Board

## Layout

The Layout of the evaluation board is given in *Figure 2*.



All Layers



Silk Screen

FIGURE 2. Layout of the Evaluation Board

## Bill of Materials

The Bill of Material (BOM) of the evaluation board is given in the table below.

Designator	Description	Comment
C1	Case_D Capacitor	100 $\mu$ F
C2	0603 Capacitor	10 nF
C3	0603 Capacitor	68 pF
P1	Connector	SMA
P2, P3, P4	Connector	BNC
P5, P6	Connector	Banana
R1, R3	0603 Resistor	51 $\Omega$
R2, R4	0603 Resistor	0 $\Omega$
R5	Axial Resistor	20 k $\Omega$
R6	0603 Resistor	100 k $\Omega$
U1	microSMD	LMV243BL

## Measurement Procedure

The performance of the LMV243 can be measured with the setup shown in *Figure 3*.

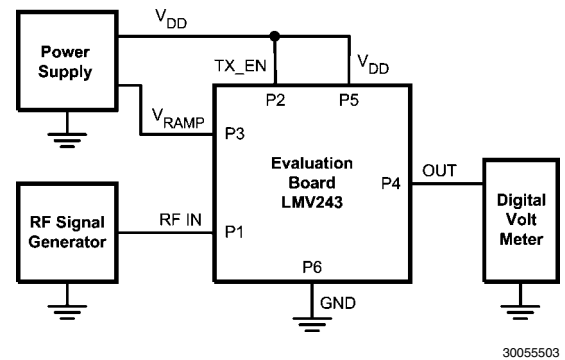
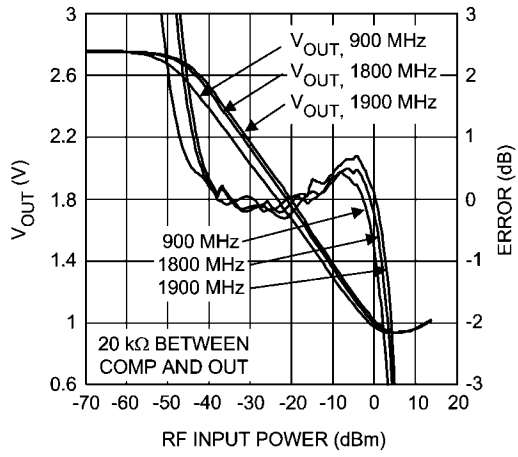


FIGURE 3. Measurement Setup

In this measurement example a supply voltage of 2.8V is applied by the power supply. The LMV243 is set in active mode by connecting TX\_EN (P<sub>2</sub>) to V<sub>DD</sub>, which is 2.8V. V<sub>RAMP</sub> is set to 1.4V. An RF signal is applied by the RF generator to connector P<sub>1</sub>. The RF power is swept from -70 dBm to +16 dBm. The resulting output voltage is measured with a multimeter connected to P<sub>4</sub>.

## Measurement Results

*Figure 4* shows the output voltage and the log conformance error versus the applied RF power. The RF power is swept for three different frequencies.



30055514

**FIGURE 4. Frequency Response**

# Notes

For more National Semiconductor product information and proven design tools, visit the following Web sites at:

Products		Design Support	
Amplifiers	<a href="http://www.national.com/amplifiers">www.national.com/amplifiers</a>	WEBENCH	<a href="http://www.national.com/webench">www.national.com/webench</a>
Audio	<a href="http://www.national.com/audio">www.national.com/audio</a>	Analog University	<a href="http://www.national.com/AU">www.national.com/AU</a>
Clock Conditioners	<a href="http://www.national.com/timing">www.national.com/timing</a>	App Notes	<a href="http://www.national.com/appnotes">www.national.com/appnotes</a>
Data Converters	<a href="http://www.national.com/adc">www.national.com/adc</a>	Distributors	<a href="http://www.national.com/contacts">www.national.com/contacts</a>
Displays	<a href="http://www.national.com/displays">www.national.com/displays</a>	Green Compliance	<a href="http://www.national.com/quality/green">www.national.com/quality/green</a>
Ethernet	<a href="http://www.national.com/ethernet">www.national.com/ethernet</a>	Packaging	<a href="http://www.national.com/packaging">www.national.com/packaging</a>
Interface	<a href="http://www.national.com/interface">www.national.com/interface</a>	Quality and Reliability	<a href="http://www.national.com/quality">www.national.com/quality</a>
LVDS	<a href="http://www.national.com/lvds">www.national.com/lvds</a>	Reference Designs	<a href="http://www.national.com/refdesigns">www.national.com/refdesigns</a>
Power Management	<a href="http://www.national.com/power">www.national.com/power</a>	Feedback	<a href="http://www.national.com/feedback">www.national.com/feedback</a>
Switching Regulators	<a href="http://www.national.com/switchers">www.national.com/switchers</a>		
LDOs	<a href="http://www.national.com/ldo">www.national.com/ldo</a>		
LED Lighting	<a href="http://www.national.com/led">www.national.com/led</a>		
PowerWise	<a href="http://www.national.com/powerwise">www.national.com/powerwise</a>		
Serial Digital Interface (SDI)	<a href="http://www.national.com/sdi">www.national.com/sdi</a>		
Temperature Sensors	<a href="http://www.national.com/tempsensors">www.national.com/tempsensors</a>		
Wireless (PLL/VCO)	<a href="http://www.national.com/wireless">www.national.com/wireless</a>		

THE CONTENTS OF THIS DOCUMENT ARE PROVIDED IN CONNECTION WITH NATIONAL SEMICONDUCTOR CORPORATION ("NATIONAL") PRODUCTS. NATIONAL MAKES NO REPRESENTATIONS OR WARRANTIES WITH RESPECT TO THE ACCURACY OR COMPLETENESS OF THE CONTENTS OF THIS PUBLICATION AND RESERVES THE RIGHT TO MAKE CHANGES TO SPECIFICATIONS AND PRODUCT DESCRIPTIONS AT ANY TIME WITHOUT NOTICE. NO LICENSE, WHETHER EXPRESS, IMPLIED, ARISING BY ESTOPPEL OR OTHERWISE, TO ANY INTELLECTUAL PROPERTY RIGHTS IS GRANTED BY THIS DOCUMENT.

TESTING AND OTHER QUALITY CONTROLS ARE USED TO THE EXTENT NATIONAL DEEMS NECESSARY TO SUPPORT NATIONAL'S PRODUCT WARRANTY. EXCEPT WHERE MANDATED BY GOVERNMENT REQUIREMENTS, TESTING OF ALL PARAMETERS OF EACH PRODUCT IS NOT NECESSARILY PERFORMED. NATIONAL ASSUMES NO LIABILITY FOR APPLICATIONS ASSISTANCE OR BUYER PRODUCT DESIGN. BUYERS ARE RESPONSIBLE FOR THEIR PRODUCTS AND APPLICATIONS USING NATIONAL COMPONENTS. PRIOR TO USING OR DISTRIBUTING ANY PRODUCTS THAT INCLUDE NATIONAL COMPONENTS, BUYERS SHOULD PROVIDE ADEQUATE DESIGN, TESTING AND OPERATING SAFEGUARDS.

EXCEPT AS PROVIDED IN NATIONAL'S TERMS AND CONDITIONS OF SALE FOR SUCH PRODUCTS, NATIONAL ASSUMES NO LIABILITY WHATSOEVER, AND NATIONAL DISCLAIMS ANY EXPRESS OR IMPLIED WARRANTY RELATING TO THE SALE AND/OR USE OF NATIONAL PRODUCTS INCLUDING LIABILITY OR WARRANTIES RELATING TO FITNESS FOR A PARTICULAR PURPOSE, MERCHANTABILITY, OR INFRINGEMENT OF ANY PATENT, COPYRIGHT OR OTHER INTELLECTUAL PROPERTY RIGHT.

## LIFE SUPPORT POLICY

**NATIONAL'S PRODUCTS ARE NOT AUTHORIZED FOR USE AS CRITICAL COMPONENTS IN LIFE SUPPORT DEVICES OR SYSTEMS WITHOUT THE EXPRESS PRIOR WRITTEN APPROVAL OF THE CHIEF EXECUTIVE OFFICER AND GENERAL COUNSEL OF NATIONAL SEMICONDUCTOR CORPORATION.** As used herein:

Life support devices or systems are devices which (a) are intended for surgical implant into the body, or (b) support or sustain life and whose failure to perform when properly used in accordance with instructions for use provided in the labeling can be reasonably expected to result in a significant injury to the user. A critical component is any component in a life support device or system whose failure to perform can be reasonably expected to cause the failure of the life support device or system or to affect its safety or effectiveness.

National Semiconductor and the National Semiconductor logo are registered trademarks of National Semiconductor Corporation. All other brand or product names may be trademarks or registered trademarks of their respective holders.

Copyright© 2008 National Semiconductor Corporation

For the most current product information visit us at [www.national.com](http://www.national.com)



**National Semiconductor  
Americas Technical  
Support Center**  
Email:  
[new.feedback@nsc.com](mailto:new.feedback@nsc.com)  
Tel: 1-800-272-9959

**National Semiconductor Europe  
Technical Support Center**  
Email: [europe.support@nsc.com](mailto:europe.support@nsc.com)  
German Tel: +49 (0) 180 5010 771  
English Tel: +44 (0) 870 850 4288

**National Semiconductor Asia  
Pacific Technical Support Center**  
Email: [ap.support@nsc.com](mailto:ap.support@nsc.com)

**National Semiconductor Japan  
Technical Support Center**  
Email: [jpn.feedback@nsc.com](mailto:jpn.feedback@nsc.com)