

# LM3677 Evaluation Board

National Semiconductor  
Application Note 1595  
Jingdong Chen  
October 14, 2008



## Introduction

The LM3677 evaluation board is a working demonstration of a step down DC-DC converter. This application note contains information about the evaluation board. For further information on buck converter topology, device electrical characteristics, and component selection please refer to the datasheet.

## General Description

The LM3677 converts high input voltages to lower output voltages with high efficiency through an inductor based switching topology. Automatic intelligent switching between PWM low-noise and PFM low-current mode offers improved system control. LM3677 is available in both fixed output voltage options and adjustable voltage options range from 1.2V to 3.3V in a micro SMD-5 package. The fixed output voltage options

available in a micro SMD-5 package are 1.2V, 1.3V, 1.5V, 1.6V, 1.8V, 2.5V, 2.8V, and 3.3V. The LM3677 is also available in a 6-pin LLP package with fixed voltage options 1.2V, 1.5V, 1.8V, and 1.82V.

## Operating Conditions

- Recommended input voltage range:  
 $V_{IN} = 2.7V$  to  $4.5V$  for  $1.1V \leq V_{OUT} < 1.5V$   
 $V_{IN} = 2.7V$  to  $5.5V$  for  $1.5V \leq V_{OUT} < 1.8V$   
 $V_{IN} = (V_{OUT} + V_{DROPOUT})$  to  $5.5V$  for  $1.8V \leq V_{OUT} \leq 3.3V$   
where  $V_{DROPOUT} = I_{LOAD} * (R_{DS(on)} + R_{PFET} + R_{INDUCTOR})$
- Recommended load current:  $0 mA \leq I_{OUT} \leq 600 mA$
- Ambient temperature ( $T_A$ ) range:  $-30^{\circ}C$  to  $+85^{\circ}C$
- Junction temperature ( $T_J$ ) range:  $-30^{\circ}C$  to  $+125^{\circ}C$

## Typical Application

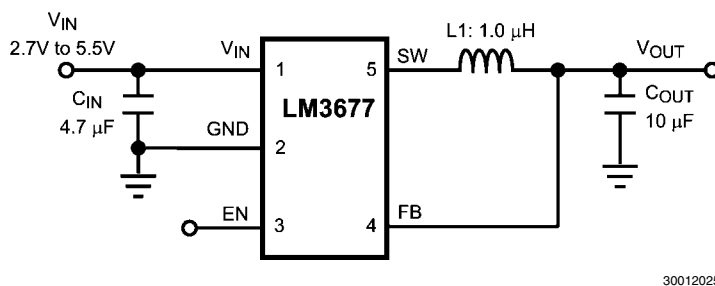


FIGURE 1. Fixed Output Voltage--Typical Application Circuit

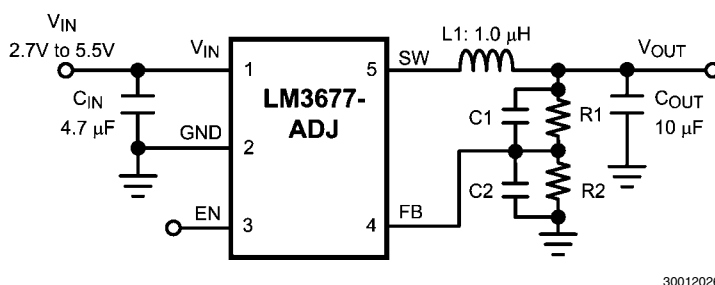


FIGURE 2. Adjustable Output Voltage—Typical Application Circuit

## Output Voltage Selection for LM3677TL-ADJ

The output voltage of the adjustable parts can be programmed through the resistor network connected from  $V_{OUT}$  to FB to GND. The resistor from FB to GND ( $R_2$ ) should be 200 k $\Omega$  to keep the current drawn through this network well below 16  $\mu$ A quiescent current level (PFM mode) but large enough that it is not susceptible to noise. If  $R_2$  is 200 k $\Omega$ , and given the  $V_{FB}$  is 0.5V, then the current through the resistor feedback network will be 2.5  $\mu$ A. The output voltage of the adjustable parts ranges from 1.2V to 3.3V. The output voltage formula is:

$$V_{OUT} = V_{FB} \left( \frac{R_1}{R_2} + 1 \right)$$

$V_{OUT}$ : output voltage (V)

$V_{FB}$ : feedback voltage (0.5V typical)

$R_1$ : feedback resistor from  $V_{OUT}$  to FB( $\Omega$ )

$R_2$ : feedback resistor from FB to GND ( $\Omega$ )

For the fixed output voltage parts the feedback resistors are internal and  $R_1$  is 0 $\Omega$ .

The bypass capacitors  $C_1$  and  $C_2$  (labeled  $C_3$  and  $C_4$  on Evaluation Board) in parallel with the feedback resistors are chosen for increased stability. Below are the formulas for  $C_1$  and  $C_2$ .

$$C_1 = \frac{1}{2 \times \pi \times R_1 \times 70 \text{ kHz}}$$

$$C_2 = \frac{1}{2 \times \pi \times R_2 \times 70 \text{ kHz}}$$

TABLE 1. LM3677-ADJ Configurations for Various  $V_{out}$  (Circuit of Figure 2)

$V_{OUT}$ (V)	$R_1$ (k $\Omega$ )	$R_2$ (k $\Omega$ )	$C_1$ (pF)	$C_2$ (pF)	L ( $\mu$ H)	$C_{IN}$ ( $\mu$ F)	$C_{OUT}$ ( $\mu$ F)
1.2	280	200	8.2	none	1.0	4.7	10
1.3	320	200	8.2	none	1.0	4.7	10
1.5	357	178	6.8	none	1.0	4.7	10
1.6	442	200	5.6	none	1.0	4.7	10
1.8	464	178	5.6	none	1.0	4.7	10
2.5	402	100	6.0	none	1.0	4.7	10
2.8	464	100	5.6	24	1.0	4.7	10
3.3	562	100	5.6	24	1.0	4.7	10

## Powering the LM3677 for Bench Measurements

When powering the LM3677 with a bench power supply, it is recommended to place a 100  $\mu$ F tantalum capacitor across the VIN and GND supply terminals of the bench power supply. This capacitor will reduce the input spike caused by the power

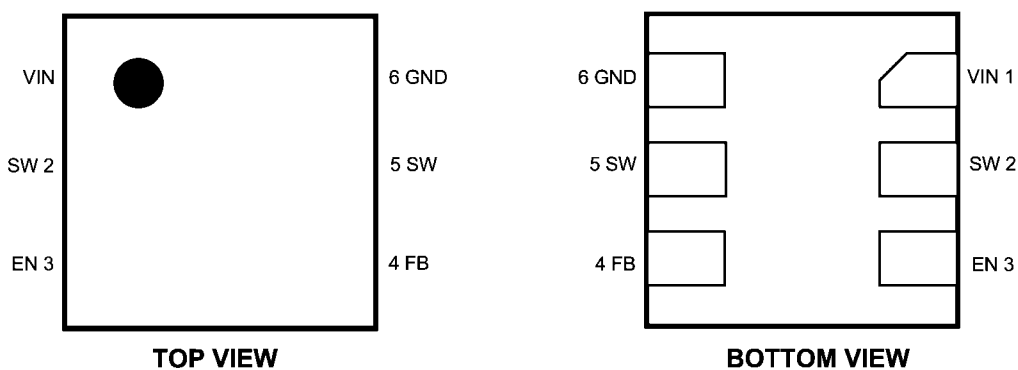
supply and long power cables. The combination of the power supply and inductance within the power cables produce a large voltage spike that may damage the device. In addition, consideration must be given to the enable pin of the device. The enable should never be taken high, until minimum guaranteed operating voltage of 2.7V is reached. The enable pin should also never exceed the input voltage.

## Connection Diagrams and Package Mark Information



30012012

**FIGURE 3. 5-bump micro SMD Package**



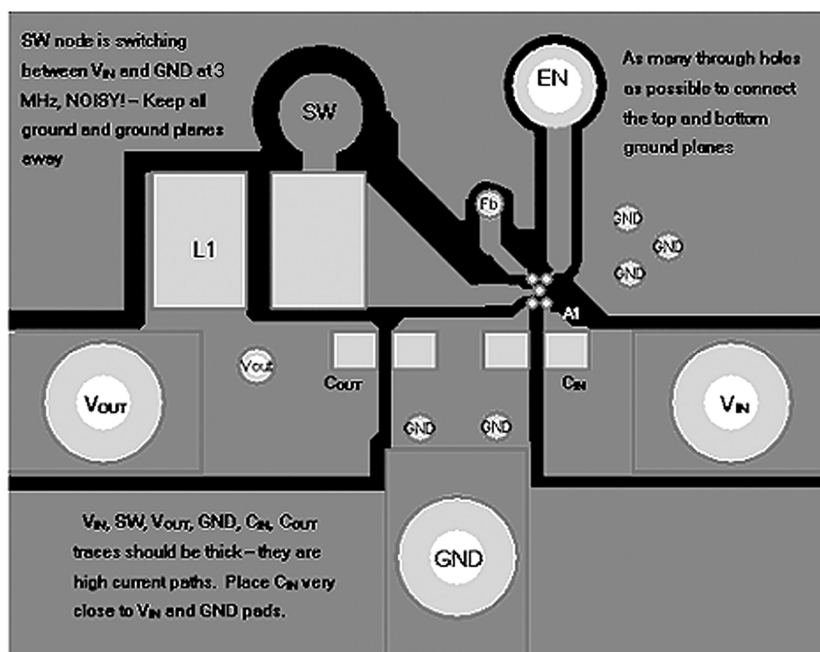
30012003

**FIGURE 4. 6-pin LLP Package**

## Pin Descriptions

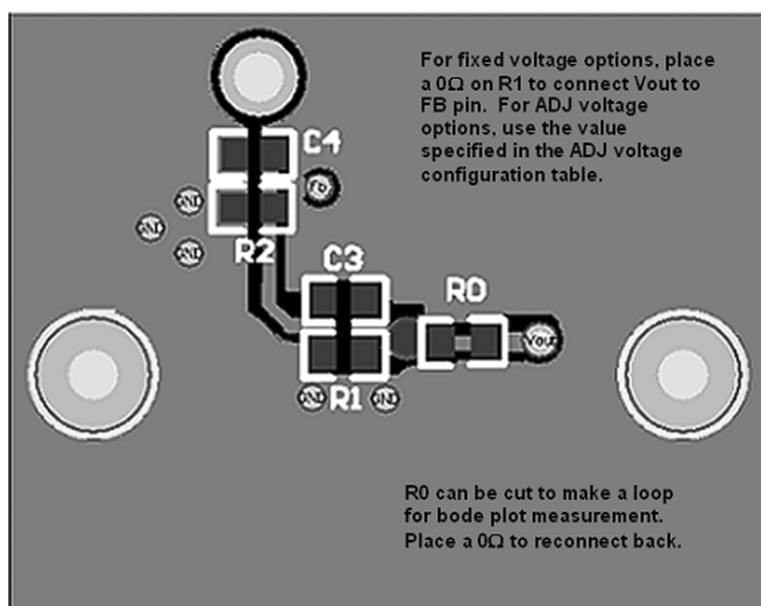
Pin#	Name	Description
A1	1	$V_{IN}$ Power supply input. Connect to the input filter capacitor.
A3	6	GND Ground pin.
C1	3	EN Enable pin. The device is in shutdown mode when voltage to this pin is < 0.4V and enabled when > 1.0V. Do not leave this pin floating.
C3	4	FB Feedback analog input. Connect to the output filter capacitor for fixed voltage versions. For adjustable version external resistor dividers are required (Figure 2). The internal resistor dividers are disabled for the adjustable version.
B2	2,5	SW Switching node connection to the internal PFET switch and NFET synchronous rectifier. Connect to an inductor with a saturation current rating that exceeds the 750 mA max. Switch Peak Current Limit Specification.

## Evaluation Board Layout



30012024

FIGURE 5. Top Layer (5-bump micro SMD)



30012023

FIGURE 6. Bottom Layer (5-bump micro SMD)

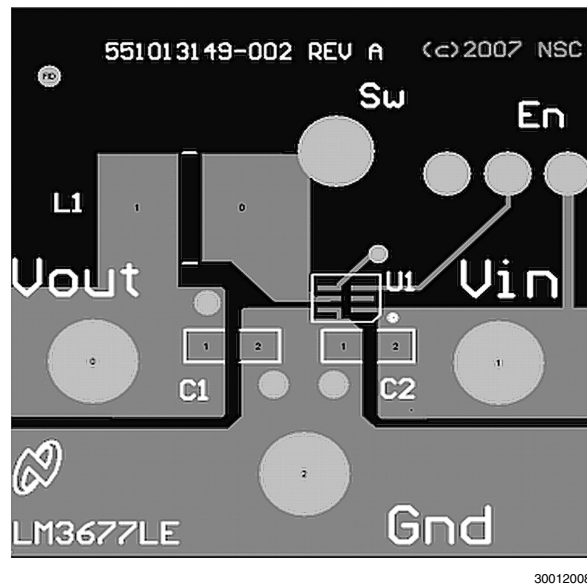


FIGURE 7. Top Layer (6-pin LLP)

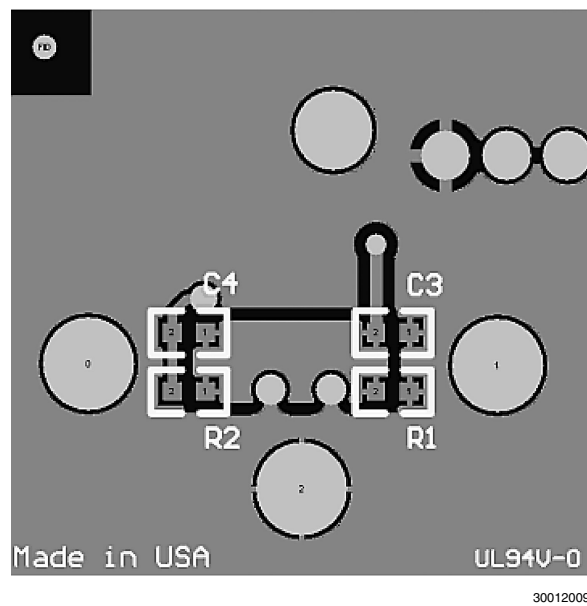


FIGURE 8. Bottom Layer (6-pin LLP)

## BOM For Common Configurations

	Manufacture	Manufacture #	Description
<b>LM3677TL - 1.8V FIXED</b>			
C1 (input C)	TDK	C1608X5R0J475K	4.7 $\mu$ F, 6.3V, 0603, 10%
C2 (output C)	TDK	C1608X5R0J106K	10 $\mu$ F, 6.3V, 0603, 10%
L1 (inductor)	FDK	MIPSA2520D 1R0	1.0 $\mu$ H chip inductor
R1 ( $V_{OUT}$ to $V_{FB}$ )	Vishay	CRCW06030R00F	0 $\Omega$ , 0603, 1%
R2 ( $V_{FB}$ to GND)	None		
C3 ( $V_{OUT}$ to $V_{FB}$ )	None		
C4 ( $V_{FB}$ to GND)	None		
$V_{IN}$ banana jack - red	Johnson Components	108-0902-001	connector, insulated banana jack (red)
$V_{OUT}$ banana jack - yellow	Johnson Components	108-0907-001	connector, insulated banana jack (yellow)
GND banana jack - black	Johnson Components	108-0903-001	connector, insulated banana jack (black)

	Manufacture	Manufacture #	Description
<b>LM3677LE - 1.8V FIXED</b>			
C1 (input C)	TDK	C1608X5R0J475K	4.7 $\mu$ F, 6.3V, 0603, 10%
C2 (output C)	TDK	C1608X5R0J106K	10 $\mu$ F, 6.3V, 0603, 10%
L1 (inductor)	FDK	MIPSA2520D 1R0	1.0 $\mu$ H chip inductor
R1 ( $V_{FB}$ to GND)	None		
R2 ( $V_{OUT}$ to $V_{FB}$ )	Vishay	CRCW06030R00F	0 $\Omega$ , 0603, 1%
C3 ( $V_{FB}$ to GND)	None		
C4 ( $V_{OUT}$ to $V_{FB}$ )	None		
$V_{IN}$ banana jack - red	Johnson Components	108-0902-001	Connector, insulated banana jack (red)
$V_{OUT}$ banana jack - yellow	Johnson Components	108-0907-001	Connector, insulated banana jack (yellow)
GND banana jack - black	Johnson Components	108-0903-001	Connector, insulated banana jack (black)



# Notes

For more National Semiconductor product information and proven design tools, visit the following Web sites at:

Products		Design Support	
Amplifiers	<a href="http://www.national.com/amplifiers">www.national.com/amplifiers</a>	WEBENCH	<a href="http://www.national.com/webench">www.national.com/webench</a>
Audio	<a href="http://www.national.com/audio">www.national.com/audio</a>	Analog University	<a href="http://www.national.com/AU">www.national.com/AU</a>
Clock Conditioners	<a href="http://www.national.com/timing">www.national.com/timing</a>	App Notes	<a href="http://www.national.com/appnotes">www.national.com/appnotes</a>
Data Converters	<a href="http://www.national.com/adc">www.national.com/adc</a>	Distributors	<a href="http://www.national.com/contacts">www.national.com/contacts</a>
Displays	<a href="http://www.national.com/displays">www.national.com/displays</a>	Green Compliance	<a href="http://www.national.com/quality/green">www.national.com/quality/green</a>
Ethernet	<a href="http://www.national.com/ethernet">www.national.com/ethernet</a>	Packaging	<a href="http://www.national.com/packaging">www.national.com/packaging</a>
Interface	<a href="http://www.national.com/interface">www.national.com/interface</a>	Quality and Reliability	<a href="http://www.national.com/quality">www.national.com/quality</a>
LVDS	<a href="http://www.national.com/lvds">www.national.com/lvds</a>	Reference Designs	<a href="http://www.national.com/refdesigns">www.national.com/refdesigns</a>
Power Management	<a href="http://www.national.com/power">www.national.com/power</a>	Feedback	<a href="http://www.national.com/feedback">www.national.com/feedback</a>
Switching Regulators	<a href="http://www.national.com/switchers">www.national.com/switchers</a>		
LDOs	<a href="http://www.national.com/ldo">www.national.com/ldo</a>		
LED Lighting	<a href="http://www.national.com/led">www.national.com/led</a>		
PowerWise	<a href="http://www.national.com/powerwise">www.national.com/powerwise</a>		
Serial Digital Interface (SDI)	<a href="http://www.national.com/sdi">www.national.com/sdi</a>		
Temperature Sensors	<a href="http://www.national.com/tempsensors">www.national.com/tempsensors</a>		
Wireless (PLL/VCO)	<a href="http://www.national.com/wireless">www.national.com/wireless</a>		

THE CONTENTS OF THIS DOCUMENT ARE PROVIDED IN CONNECTION WITH NATIONAL SEMICONDUCTOR CORPORATION ("NATIONAL") PRODUCTS. NATIONAL MAKES NO REPRESENTATIONS OR WARRANTIES WITH RESPECT TO THE ACCURACY OR COMPLETENESS OF THE CONTENTS OF THIS PUBLICATION AND RESERVES THE RIGHT TO MAKE CHANGES TO SPECIFICATIONS AND PRODUCT DESCRIPTIONS AT ANY TIME WITHOUT NOTICE. NO LICENSE, WHETHER EXPRESS, IMPLIED, ARISING BY ESTOPPEL OR OTHERWISE, TO ANY INTELLECTUAL PROPERTY RIGHTS IS GRANTED BY THIS DOCUMENT.

TESTING AND OTHER QUALITY CONTROLS ARE USED TO THE EXTENT NATIONAL DEEMS NECESSARY TO SUPPORT NATIONAL'S PRODUCT WARRANTY. EXCEPT WHERE MANDATED BY GOVERNMENT REQUIREMENTS, TESTING OF ALL PARAMETERS OF EACH PRODUCT IS NOT NECESSARILY PERFORMED. NATIONAL ASSUMES NO LIABILITY FOR APPLICATIONS ASSISTANCE OR BUYER PRODUCT DESIGN. BUYERS ARE RESPONSIBLE FOR THEIR PRODUCTS AND APPLICATIONS USING NATIONAL COMPONENTS. PRIOR TO USING OR DISTRIBUTING ANY PRODUCTS THAT INCLUDE NATIONAL COMPONENTS, BUYERS SHOULD PROVIDE ADEQUATE DESIGN, TESTING AND OPERATING SAFEGUARDS.

EXCEPT AS PROVIDED IN NATIONAL'S TERMS AND CONDITIONS OF SALE FOR SUCH PRODUCTS, NATIONAL ASSUMES NO LIABILITY WHATSOEVER, AND NATIONAL DISCLAIMS ANY EXPRESS OR IMPLIED WARRANTY RELATING TO THE SALE AND/OR USE OF NATIONAL PRODUCTS INCLUDING LIABILITY OR WARRANTIES RELATING TO FITNESS FOR A PARTICULAR PURPOSE, MERCHANTABILITY, OR INFRINGEMENT OF ANY PATENT, COPYRIGHT OR OTHER INTELLECTUAL PROPERTY RIGHT.

## LIFE SUPPORT POLICY

**NATIONAL'S PRODUCTS ARE NOT AUTHORIZED FOR USE AS CRITICAL COMPONENTS IN LIFE SUPPORT DEVICES OR SYSTEMS WITHOUT THE EXPRESS PRIOR WRITTEN APPROVAL OF THE CHIEF EXECUTIVE OFFICER AND GENERAL COUNSEL OF NATIONAL SEMICONDUCTOR CORPORATION.** As used herein:

Life support devices or systems are devices which (a) are intended for surgical implant into the body, or (b) support or sustain life and whose failure to perform when properly used in accordance with instructions for use provided in the labeling can be reasonably expected to result in a significant injury to the user. A critical component is any component in a life support device or system whose failure to perform can be reasonably expected to cause the failure of the life support device or system or to affect its safety or effectiveness.

National Semiconductor and the National Semiconductor logo are registered trademarks of National Semiconductor Corporation. All other brand or product names may be trademarks or registered trademarks of their respective holders.

Copyright© 2008 National Semiconductor Corporation

For the most current product information visit us at [www.national.com](http://www.national.com)



**National Semiconductor  
Americas Technical  
Support Center**  
Email: [support@nsc.com](mailto:support@nsc.com)  
Tel: 1-800-272-9959

**National Semiconductor Europe  
Technical Support Center**  
Email: [europe.support@nsc.com](mailto:europe.support@nsc.com)  
German Tel: +49 (0) 180 5010 771  
English Tel: +44 (0) 870 850 4288

**National Semiconductor Asia  
Pacific Technical Support Center**  
Email: [ap.support@nsc.com](mailto:ap.support@nsc.com)

**National Semiconductor Japan  
Technical Support Center**  
Email: [jpn.feedback@nsc.com](mailto:jpn.feedback@nsc.com)