

# LMP860X SOIC Evaluation Board User's Manual

National Semiconductor  
Application Note 1958  
BeB Hennink  
August 4, 2009



## Introduction

The LMP860X SOIC Evaluation Board is designed to evaluate current sense amplifiers like the LMP8601, LMP8602, and LMP8603. These all are 60V Common Mode, Bidirectional Precision Current Sensing amplifier with different gain. This board has a LMP860X part mounted on the PCB together with the required de-coupling capacitor, power supply connections, Input and Output connectors and a 3 pin header for connecting the offset pin to either GND or  $V_S$ .

## General Description

The LMP860X and LMP860XQ are fixed gain precision amplifiers. The part amplifies and filters small differential signals in the presence of high common mode voltages. The input common mode voltage range is  $-22V$  to  $+60V$  when operating from a single  $5V$  supply. With  $3.3V$  supply, the input common mode voltage range is from  $-4V$  to  $+27V$ . The LMP860X and LMP860XQ are members of the Linear Monolithic Precision (LMP®) family and are ideal parts for unidirectional and bidirectional current sensing applications.

The parts have a precise gain (LMP8601 20x, LMP8602 50x, LMP8603 100x) which is adequate in most targeted applications to drive an ADC to its full scale value. The fixed gain is achieved in two separate stages, a preamplifier with a gain of

10x and an output stage buffer amplifier with a gain of resp. 2x, 5x, 10x. The connection between the two stages of the signal path is brought out on two pins to enable the possibility to create an additional filter network around the output buffer amplifier. These pins can also be used for alternative configurations with different gain as described in the applications section of the data sheet.

The mid-rail offset adjustment pin enables the user to use these devices for bidirectional single supply voltage current sensing. The output signal is bidirectional and mid-rail referenced when this pin is connected to the positive supply rail. With the offset pin connected to ground, the output signal is unidirectional and ground-referenced.

The LMP860XQ incorporates enhanced manufacturing and support processes for the automotive market, including defect detection methodologies. Reliability qualification is compliant with the requirements and temperature grades defined in the AEC Q100 standard

## LMP860X Operating Conditions

- |                        |                                  |
|------------------------|----------------------------------|
| • Temperature Range    | $-40^{\circ}C$ to $125^{\circ}C$ |
| • Power Supply Voltage | $3.0V \leq V_S \leq 5.5V$        |
| • CMVR at $V_S = 3.3V$ | $-4V$ to $27V$                   |
| • CMVR at $V_S = 5.0V$ | $-22V$ to $60V$                  |

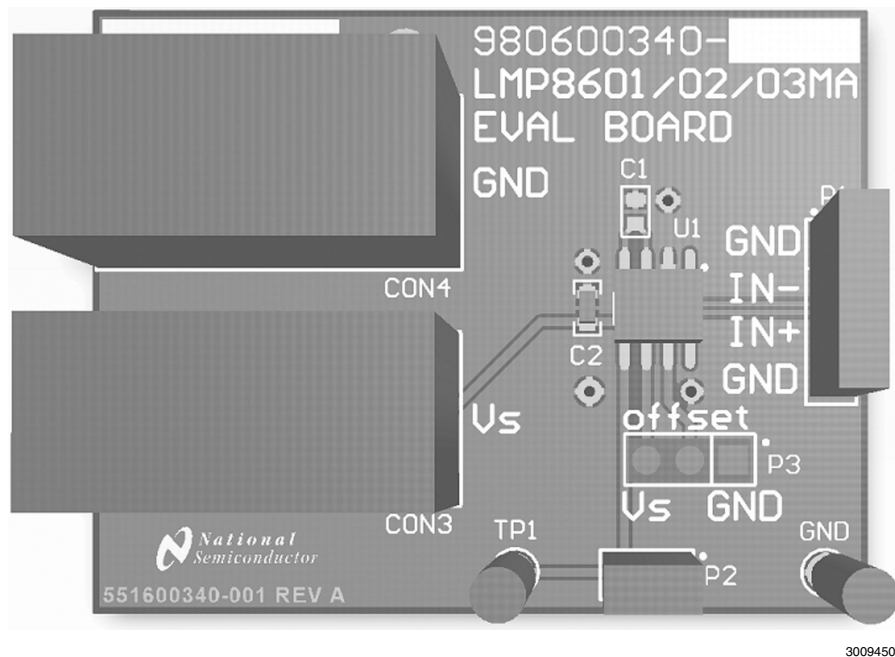


FIGURE 1. The LMP860X Evaluation Board

## Description of the LMP860X Evaluation Board

The LMP860X evaluation board requires a power supply with a voltage between 3.0V and 5.5V, the supply current will be <2 mA in normal operation with high impedance load on the output of the part. The positive supply voltage is connected to  $V_S$  (CON3) The negative supply voltage is connected to GND (CON4).

The offset voltage on the output of the LMP860X is determined by the voltage on the offset pin which is connected to pin2 of P3 and the offset voltage will be  $V_{Offset}/2$ . This pin is normally connected with a jumper to GND or  $V_S$ , but this pin can also be driven from a low impedance source (<10  $\Omega$ ).

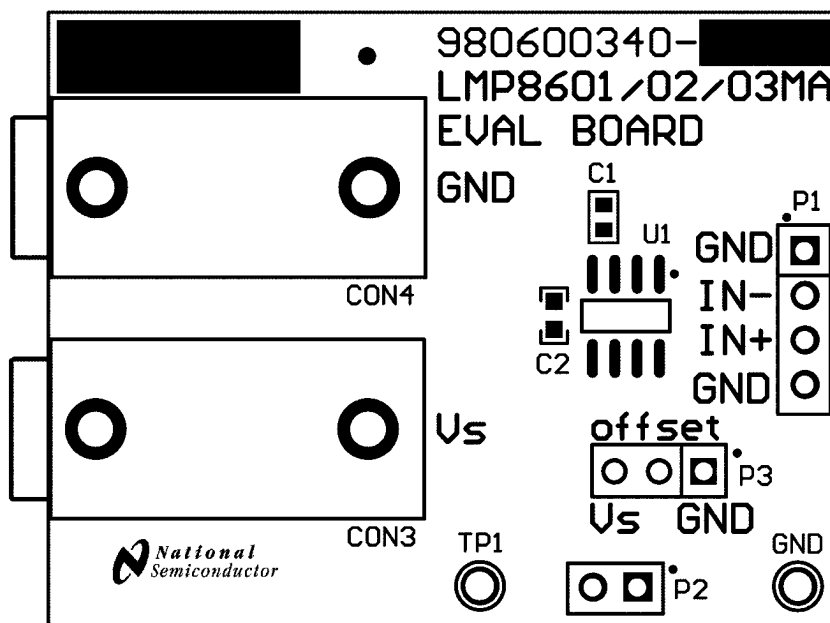
With a jumper on P3 between 2-3 the offset pin is connected to  $V_S$  and the offset voltage is half the value of  $V_S$ . In this

configuration the LMP860X can be used for measuring bidirectional currents.

With a jumper on P3 between 1-2 the offset pin is connected to GND and the output voltage is ground referenced. In this configuration the LMP860X is used for measuring unidirectional currents.

The input signal is connected between -IN and +IN (P1 pin 2,3) and the output signal is available at OUT (P2).

On the board there is the possibility to place a capacitor C1 which creates a low pass filter between the first and second stage. This can be used to reduce the output noise and glitches that might appear from switching large common mode voltages with very fast transients at the input. (Please see the application section of the LMP860X data sheet for more details about this filter).



30094504

FIGURE 2. Power Supply Connectors and Headers

## PCB Layout Guidelines

This section provides general practical guidelines for PCB layouts that use various power and ground traces. Designers should note that these are only "rule-of-thumb" recommendations and the actual results are predicated on the final layout.

### DIFFERENTIAL SIGNALS

The two input pins of the LMP860X form a differential pair that must be handled following the rules given below.

- Keep both signals coupled by routing them closely together and keeping them of equal length.

- Do not allow any other signal in between these two signals of the differential pair.
- Keep all impedances in both traces of the signal equal.

### POWER, GROUND AND DE-COUPLING

Keep the power supply de-coupling capacitor close to the power supply pin ( $V_S$  of the part.)

Make sure all return currents of the signals can flow next to the originating signals

## Description of Headers and Connectors of the LMP860X Evaluation Board

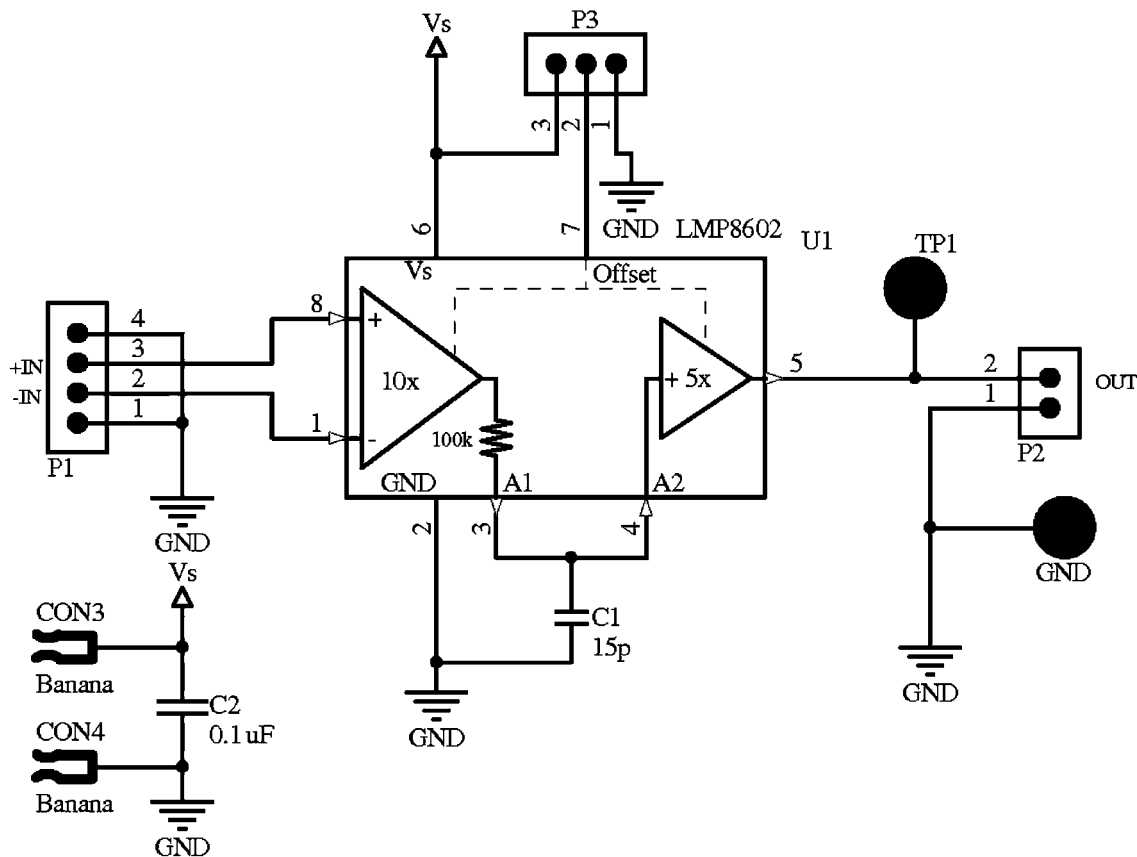
The LMP860X Evaluation Board provides the following headers and connectors for connecting test equipment and supplying the LMP860X part.

### Connector and Header Functions

Designator	Function or Use	Comment
P3	Offset selection	2–3 Mid rail offset (Bi-directional) 1–2 Ground Referenced (unidirectional)
P1	GND	Pin1
	Input	Pin2 = Negative Input Pin3 = Positive Input
	GND	Pin4
P2	Output	Pin1 = GND Pin2 = output
CON3	supply $V_S$	
CON4	ground connection (GND)	

### Schematic with LMP8602MM Mounted

This schematic shows the LMP860X Evaluation board with a LMP8602MM mounted on the PCB. For versions of the MCB stuffed with LMP8601 or LMP8603, the only difference will be the gain of the part in the second stage.



30094503

FIGURE 3. Schematic Diagram

Layout

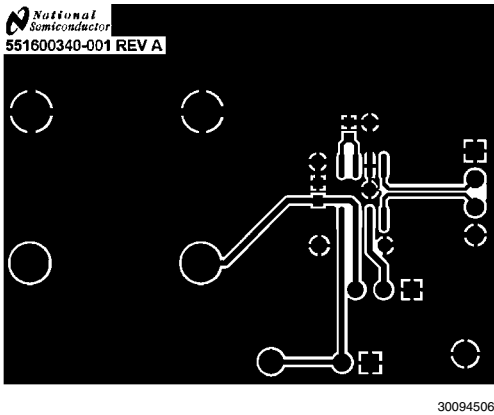


FIGURE 4. Layout, Top Layer

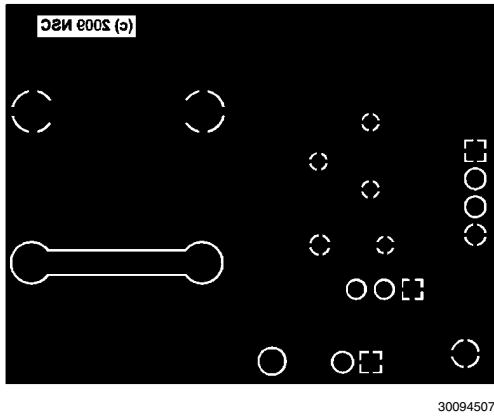


FIGURE 5. Layout, Bottom layer

Bill of Materials

Designator	Component	Value	Tolerance	Comment	Package Type
C1	Capacitor	N/A			0603
C2	Capacitor	100 nF			0603
P1	Header 4 pin			Input	
P2	Header 2 pin			Output	
P3	Header3 pin			Mid-rail Offset	Banana_COLOR
CON3	Banana plug	RED		V <sub>S</sub>	Banana_COLOR
CON4	Banana plug	BLACK		GND	Banana_COLOR
U1	LMP860X	LMP860XMA			M08A_N



## Notes

For more National Semiconductor product information and proven design tools, visit the following Web sites at:

Products		Design Support	
Amplifiers	<a href="http://www.national.com/amplifiers">www.national.com/amplifiers</a>	WEBENCH® Tools	<a href="http://www.national.com/webench">www.national.com/webench</a>
Audio	<a href="http://www.national.com/audio">www.national.com/audio</a>	App Notes	<a href="http://www.national.com/appnotes">www.national.com/appnotes</a>
Clock and Timing	<a href="http://www.national.com/timing">www.national.com/timing</a>	Reference Designs	<a href="http://www.national.com/refdesigns">www.national.com/refdesigns</a>
Data Converters	<a href="http://www.national.com/adac">www.national.com/adac</a>	Samples	<a href="http://www.national.com/samples">www.national.com/samples</a>
Interface	<a href="http://www.national.com/interface">www.national.com/interface</a>	Eval Boards	<a href="http://www.national.com/evalboards">www.national.com/evalboards</a>
LVDS	<a href="http://www.national.com/lvds">www.national.com/lvds</a>	Packaging	<a href="http://www.national.com/packaging">www.national.com/packaging</a>
Power Management	<a href="http://www.national.com/power">www.national.com/power</a>	Green Compliance	<a href="http://www.national.com/quality/green">www.national.com/quality/green</a>
Switching Regulators	<a href="http://www.national.com/switchers">www.national.com/switchers</a>	Distributors	<a href="http://www.national.com/contacts">www.national.com/contacts</a>
LDOs	<a href="http://www.national.com/ldo">www.national.com/ldo</a>	Quality and Reliability	<a href="http://www.national.com/quality">www.national.com/quality</a>
LED Lighting	<a href="http://www.national.com/led">www.national.com/led</a>	Feedback/Support	<a href="http://www.national.com/feedback">www.national.com/feedback</a>
Voltage Reference	<a href="http://www.national.com/vref">www.national.com/vref</a>	Design Made Easy	<a href="http://www.national.com/easy">www.national.com/easy</a>
PowerWise® Solutions	<a href="http://www.national.com/powerwise">www.national.com/powerwise</a>	Solutions	<a href="http://www.national.com/solutions">www.national.com/solutions</a>
Serial Digital Interface (SDI)	<a href="http://www.national.com/sdi">www.national.com/sdi</a>	Mil/Aero	<a href="http://www.national.com/milaero">www.national.com/milaero</a>
Temperature Sensors	<a href="http://www.national.com/tempsensors">www.national.com/tempsensors</a>	SolarMagic™	<a href="http://www.national.com/solarmagic">www.national.com/solarmagic</a>
Wireless (PLL/VCO)	<a href="http://www.national.com/wireless">www.national.com/wireless</a>	PowerWise® Design University	<a href="http://www.national.com/training">www.national.com/training</a>

THE CONTENTS OF THIS DOCUMENT ARE PROVIDED IN CONNECTION WITH NATIONAL SEMICONDUCTOR CORPORATION ("NATIONAL") PRODUCTS. NATIONAL MAKES NO REPRESENTATIONS OR WARRANTIES WITH RESPECT TO THE ACCURACY OR COMPLETENESS OF THE CONTENTS OF THIS PUBLICATION AND RESERVES THE RIGHT TO MAKE CHANGES TO SPECIFICATIONS AND PRODUCT DESCRIPTIONS AT ANY TIME WITHOUT NOTICE. NO LICENSE, WHETHER EXPRESS, IMPLIED, ARISING BY ESTOPPEL OR OTHERWISE, TO ANY INTELLECTUAL PROPERTY RIGHTS IS GRANTED BY THIS DOCUMENT.

TESTING AND OTHER QUALITY CONTROLS ARE USED TO THE EXTENT NATIONAL DEEMS NECESSARY TO SUPPORT NATIONAL'S PRODUCT WARRANTY. EXCEPT WHERE MANDATED BY GOVERNMENT REQUIREMENTS, TESTING OF ALL PARAMETERS OF EACH PRODUCT IS NOT NECESSARILY PERFORMED. NATIONAL ASSUMES NO LIABILITY FOR APPLICATIONS ASSISTANCE OR BUYER PRODUCT DESIGN. BUYERS ARE RESPONSIBLE FOR THEIR PRODUCTS AND APPLICATIONS USING NATIONAL COMPONENTS. PRIOR TO USING OR DISTRIBUTING ANY PRODUCTS THAT INCLUDE NATIONAL COMPONENTS, BUYERS SHOULD PROVIDE ADEQUATE DESIGN, TESTING AND OPERATING SAFEGUARDS.

EXCEPT AS PROVIDED IN NATIONAL'S TERMS AND CONDITIONS OF SALE FOR SUCH PRODUCTS, NATIONAL ASSUMES NO LIABILITY WHATSOEVER, AND NATIONAL DISCLAIMS ANY EXPRESS OR IMPLIED WARRANTY RELATING TO THE SALE AND/OR USE OF NATIONAL PRODUCTS INCLUDING LIABILITY OR WARRANTIES RELATING TO FITNESS FOR A PARTICULAR PURPOSE, MERCHANTABILITY, OR INFRINGEMENT OF ANY PATENT, COPYRIGHT OR OTHER INTELLECTUAL PROPERTY RIGHT.

### LIFE SUPPORT POLICY

**NATIONAL'S PRODUCTS ARE NOT AUTHORIZED FOR USE AS CRITICAL COMPONENTS IN LIFE SUPPORT DEVICES OR SYSTEMS WITHOUT THE EXPRESS PRIOR WRITTEN APPROVAL OF THE CHIEF EXECUTIVE OFFICER AND GENERAL COUNSEL OF NATIONAL SEMICONDUCTOR CORPORATION.** As used herein:

Life support devices or systems are devices which (a) are intended for surgical implant into the body, or (b) support or sustain life and whose failure to perform when properly used in accordance with instructions for use provided in the labeling can be reasonably expected to result in a significant injury to the user. A critical component is any component in a life support device or system whose failure to perform can be reasonably expected to cause the failure of the life support device or system or to affect its safety or effectiveness.

National Semiconductor and the National Semiconductor logo are registered trademarks of National Semiconductor Corporation. All other brand or product names may be trademarks or registered trademarks of their respective holders.

Copyright© 2009 National Semiconductor Corporation

For the most current product information visit us at [www.national.com](http://www.national.com)



**National Semiconductor  
Americas Technical  
Support Center**  
Email: [support@nsc.com](mailto:support@nsc.com)  
Tel: 1-800-272-9959

**National Semiconductor Europe  
Technical Support Center**  
Email: [europe.support@nsc.com](mailto:europe.support@nsc.com)

**National Semiconductor Asia  
Pacific Technical Support Center**  
Email: [ap.support@nsc.com](mailto:ap.support@nsc.com)

**National Semiconductor Japan  
Technical Support Center**  
Email: [jpn.feedback@nsc.com](mailto:jpn.feedback@nsc.com)