

# LM49270 Demonstration Board

National Semiconductor  
Application Note 1638  
Vera Tsang  
May 2007



## General Description

The LM49270SQ demoboard is a fully assembled circuit board for use of evaluating the LM49270 Stereo Class D audio subsystem with OCL headphone amplifier, 3D enhancement, and headphone sense. The LM49270 operates from a 2.4V to 5.5V power supply. The filterless stereo class D amplifiers delivers 2.2W/channel into a 4 $\Omega$  load with less than 10% THD+N with a 5V supply. The headphone amplifiers

feature National's Output Capacitor-less(OCL) architecture that eliminates the output coupling capacitors required by traditional headphone amplifiers. Additionally, the headphone amplifier can be configured as capacitively coupled loads.

The LM49270 features a 32 step volume control for the headphone and stereo output. The device mode select and volume are controlled through an I<sup>2</sup>C compatible interface.

## Bill of Materials

DESIGNATOR	QUANTITY	DESCRIPTION
C1–C2	2	100 $\mu$ F $\pm$ 10% 10V C Case Tantalum Capacitors AVX TPSC107K010R0075
C4	1	0.22 $\mu$ F $\pm$ 10% 16V X7R 0603 Ceramic Capacitor Murata GRM188R71C223KA01D
C5	1	2.2 $\mu$ F $\pm$ 10% 16V X7R 0805 Ceramic Capacitor Murata GRM21BR71A225KA01L
C6–C7	2	1 $\mu$ F $\pm$ 10% 16V 1206 Ceramic Capacitors Murata GRM31MR71C105KA01L
C8	1	10 $\mu$ F $\pm$ 10% 16V B Case Tantalum Capacitor AVX TPSB106K016R0500
C9–C12	4	1 $\mu$ F $\pm$ 10% 16V 0805 Ceramic Capacitors Murata GRM21BR71C105KA01L
R1	1	4.7k $\Omega$ $\pm$ 0.1% Panasonic-ECG ERA-3AEB472V
R2	1	1k $\Omega$ $\pm$ 0.1% Panasonic-ECG ERA-3AEB102V
R3	1	100k $\Omega$ Potentiometer Digikey ST4B104CT

## Connectors

DESIGNATOR	LABEL	FUNCTION
JP1, JP2		These connectors are used to switch between CC or OCL mode. If JP1 and JP3 are open, then the LM49270 is in CC mode. If JP1 and JP3 are closed, then the LM49270 is in OCL mode.
JP3	VOC	JP3 is used to ground the VOC pin of the LM49270. In CC mode, JP3 should be closed, and the VOC amplifier is disabled.
JP4, JP5	LIN, RIN	These connectors are used for connecting the input to the LM49270. LIN (JP4) is for left input, and RIN (JP5) is for right input.
JP6	VDDL5	This connector is for the loudspeaker power supply connection. Apply an external power supply's positive voltage to the pin labeled VDDL5 and the ground source to the pin labeled GND.
JP7, JP9	RIGHT SPEAKER, LEFT SPEAKER	These connectors are for the right speaker output (JP7) and left speaker output (JP9).
JP8	VDDI2C/ADR/ GND	There are three pins on this connector, VDDI2C, ADR, and GND. It is used to set the LM49270 address. To set the ADR bit to 1, close VDDI2C and ADR. To set the ADR bit to 0, close GND and ADR.
JP10		This connector should be closed when the user wants to use the VDDL5 as the VDD source for the I2CVDD.
JP11	VDDI2C	This connector can be used to connect to a VDD source if the user wants to power the VDDI2C externally.
JP12	HPS	This connector is connected to the headphone sense pin of the part and the headphone jack. If JP12 is closed, then the headphone sense function works as designed with a headphone jack. If JP12 is open, then the user does not need a headphone jack to test the function of the HPS. To set to HP mode, set the right pin of JP12 to low. To set to speaker mode, set the right pin to high.
JP13, JP14	RHP, LHP	These connectors are for the right headphone output (JP13) and the left headphone output (JP14).
JP15	VDD	This connector provides the power supply connection. Apply an external power supply's positive voltage to the pin labeled VDD and the ground source to the pin labeled GND.
JP16		This connector is used to short the LHP to a pull down resistor. In CC mode, JP16 should be closed. In OCL mode, JP16 should be open.
JP17		This connector is used to short VDD and VDDL5 together. If the user wanted to use only one power supply, then closing JP17 will allow the power supply to be connected to JP15 or JP6 only.

## Quick Start - in CC Mode

- 1) Connect a shunt across the ADR and GND pins of jumper JP8. (I<sup>2</sup>C address bit = 0)
- 2) Connect a shunt across jumper JP3 (VOC = GND, Capacitor Coupled (CC) headphone mode).
- 3) Connect a shunt across jumper JP16 (for Capacitor Coupled (CC) headphone mode).
- 4) Connect a shunt across jumper JP12 to use the headphone sense function.
- 5) Connect an 8Ω speaker across jumper JP7 (Right Speaker output).
- 6) Connect an 8Ω speaker across jumper JP9 (Left Speaker output).
- 7) Connect a headphone to jack J1 (headphone jack).
- 8) Connect the 3.3V power supply to the VDD pin of jumper JP15 and the VDDLS pin of jumper JP6, and the power supply ground terminal to the GND pin of jumper JP15 and jumper JP6.
- 9) Connect the audio source to JP4 (left input) and JP5 (right input).
- 10) Connect I<sup>2</sup>C from PC to I<sup>2</sup>C Interface jumper.
- 11) Open LM49270 I<sup>2</sup>C control software.
- 12) Turn on power supply and audio source.
- 13) In the LM49270 I<sup>2</sup>C control panel, select "C-CUPL" in HEADPHONE OUTPUT COUPLING, and select CHIP POWER-ON mode "ON" to enable the device.
- 14) Adjust the volume controls to change the speaker and headphone volumes.
- 15) To enable the speakers, disconnect the headphone from jack J1.

## Board Connections

### POWER CONNECTIONS

**Power Connections** The LM49270 demoboard offers separate connections for the speaker amplifier and headphone amplifier power supplies. The separate power supplies allow the speakers to operate at a higher voltage for maximum headroom, while the headphones operate at a lower voltage, improving power dissipation. Connect the headphone amplifier power supply to the VDD pin and the power supply ground to the GND pin of jumper JP15. Connect the speaker amplifier power supply to the VDDLS pin and the power supply ground to the GND pin of JP6. As for the I<sup>2</sup>CV<sub>DD</sub>, if powered from JP11, it allows the I<sup>2</sup>C portion of the LM49270 to interface with lower voltage digital controllers.

### AUDIO INPUT CONNECTIONS

The left and right channel inputs of the LM49270 demoboard is configured for single-ended sources. Connect a left channel input source to the LIN pin and GND pin of JP4 and connect the a right channel input source to the RIN pin and GND pin of JP5.

### AUDIO OUTPUT CONNECTIONS

Jumpers JP9 and JP7 are the connections for the left and right channel speakers output respectively. The jack, J1 is a 3.5mm stereo headphone jack with a headphone sense pin.

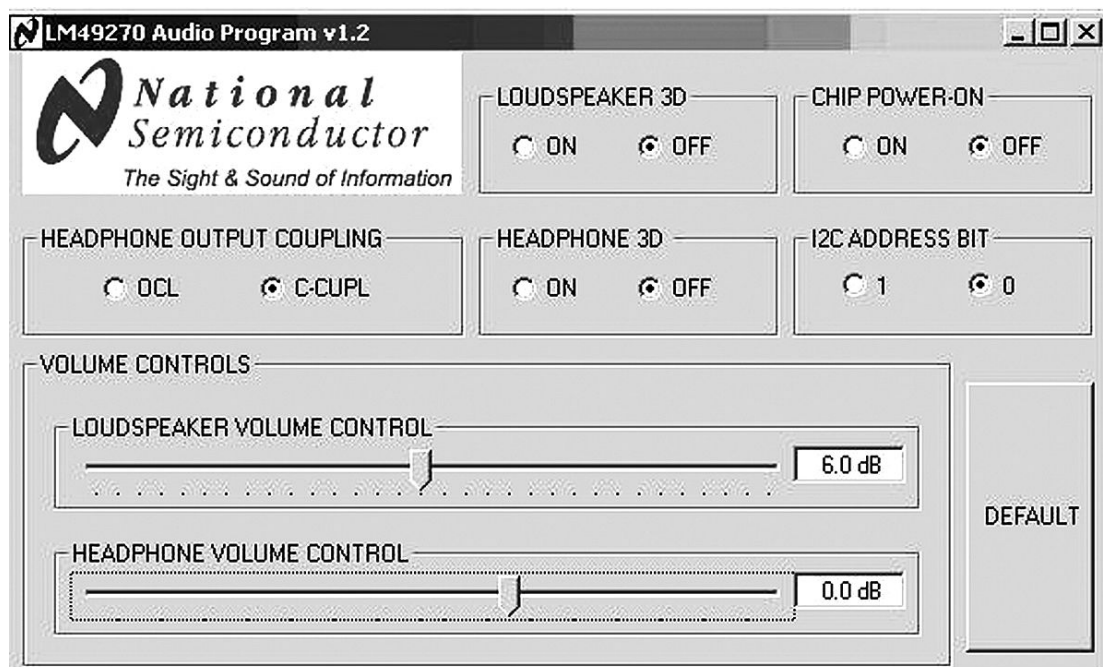
## Jumper Selection

In CC mode, install a shunt across jumper JP3 and jumper JP16. In OCL mode, install a shunt across jumper JP1 and jumper JP2.

## I<sup>2</sup>C Interface

The LM49270 is controlled through an I<sup>2</sup>C compatible serial interface. The LM49270 evaluation software provides an easy

to use graphical user interface (Figure 1). Each button corresponds to bits in an I<sup>2</sup>C command byte. See the LM49270 data sheet for detailed I<sup>2</sup>C information.



30022015

FIGURE 1. Evaluation Software Interface

### CHIP POWER - ON

The Chip Power-On button enables or disables the entire device. The device will not output any audio if the Chip Power-On is set to "Off."

### I<sup>2</sup>C ADDRESS BIT

The selection of this bit should correspond to the user's selection on jumper JP8. If the ADR pin is set to GND, then the I<sup>2</sup>C Address Bit should be set to '0'. If the ADR pin is set to VDDI2C, then the I<sup>2</sup>C Address Bit should be set to '1'.

### LOUDSPEAKER 3D, HEADPHONE 3D

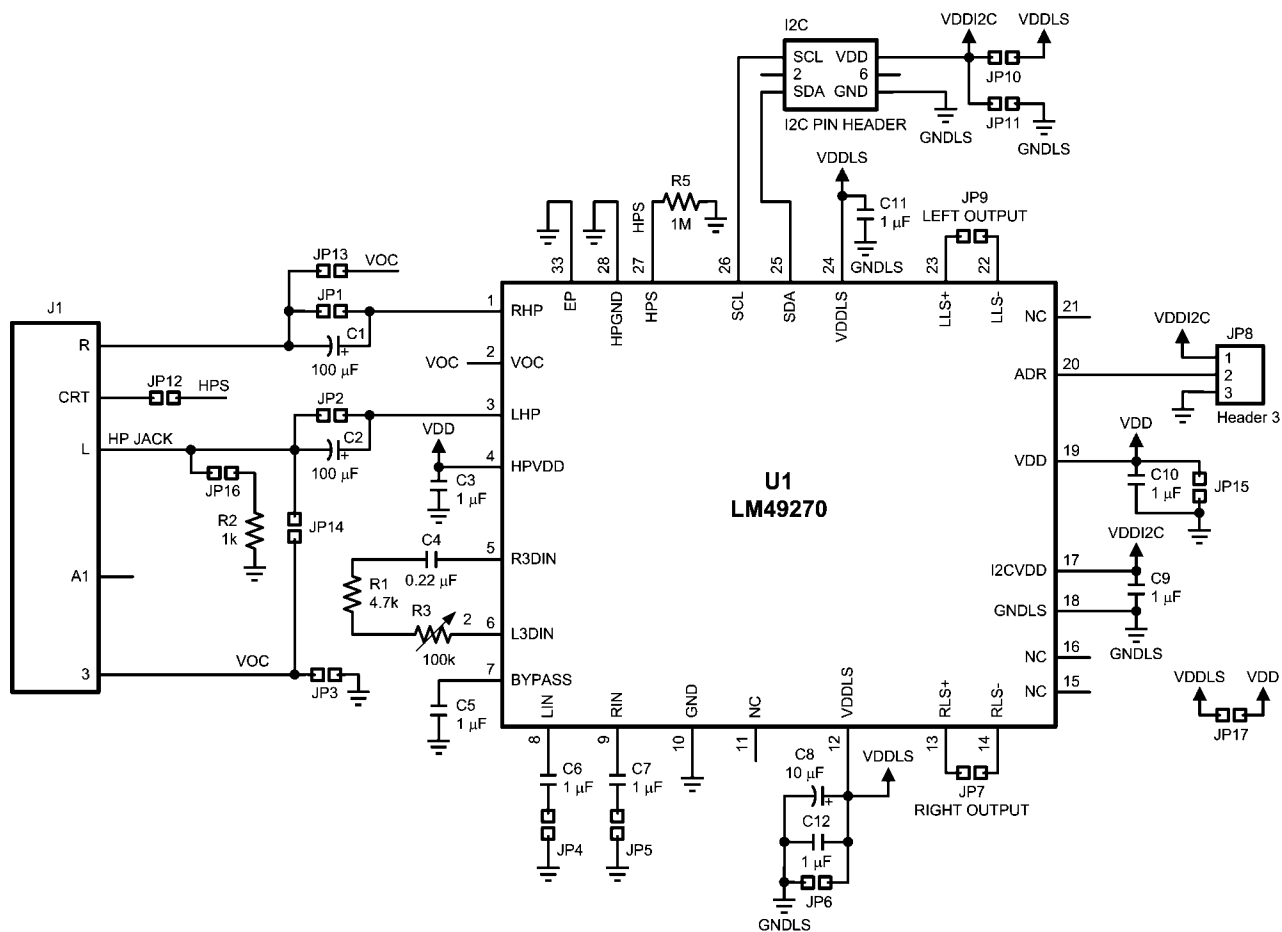
The Loudspeaker 3D and Headphone 3D button enables 3D sound enhancement for loudspeaker and Headphone, re-

spectively. By setting it to "ON" turns on 3D and allows the user to increase or decrease the 3D effect on the demoboard by changing the value of the potentiometer in the external RC network of the LM49270.

### VOLUME CONTROL

The LM49270 headphone and speaker channels feature separate volume controls. The loudspeaker volume has a range of -49dB to 30dB and the headphone has a range of -59dB to 18dB, each with 32 steps.

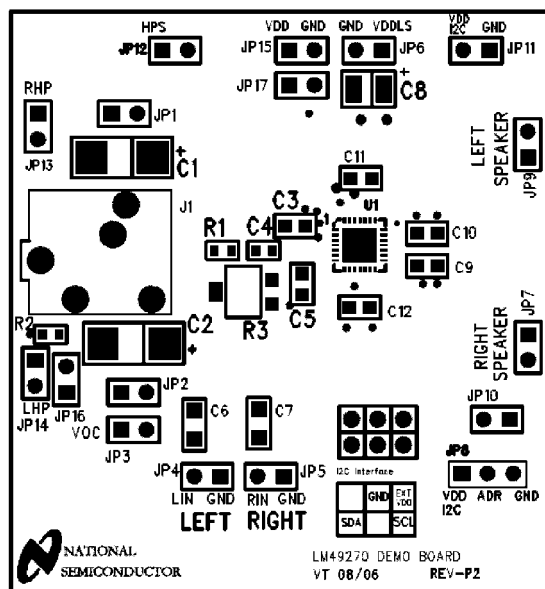
# Schematic and Layout Pictures



30022014

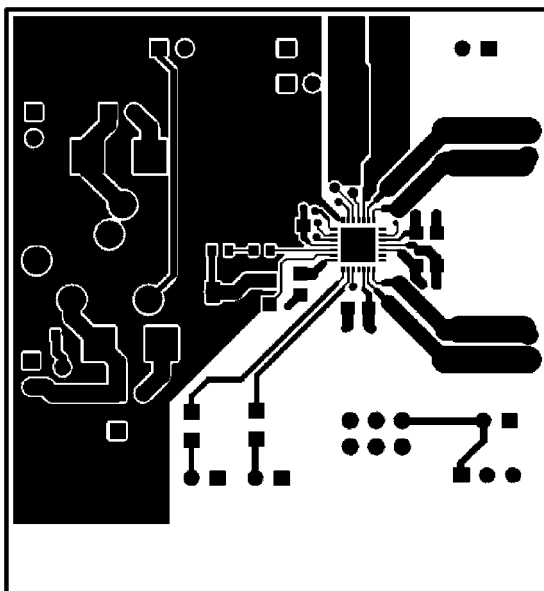
FIGURE 2. LM49270 Demoboard Schematic

## Demonstration Board PCB Layout



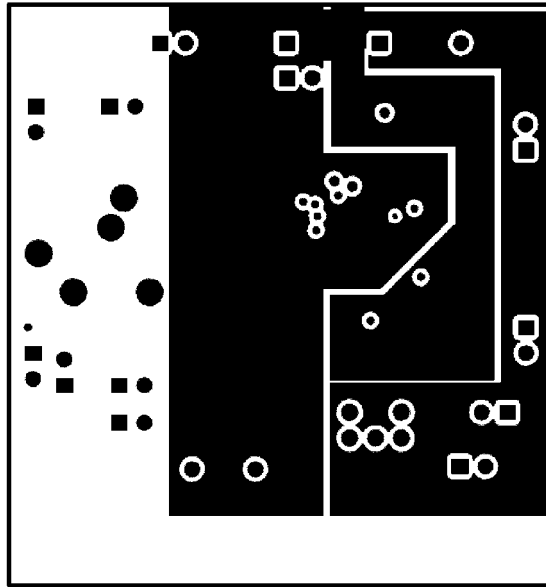
30022013

### FIGURE 3. Top Silkscreen Layer



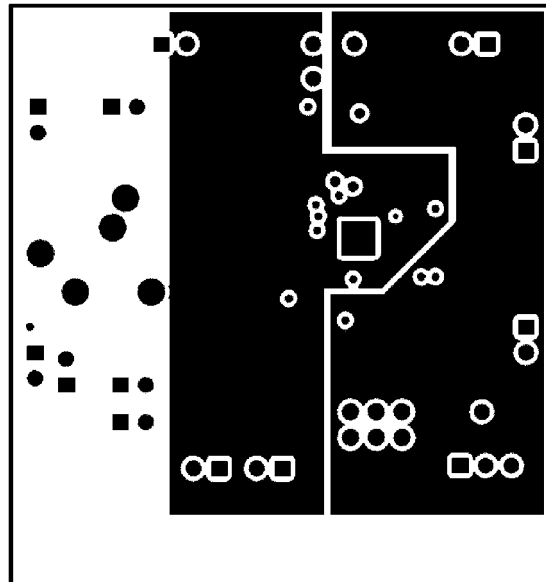
30022009

### FIGURE 4. Top Layer



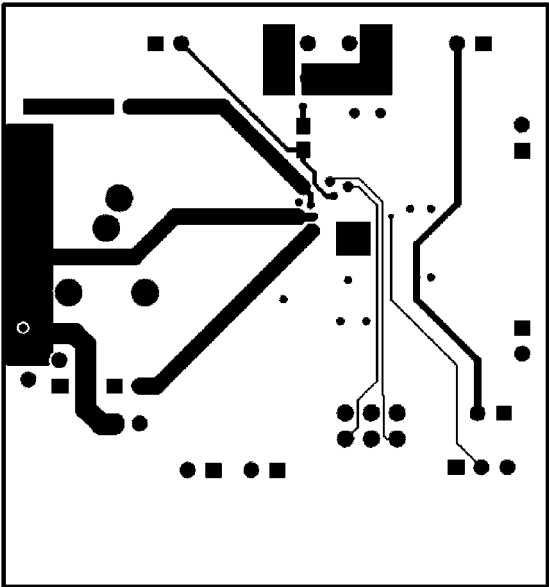
30022010

FIGURE 5. Mid Layer 1



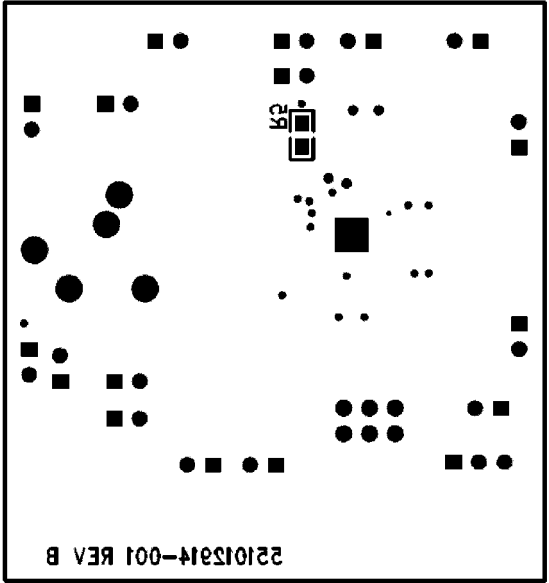
30022011

FIGURE 6. Mid Layer 2



30022012

FIGURE 7. Bottom Layer



30022008

FIGURE 8. Bottom Silkscreen



## Revision History

Rev	Date	Description
1.0	05/24/07	Initial release.

## Notes

THE CONTENTS OF THIS DOCUMENT ARE PROVIDED IN CONNECTION WITH NATIONAL SEMICONDUCTOR CORPORATION ("NATIONAL") PRODUCTS. NATIONAL MAKES NO REPRESENTATIONS OR WARRANTIES WITH RESPECT TO THE ACCURACY OR COMPLETENESS OF THE CONTENTS OF THIS PUBLICATION AND RESERVES THE RIGHT TO MAKE CHANGES TO SPECIFICATIONS AND PRODUCT DESCRIPTIONS AT ANY TIME WITHOUT NOTICE. NO LICENSE, WHETHER EXPRESS, IMPLIED, ARISING BY ESTOPPEL OR OTHERWISE, TO ANY INTELLECTUAL PROPERTY RIGHTS IS GRANTED BY THIS DOCUMENT.

TESTING AND OTHER QUALITY CONTROLS ARE USED TO THE EXTENT NATIONAL DEEMS NECESSARY TO SUPPORT NATIONAL'S PRODUCT WARRANTY. EXCEPT WHERE MANDATED BY GOVERNMENT REQUIREMENTS, TESTING OF ALL PARAMETERS OF EACH PRODUCT IS NOT NECESSARILY PERFORMED. NATIONAL ASSUMES NO LIABILITY FOR APPLICATIONS ASSISTANCE OR BUYER PRODUCT DESIGN. BUYERS ARE RESPONSIBLE FOR THEIR PRODUCTS AND APPLICATIONS USING NATIONAL COMPONENTS. PRIOR TO USING OR DISTRIBUTING ANY PRODUCTS THAT INCLUDE NATIONAL COMPONENTS, BUYERS SHOULD PROVIDE ADEQUATE DESIGN, TESTING AND OPERATING SAFEGUARDS.

EXCEPT AS PROVIDED IN NATIONAL'S TERMS AND CONDITIONS OF SALE FOR SUCH PRODUCTS, NATIONAL ASSUMES NO LIABILITY WHATSOEVER, AND NATIONAL DISCLAIMS ANY EXPRESS OR IMPLIED WARRANTY RELATING TO THE SALE AND/OR USE OF NATIONAL PRODUCTS INCLUDING LIABILITY OR WARRANTIES RELATING TO FITNESS FOR A PARTICULAR PURPOSE, MERCHANTABILITY, OR INFRINGEMENT OF ANY PATENT, COPYRIGHT OR OTHER INTELLECTUAL PROPERTY RIGHT.

### LIFE SUPPORT POLICY

**NATIONAL'S PRODUCTS ARE NOT AUTHORIZED FOR USE AS CRITICAL COMPONENTS IN LIFE SUPPORT DEVICES OR SYSTEMS WITHOUT THE EXPRESS PRIOR WRITTEN APPROVAL OF THE CHIEF EXECUTIVE OFFICER AND GENERAL COUNSEL OF NATIONAL SEMICONDUCTOR CORPORATION.** As used herein:

Life support devices or systems are devices which (a) are intended for surgical implant into the body, or (b) support or sustain life and whose failure to perform when properly used in accordance with instructions for use provided in the labeling can be reasonably expected to result in a significant injury to the user. A critical component is any component in a life support device or system whose failure to perform can be reasonably expected to cause the failure of the life support device or system or to affect its safety or effectiveness.

National Semiconductor and the National Semiconductor logo are registered trademarks of National Semiconductor Corporation. All other brand or product names may be trademarks or registered trademarks of their respective holders.

Copyright© 2007 National Semiconductor Corporation

For the most current product information visit us at [www.national.com](http://www.national.com)



**National Semiconductor  
Americas Customer  
Support Center**  
Email:  
[new.feedback@nsc.com](mailto:new.feedback@nsc.com)  
Tel: 1-800-272-9959

**National Semiconductor Europe  
Customer Support Center**  
Fax: +49 (0) 180-530-85-86  
Email: [europe.support@nsc.com](mailto:europe.support@nsc.com)  
Deutsch Tel: +49 (0) 69 9508 6208  
English Tel: +49 (0) 870 24 0 2171  
Français Tel: +33 (0) 1 41 91 8790

**National Semiconductor Asia  
Pacific Customer Support Center**  
Email: [ap.support@nsc.com](mailto:ap.support@nsc.com)

**National Semiconductor Japan  
Customer Support Center**  
Fax: 81-3-5639-7507  
Email: [jpn.feedback@nsc.com](mailto:jpn.feedback@nsc.com)  
Tel: 81-3-5639-7560