

NOKIA NOKIA 1100 1101

RH-18

RH-75



Transceiver Features

- Flashlight
- Alarm clock
- Phonebook with up to 50 names in internal memory
- Distribution lists and (SMS) messaging
- Date and time screensavers
- Built-in alarm and reminders
- Stopwatch and countdown timer
- Full-size animated screensavers
- Two built-in games
- Conference call *
- Internal antenna
- Automatic keyguard lock
- Keyguard lock with security code

1101 only:

WAP 1.1, WAP push

*This feature is network and subscription-dependent. Please check availability with your network operator.

Transceiver with BL-5C Li-ion 850mAh battery pack

Talk time	Standby	Note
Up to 2h-3h	Up to 300h	Depends on network parameters

SERVICE MANUAL

Service Level 1&2

Copyright © Nokia Corporation. This material, including documentation and any related computer programs, is protected by copyright controlled by Nokia Mobile Phones. All rights are reserved. Copying, including reproducing, storing, adapting or translating, any or all of this material requires the prior written consent of Nokia Mobile Phones. This material also contains confidential information, which may not be disclosed to others without the prior written consent of Nokia Mobile Phones.

TABLE OF CONTENT

	Page
1. INTRODUCTION	3
2. GENERAL REPAIR INFORMATION	4
3. PATHFINDER FOR WORKSHOP STAFF.....	5
4. EXPLODED VIEW AND COMPONENT DISPOSAL.....	6
5. SERVICE TOOLS.....	7
6. SW-UPDATE	9
7. DISASSEMBLY INSTRUCTIONS (ALSO SEE THE VIDEO CLIPS ON CARE POINT).....	10
8. DOME SHEET EXCHANGE	12
9. LEGEND FOR QUICK TROUBLE SHOOTER	13
10. QUICK TROUBLE SHOOTER PART 1	14
11. QUICK TROUBLE SHOOTER PART 2	15
12. GONOGO TEST	16
13. BATTERY TEST.....	16
14. FORWARDING OF REPAIRS TO SERVICE LEVEL 3 OR 4 SUPPLIERS.....	17
15. ESD PROTECTION REQUIREMENTS.....	18

CHANGE HISTORY

Status	Version No.	Date	Comments
Draft	0.1	21.10.2003	Initial draft
Approved	1.0	03.11.2003	approval
Approved	2.0	16.06.2005	1101 added

1. INTRODUCTION

The purpose of this document is to help Nokia service levels 1 and 2 workshop technicians to carry out service to Nokia 1100. This Service Manual is to be used **only** by authorized Nokia service partners, and the content of it is **confidential**. Please note that Nokia provides also other guidance documents (e.g. Service Bulletins) for service partners, follow these regularly and comply with the given instructions.

While every endeavor has been made to ensure the accuracy of this document, some errors may exist. If you find any errors or if you have further suggestions, please notify Nokia using the address below:
<mailto:cc-ts-rc.documentation@nokia.com>

Please keep in mind also that this documentation is continuously being updated and modified, so watch always out for the newest version.

Warnings and Cautions

Please refer to the phone's user guide for instructions relating to operation, care and maintenance including important safety information. Note also the following:

Warnings:

1. CARE MUST BE TAKEN ON INSTALLATION IN VEHICLES FITTED WITH ELECTRONIC ENGINE MANAGEMENT SYSTEMS AND ANTI-SKID BRAKING SYSTEMS. UNDER CERTAIN FAULT CONDITIONS, EMITTED RF ENERGY CAN AFFECT THEIR OPERATION. IF NECESSARY, CONSULT THE VEHICLE DEALER/MANUFACTURER TO DETERMINE THE IMMUNITY OF VEHICLE ELECTRONIC SYSTEMS TO RF ENERGY.
2. THE HANDPORTABLE TELEPHONE MUST NOT BE OPERATED IN AREAS LIKELY TO CONTAIN POTENTIALLY EXPLOSIVE ATMOSPHERES EG PETROL STATIONS (SERVICE STATIONS), BLASTING AREAS ETC.
3. OPERATION OF ANY RADIO TRANSMITTING EQUIPMENT, INCLUDING CELLULAR TELEPHONES, MAY INTERFERE WITH THE FUNCTIONALITY OF INADEQUATELY PROTECTED MEDICAL DEVICES. CONSULT A PHYSICIAN OR THE MANUFACTURER OF THE MEDICAL DEVICE IF YOU HAVE ANY QUESTIONS. OTHER ELECTRONIC EQUIPMENT MAY ALSO BE SUBJECT TO INTERFERENCE.

Cautions:

1. Servicing and alignment must be undertaken by qualified personnel only.
2. Ensure all work is carried out at an anti-static workstation and that an anti-static wrist strap is worn.
3. Ensure solder, wire, or foreign matter does not enter the telephone as damage may result.
4. Use only approved components as specified in the parts list.
5. Ensure all components, modules screws and insulators are correctly re-fitted after servicing and alignment. Ensure all cables and wires are repositioned correctly.
6. All PC's used with NMP Service Software for this produce must be bios and operating system "Year 2000 Compliant".



Electrostatic discharge can easily damage the sensitive components of electronic products. Therefore every Service Supplier has to take care of all precautions, which are mentioned in the service level related "Service Partner Requirements", available on Nokia Partner Web Site/NOL. Also see ESD Protection Requirements in this Service Manual.

2. GENERAL REPAIR INFORMATION

IN THIS SECTION THE TECHNICIAN WILL GET SOME GENERAL HINTS HOW TO CARRY OUT REPAIRS:

- To familiarize oneself with Nokia 1100 read the tutorials or user guide on www.nokia.com -->Support--> Phones, by selecting the Phone Model.
- Before starting the repair you must take care of ESD precautions like being in your ESD Protected Area and connecting your wristband.
- Use gloves to avoid corrosion and fingerprints.
- Protect windows and displays with a film to avoid dust and scratches.
- When cleaning the pads you have to use a soft cloth/ESD brush and Isopropanol. It is not allowed to use a glass fiber pencil because it scratches the surface and will lead later on to corrosion.
- Mechanical parts (except shielding lids), which didn't repair the failure, can be reused, if they are not soldered.
- When removing the shielding lids make sure to replace them with new ones, otherwise the high-frequency leakage can have an influence on the device.
- Use always original Nokia spare parts.
- Check the soldering joints of the parts which are concerned regarding the indicated error (e.g. soldered connectors or switches) and resolder them if necessary (Level 2 only).
- Remove redundant soldering flux after repair.
- Meet the torque requirements when assembling the unit (see also the document "torques for transceiver assembly" on Nokia Partner Web Site).
- Always use your own equipment for testing where you are sure that it works. E.g. if the customer complains about charger function, please test the phone with your own charger to be sure if phone or charger causes the malfunction.
- When doing the Faultlogger entries, always note the Item code, which caused the malfunction. Also, fill in the appropriate part code from the assembly, if needed.
- Please be aware that some malfunctions could be software related and solved by an update.

Please check Nokia Partner Web Site (PWS) or Nokia Online (NOL) for latest news and files on a regular basis.

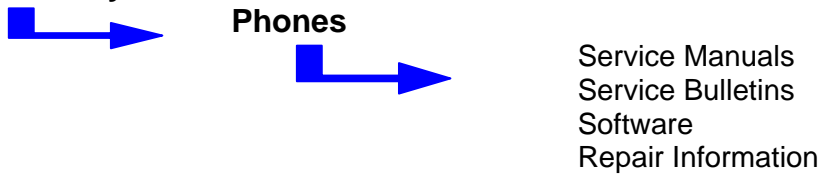
3. PATHFINDER FOR WORKSHOP STAFF

In addition to the information in this Service Manual, there are several instructions and information, which have to be followed. Main documentation database is [Nokia Online](#) with the purpose of serving different multimedia contents, like video clips or interactive tutorials.

It is mandatory to watch for newest technical and organizational information on a daily basis to be updated as required (see **“Latest files in Support Library”**). Every new information has to be processed and implemented as soon as possible.

When logged into NOL you can also find needed information in different folder like:

Support Library



Level 1&2 e-learning (former Nokia CarePoint) on Nokia Online

Former Nokia CarePoint content, such as	<ul style="list-style-type: none"> • Online Troubleshooting • Product information • Videos – Disassembly/Assembly 	can be found on Nokia Online
		<p>Nokia Online</p> <p>↓</p> <p>Care Services</p> <p>↓</p> <p>Training</p> <p>↓</p> <p>Phone Models</p>

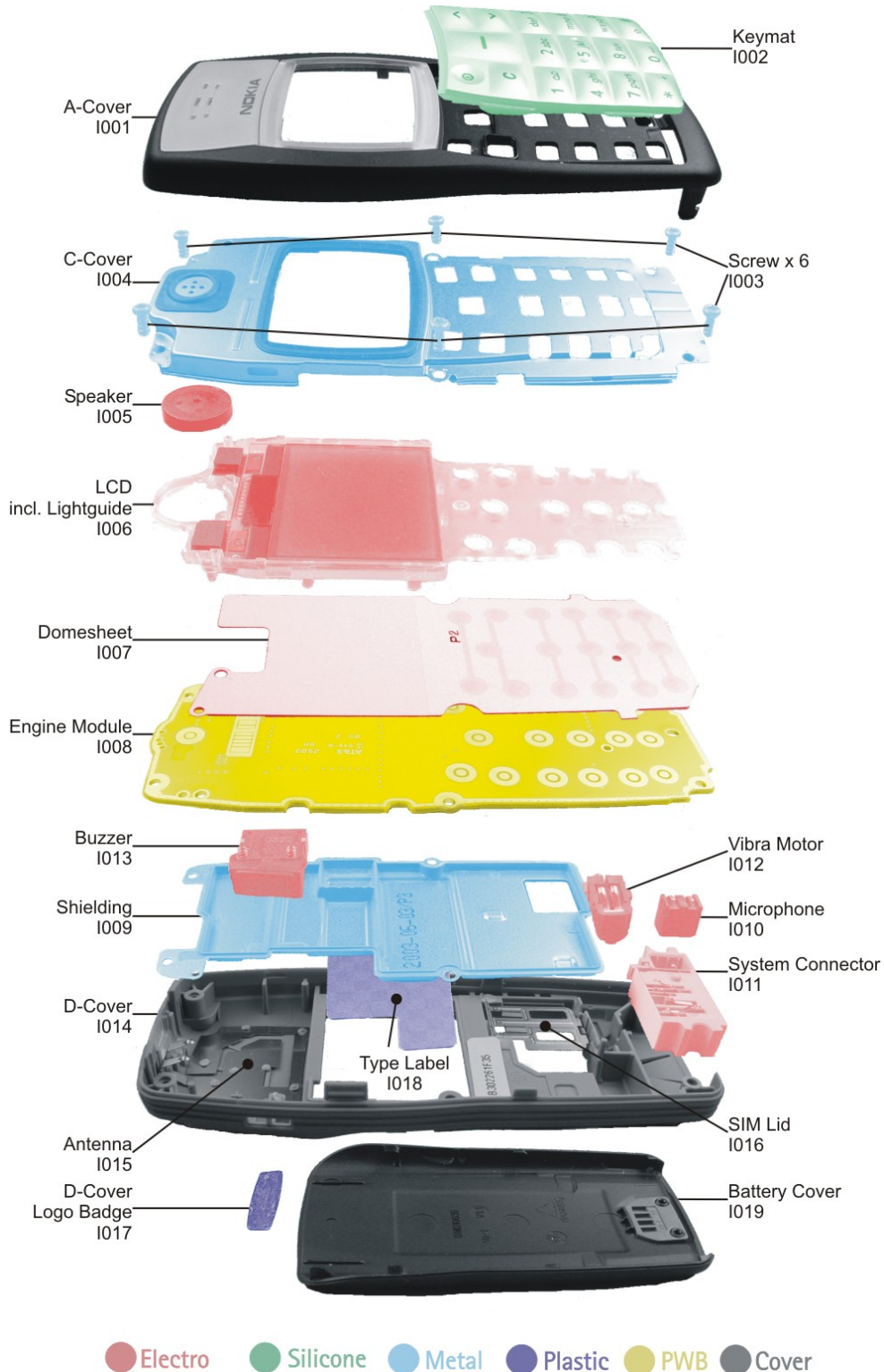
Level 1&2 e-learning courses offer a quick overview of the Nokia phone and support for how to repair and use the phone:

<p>Overview & Guides Basic information about the phone, features and technologies</p>	<p>Disassembly & Assembly Instructions how to disassemble and assemble the phone</p>	<p>Troubleshooting Step-by-step instructions on how to locate and repair the most common problems with the phone</p>
--	---	---

To reduce the server traffic it is recommended to download newest version of huge files like videos, Phoenix packages or Service Manuals only once and distribute it internally for further use.








4. EXPLODED VIEW AND COMPONENT DISPOSAL

Recommendation for the ecologically friendly disposal of components. Colorized components show the different categories.



Description: See corresponding ITEM/CIRCUIT REF of the SPL (Spare Parts List)

5. SERVICE TOOLS

	<p>ACF-8 Universal Power Supply is used to power FLS-4S.</p> <p>FLS-4S incl. Driver and User Guide is a dongle and flash device incorporated into one package, developed specifically for POS use.</p>
	<p>XCS-1 Service Cable is used to connect FLS-4S to SF-10.</p>
	<p>Internal Battery BL-5C Inserted under the back cover, this Li-ion battery provides power in a lightweight package.</p>
	<p>Travel Charger ACP-8E/ACP-8X Lightweight multi-voltage charger for charging your phone battery.</p>
	<p>Headset HDC-5 An easy and convenient handsfree solution with remote control.</p>
	<p>SF-10 POS Flash Adapter is used in POS (Point of Sales) environment for software updating. It provides controlled supply voltage and necessary connections between the phone and the Flash Device. It substitutes for the phone's standard battery during the software update.</p>
	<p>RJ-12 Soldering Jig (for Level 2 or higher service level supplier)</p>



Test pins
for POS Flash Adapter SF-10

NMP code 0772040



Content

- Nokia opening tool SRT-6 Nokia No. 0770431
- Tonichi torque driver Nokia No. 6901525
- [Hoya](#) micro fibre cloth MX304
- [Dastex](#) gloves S, M, XL
- [Artlux](#) goggles AH166
- [Wera](#) bit T5 867/4TX 5x50
- Wera bit T6 867/4TX 6x50
- Wera bit T6 PLUS® 867/4TX 6IP
- [Facom](#) side cutter 416E
- Facom T5 driver SP.14032
- Facom T6 driver SP.14033
- Facom slot screwdriver AEF. 2x35.E
- [Wetec](#) tweezers 7abb SA-ESD
- Wetec tweezers 22 SA-ESD
- Wetec tweezers 13 SA-SMD ESD
- Wetec tweezers PSF SA-ESD
- Wetec ESD brush E1211
- [Kaiser Fototechnik](#) airbrush 6315
- Wetec dental tool DEM83266/0
- [RS Components](#) Scissors 323-5732

6. SW-UPDATE

To use FLS-4S Flash Dongle you have to follow the user guide inside the sales package. Please check always the latest version of flash software, which is available on Nokia Partner Web Site

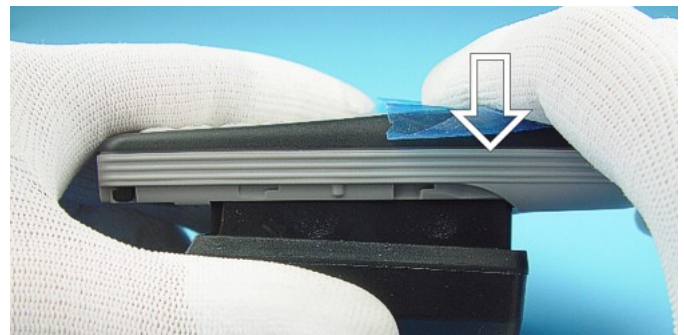
Flash Concept - (Point of Sales)



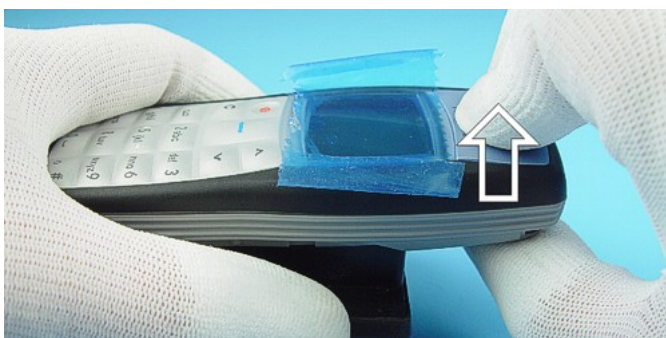
It is very important to follow this insertion and removal procedure otherwise the contact pins of Flash Adapter will be damaged.



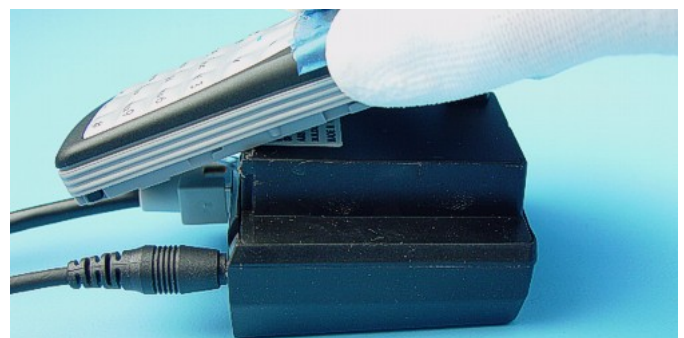
Note: the Battery Connector in comparison with other products is located on the bottom side of the phone. Before starting the flash process, be sure that SIM Lid is closed. Insert the Flash Adapter SF-10 like a battery, start at the Battery Connector side.



Now, push down the top side of the Phone, do not use too much force.



When removing the Flash Adapter always start from the top side.



Now, take away the unit.

7. DISASSEMBLY INSTRUCTIONS (ALSO SEE THE VIDEO CLIPS ON CARE POINT)



If not already done protect Window with a film to avoid dust and scratches.



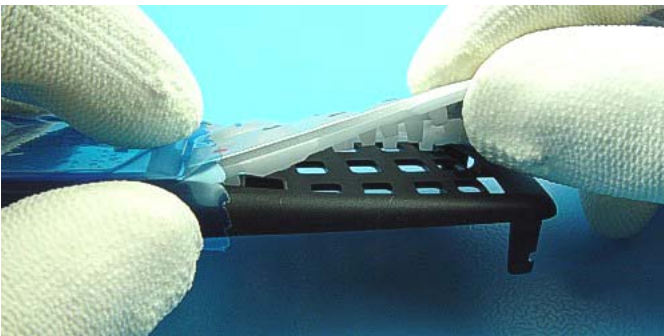
Press the Release Button before removing the Battery Cover.



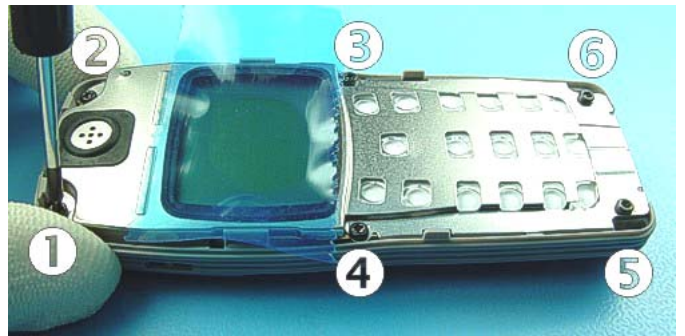
Open A-Cover from bottom side on.



Use SRT-6 to unlock Keymat from A-Cover.



Now, Keymat can be taken away easily.



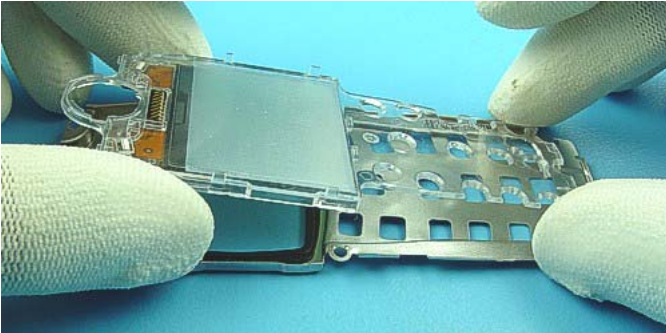
Unscrew the six Torx Plus® size 6 screws. **For assembly, the reverse order and a Torx Plus® driver with a torque of 21Ncm have to be used.**



Take C-Cover from Engine Module.



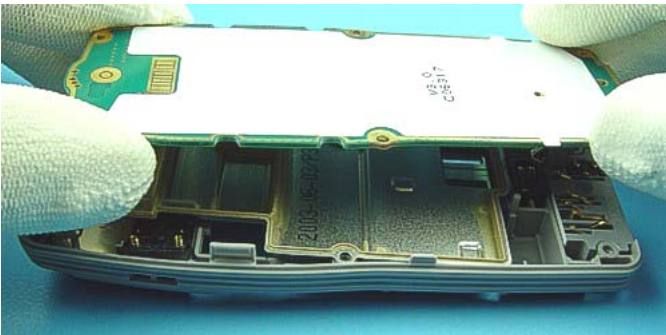
Unlock LCD snaps on both sides of the display.



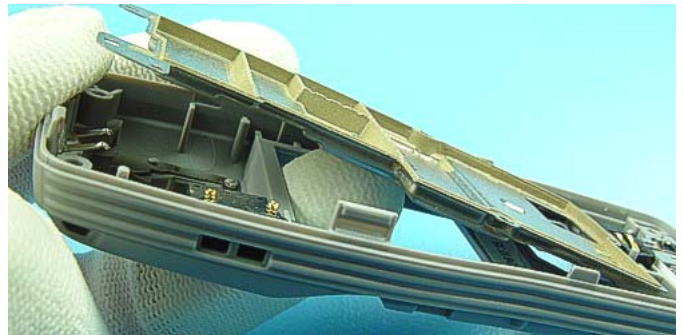
Remove LCD inclusive Lightguide.



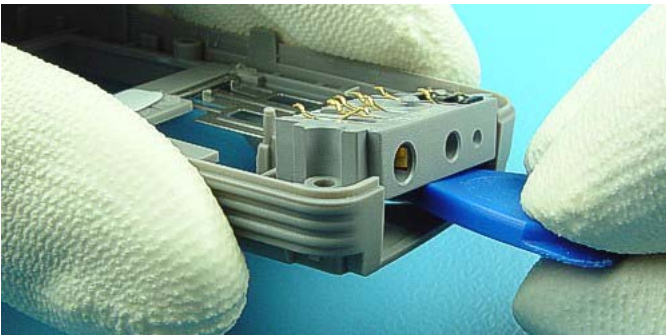
Use tweezers when removing the Speaker.



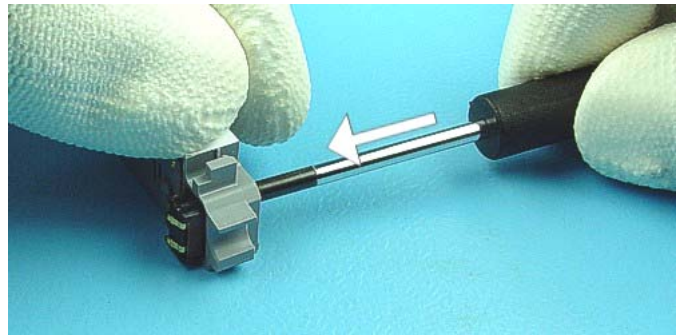
Take Engine Module from D-Cover.



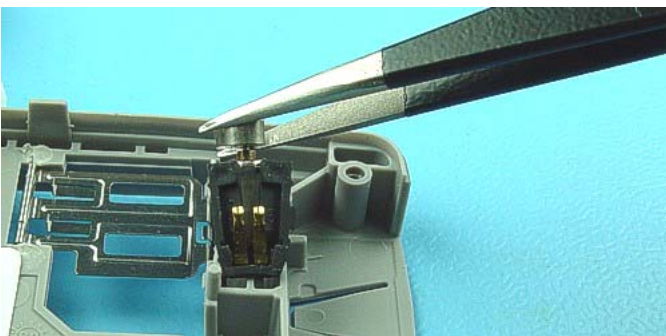
Lever out Shielding, beginning from the top side of the unit.



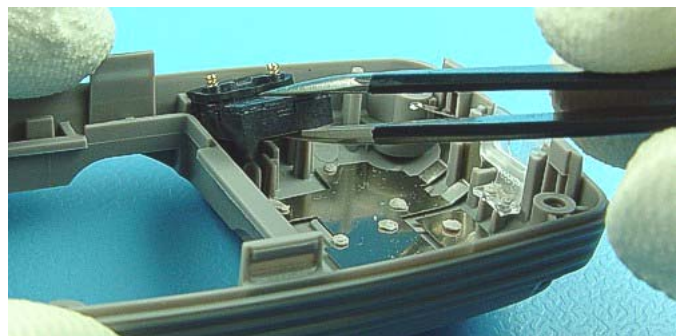
If System Connector is tight in the D-Cover, SRT-6 should be used to loosen it.



Carefully push out Microphone from System Connector. Moderate force is required for this action.

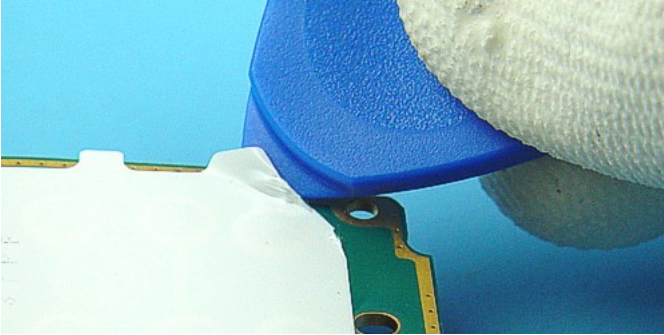


Lever out Vibra Motor with tweezers.

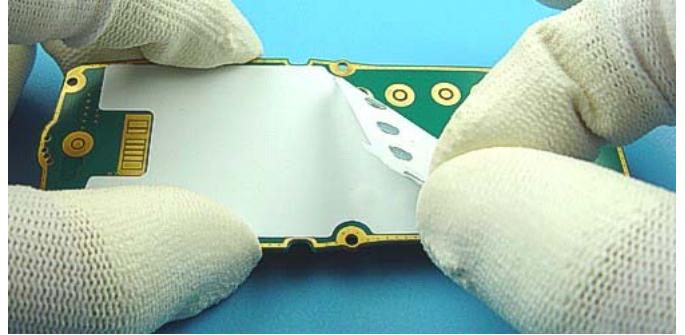


Remove Buzzer from its guidance. Do not damage the spring contacts.

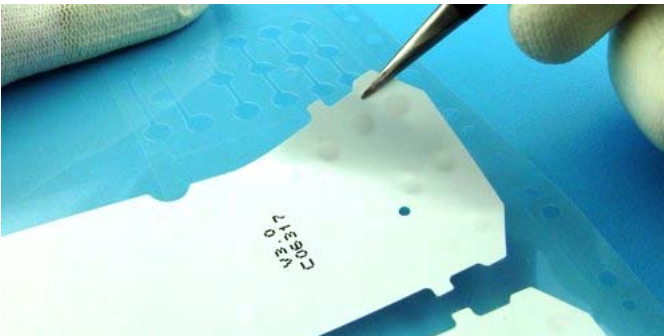
8. DOME SHEET EXCHANGE



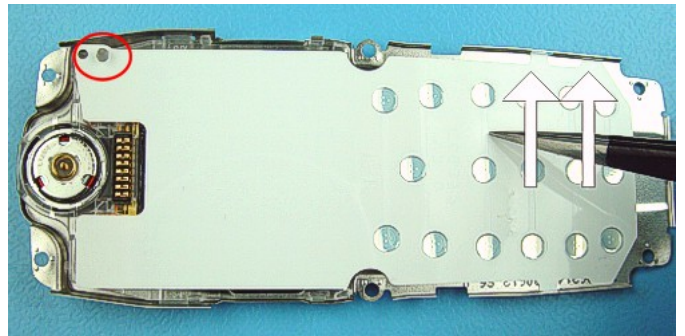
Use SRT-6 to loosen one corner of the Dome Sheet.



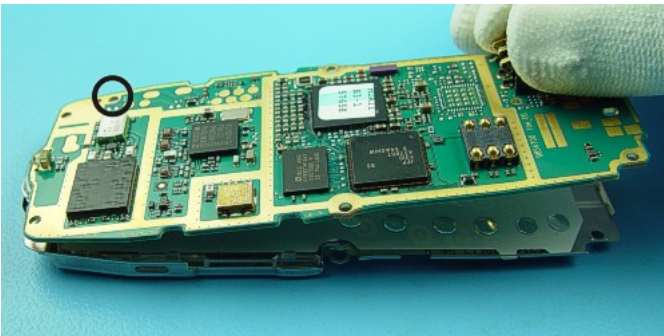
Tear off Dome Sheet in diagonal direction to avoid remains of glue. Check pads for cleanliness.



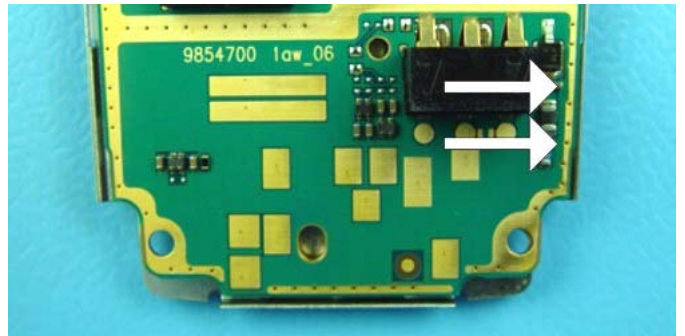
Take a new Dome Sheet from carrier film. Do not touch the keydomes from adhesive side.



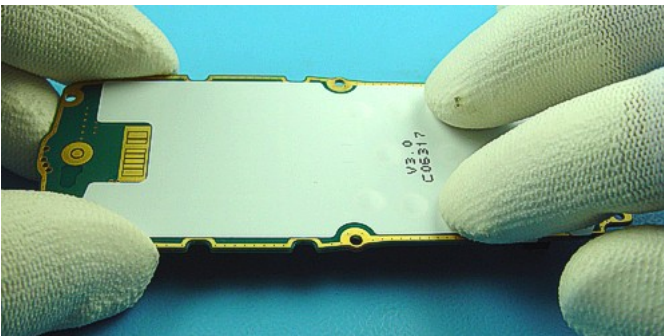
Use the guiding pin and the C-Cover's edge as reference point.



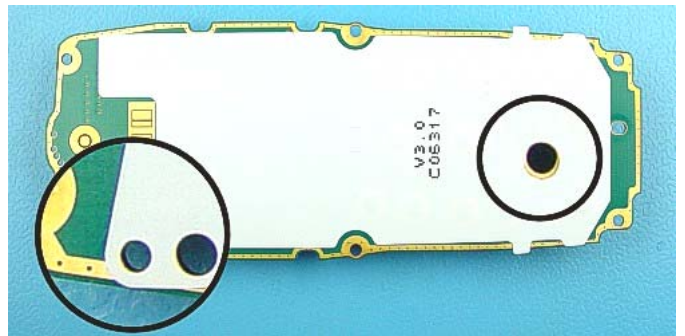
Carefully place Engine Module from topside on. Note the guiding pin.



Before sinking the Engine Module, make sure that it is also close to the same side of the shielding.



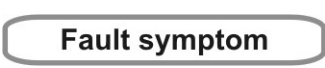


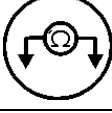


Carefully press-on the Dome sheet to the Engine Module to avoid bubbles.



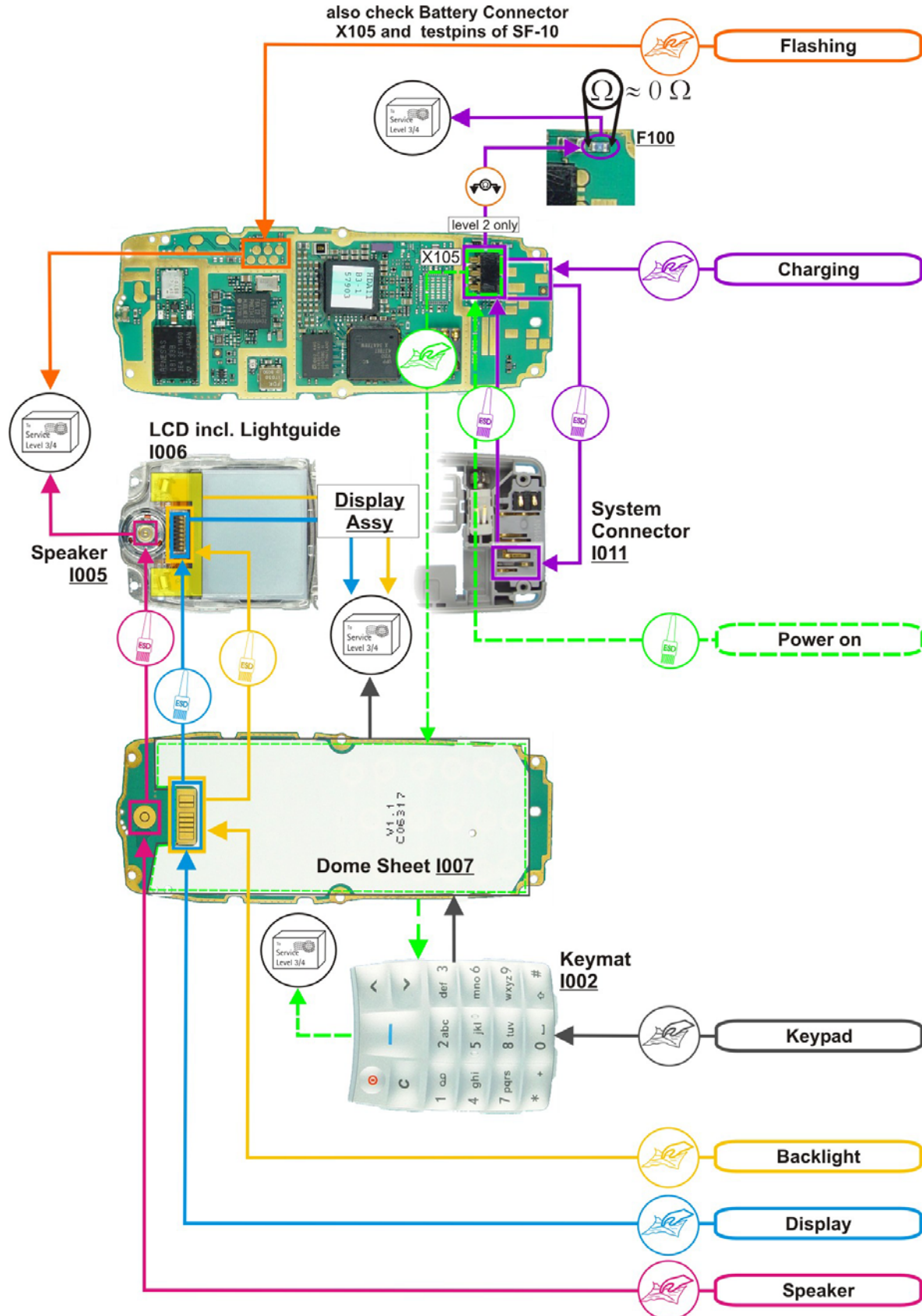
Finally check, if the holes of the Dome Sheet match exactly to the ones in the Engine Module. Otherwise change Dome Sheet again! Check Keyboard functionality.

9. LEGEND FOR QUICK TROUBLE SHOOTER

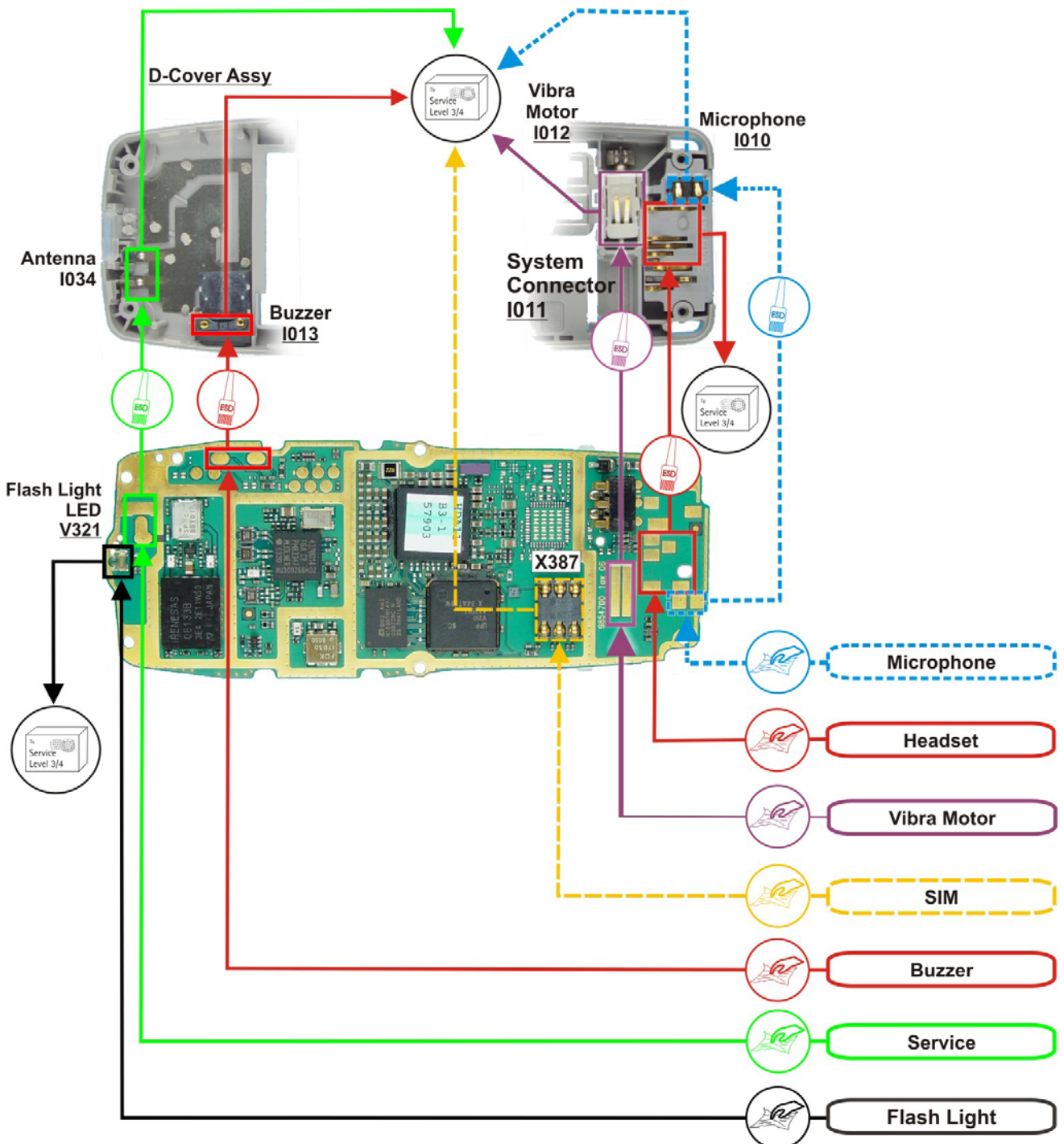
This legend is valid for all parts of the **Quick Trouble Shooter**

<p>Follow the steps until the problem is solved. If this doesn't help, you are not authorized to go forward. Only underlined components (e.g. <u>IO02</u>) can be changed.</p>	
	<p>The start point of repair activities regarding the appeared fault symptoms.</p>
	<p>Follow the arrows step by step</p>
	<p>Pads or contacts: Check optical and mechanical condition particularly regarding to corrosion. Clean if necessary.</p>
	<p>Measure component for electrical functionality and change, if needed. (Level 2 only)</p>
	<p>Pads or contacts: Check optical and mechanical condition particularly regarding to corrosion. Clean with ESD brush only, if necessary.</p>
	<p>No more actions possible send product to the appropriate service partner with higher service level.</p>

10. QUICK TROUBLE SHOOTER PART 1



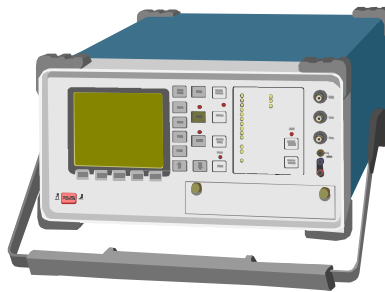
11. QUICK TROUBLE SHOOTER PART 2



12.GONOGO TEST

After the optical check a GoNoGo test has to be carried out if the unit has been unscrewed to guarantee the functionality of the phone.

Please refer to the actual information on Partner Web Site and Nokia Care Point. When using delivered tester files, take care of the right setup according to the tester type and product type. Please refer to “Recommended Service Equipment” on Nokia Partner Web Site.



Mobile Phone Tester

13.BATTERY TEST

A battery tester lets you test the capacity of Nokia batteries.

Please refer to the actual information on Partner Web Site.



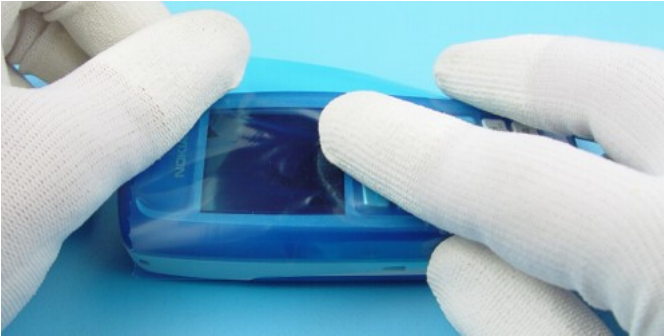
<http://www.astratec.co.uk/>



<http://www.cadex.com/>

14. FORWARDING OF REPAIRS TO SERVICE LEVEL 3 OR 4 SUPPLIERS

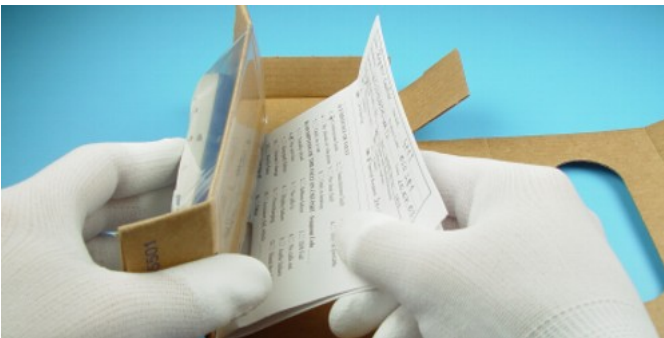
We recommend using the offered swap phone cartons.



Always Protect the window with a protection film.



Put the unit under the stretch film.



Add repair documentation e.g. filled-in service note into the swap carton.



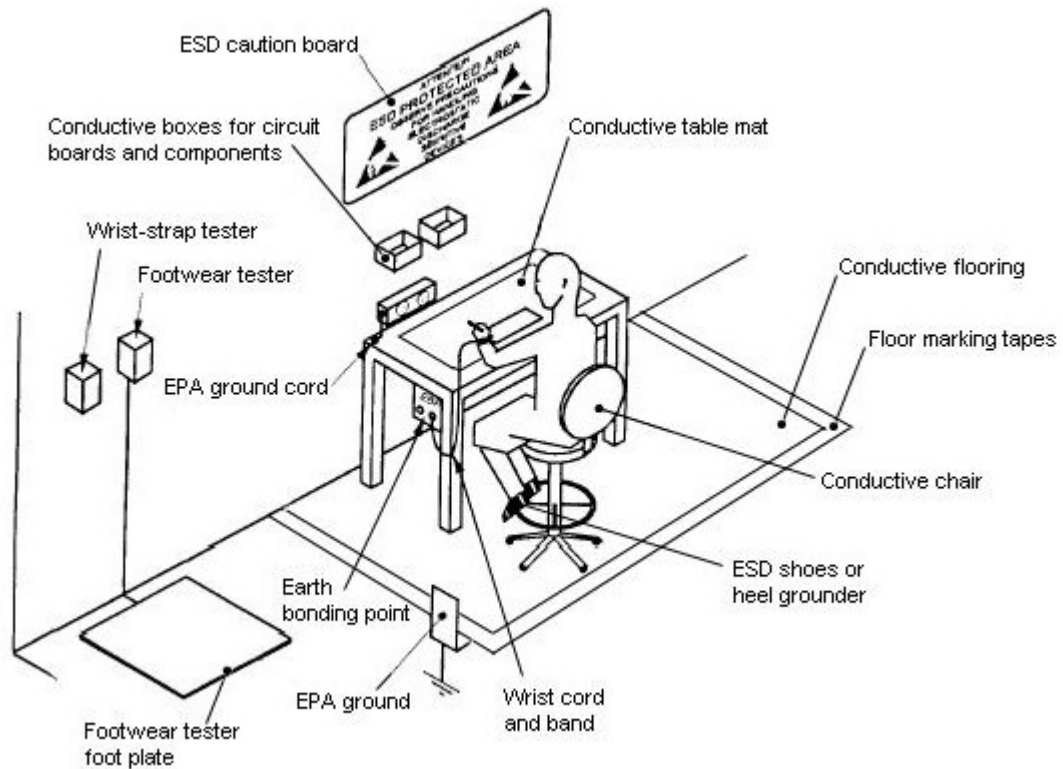
Fold the swap carton as shown in Spare Parts SB-004.



There are two different sizes of swap cartons for common mobile phones.

15.ESD PROTECTION REQUIREMENTS

Please refer to the Partner Web Site document [Service Partner Requirements](#) in folder General instructions.



- | | |
|---|--|
| USE Conductive bags and boxes | NO Smoking |
| USE ESD compatible service tools | NO Drinking |
| USE Conductive wastebaskets | NO Eating |
| USE ESD gloves when handling PWBs/PCBs | NO Dust |
| USE Cleaning material without changing el. Characteristics | NO Useless Items |
| USE Grounded service equipment, i.e. soldering station | NO Normal pressured air for cleaning modules/displays |
| USE ESD clothes such as coat or frock | |



The video covers general issues concerning Electro-Static Discharge (ESD) source: Nokia Care Point